



# June 2005 SECAA Program Report

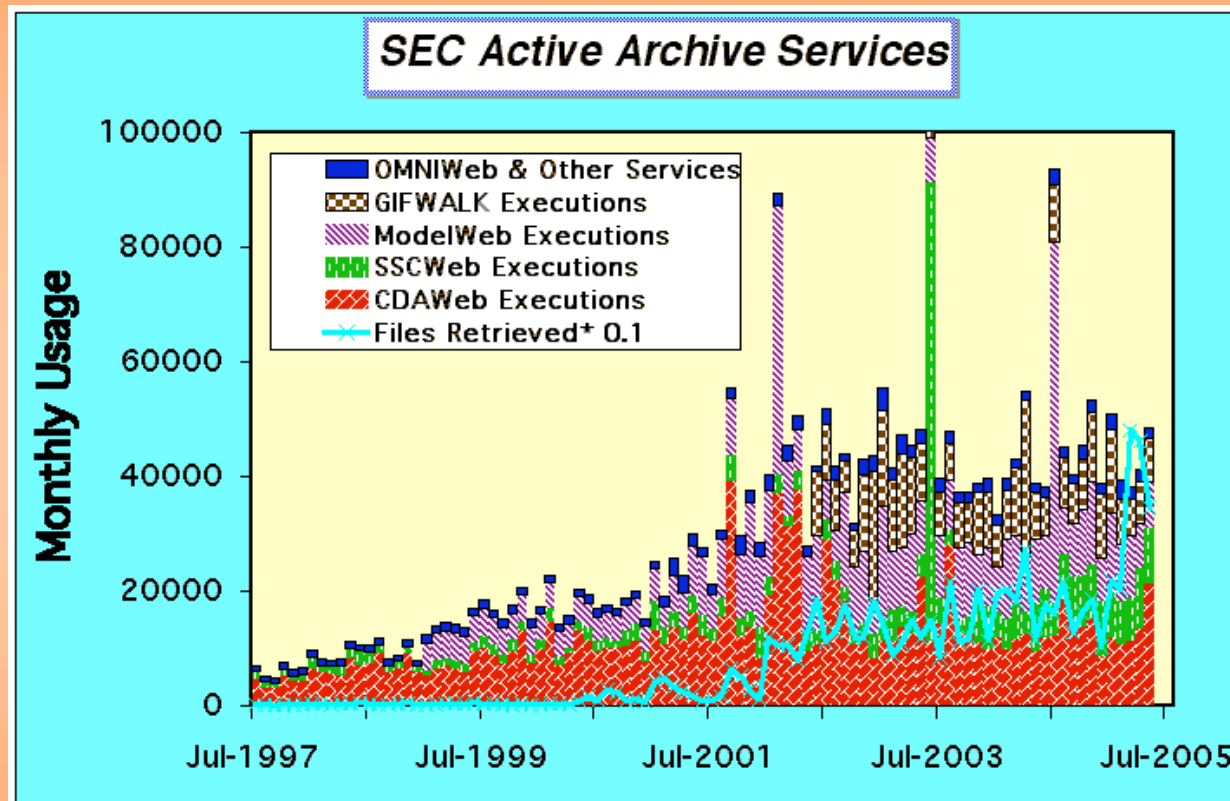
*R.E. McGuire*  
*Space Physics Data Facility / NASA Goddard*

- **Status, Metrics and Highlights**
- **Work In-Progress and Planned**
- **Budget Overview**



# Status and Metrics

- Current SECAA data services are operating continuously and without significant problems

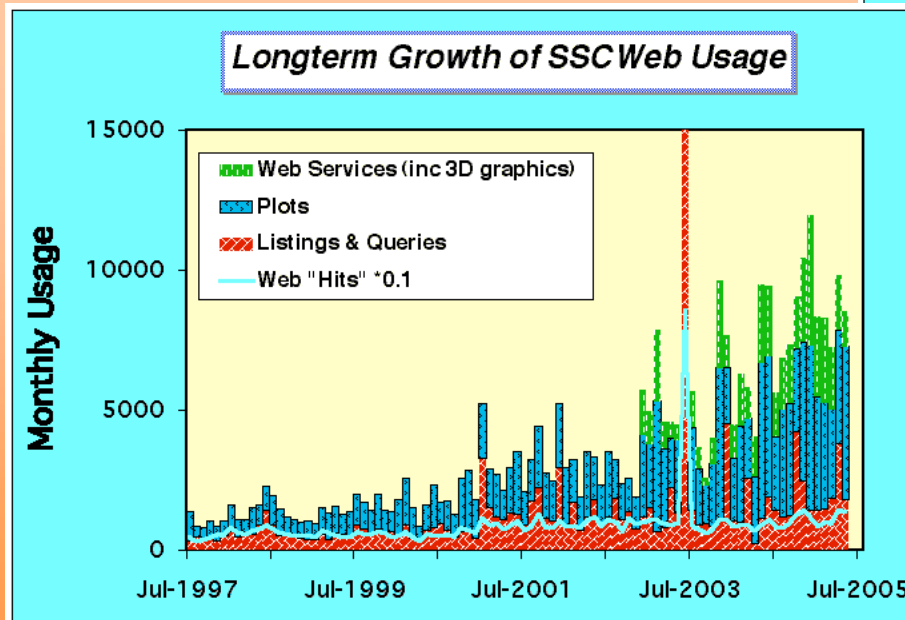
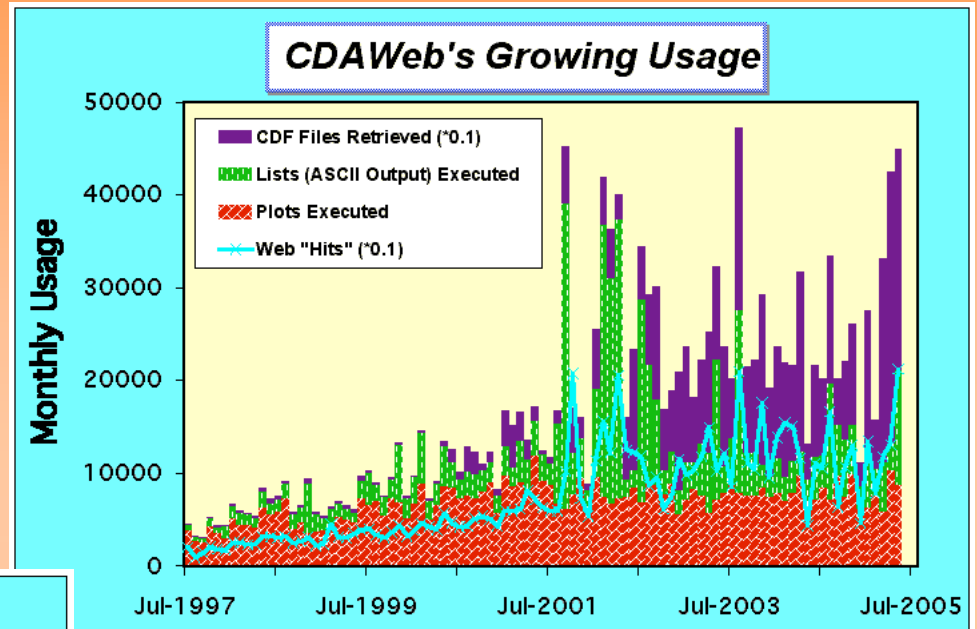


- Figure shows growing combined usage of full range of services
  - GIFWALK is a joint effort of SECAA, NSSDC and the PWG project
    - > GIFWALK statistics available only from June 2002
    - > Many file retrievals earlier than ~July 2001 not fully captured



# Status and Metrics (cont)

- **CDAWeb use by function**
  - Note: ~56 space physics instruments now have reasonably current data served from CDAWeb



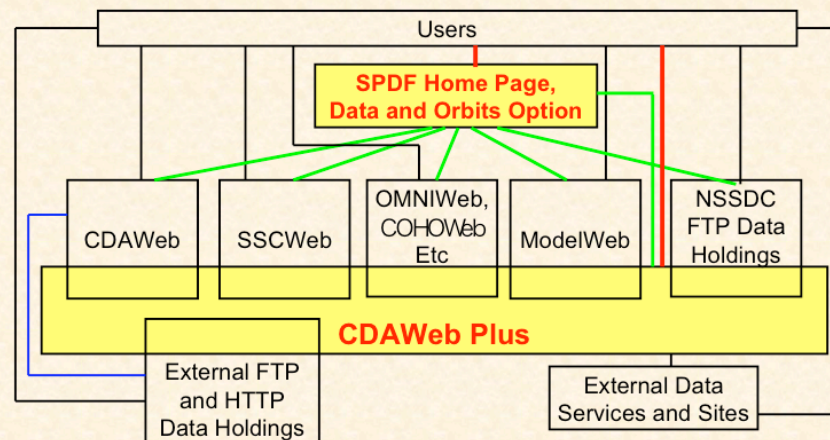
- **SSCWeb use by function**
  - Note: current orbit data for 33 missions are maintained and served by SSCWeb



# Highlight: Expanded User Interfaces

## Architecture for User Access to SPDF Services

- 3 primary paths for users
  - Direct links to all individual services
  - Service/data finding and links via SPDF home page
  - Integrated service/data access via CDAWeb Plus
- CDAWeb Plus presents detailed resources as if common set of CDAWeb-like datasets
  - File retrieval from SPDF, NSSDC, external sites
  - Graphics from CDAWeb and SSCWeb
  - Links to information and external data/services



- **Note: in addition to the direct interactive user interfaces shown, these services are increasingly available to external clients and applications via webservices APIs**



# Highlight: Redesigned SPDF/SECAA website is now live

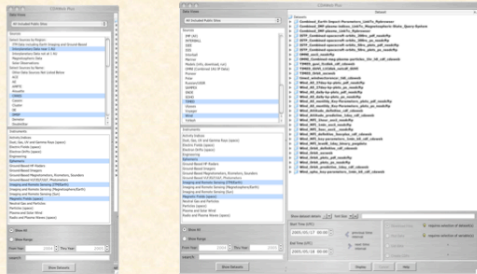
- NASA Look and Feel
- Shows full range of SECAA activities
  - Data & Orbits: services vs. data source



# Highlight: Beta Release of CDAWeb Plus Now Public

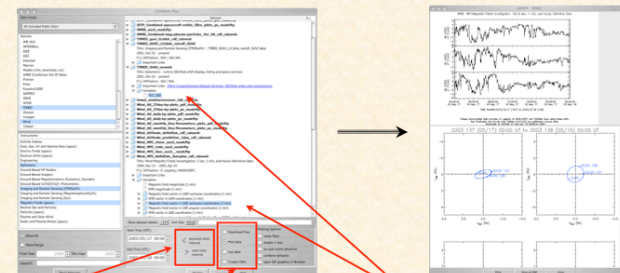
## CDAWeb Plus: Multiple Sources

- Dataset selection by
  - Region(s)
  - Name(s)
  - Instrument Type(s)
  - Year(s)
  - Search string
- “OR” within each
- View and select together, all sources at the same time



L13

## Graphics Etc from CDAWeb and SSCWeb via Webservices

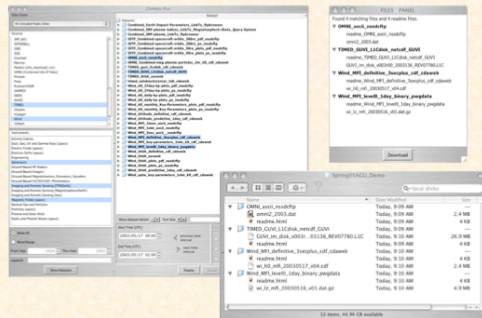


- Previous/Next times
- Plot etc options only if “variables” selected

L14

## File Download in Parallel from Multiple, Distributed Sites

- “Readme’s” built from assigned links
- Files are downloaded in folders by dataset



L15

- Note: These figures are from two Spring 2005 AGU papers on SECAA services and their technical implementation**



# Work In-Progress

---

- **SECAA's 1st priority to maintain service levels and existing data flows**
  - Significant ongoing monitoring, maintenance, and QC of data, s/w and products
- **Replacing CDAWeb's Hardware**
  - CPU : New server now in-house; System configuration and testing has begun
  - Disk: New RAID array has been ordered, with an expected delivery date in July
  - Backups: system has been identified (based on newest LTO-3 tape technology)
  - > ...
- **Continuing refinements to CDAWeb Plus interface and supporting metadata**
  - Combination of known work or issues that remained in opening the new interface for user beta access, plus an anticipated need for some work as user comments are received
- **Sample new and updated data sets in progress**
  - Final testing on several Polar and other datasets
  - First data from TIMED SABER for CDAWeb
  - Updated Geotail MGF data
- **Science Advisory Group**
  - Goal of a Fall 2005 meeting