

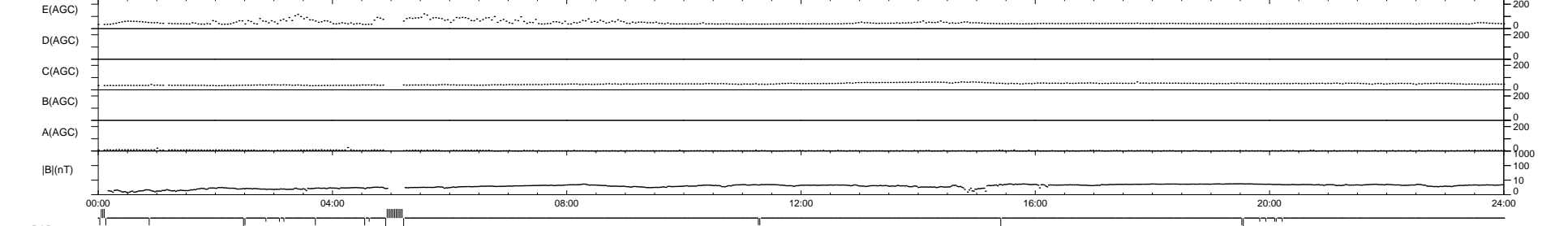
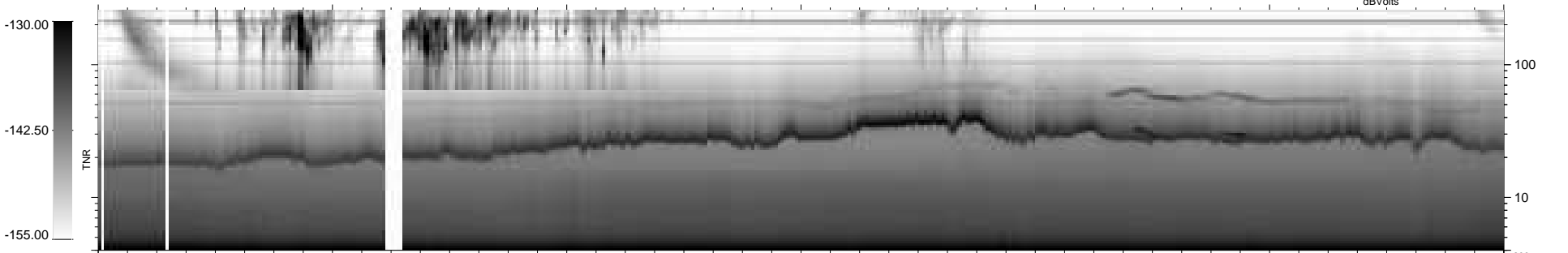
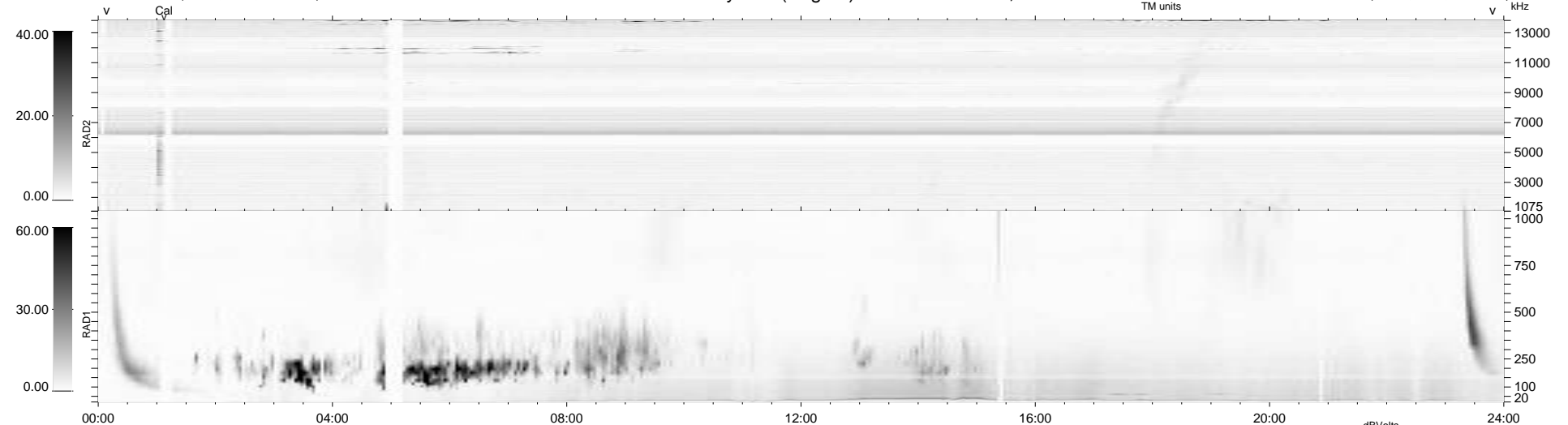
23 bad + 903 good MF/940MF projected (96%) - 14 missing MFs
 Avg interval = 180 secs
 Re = 218.29 (201.53, 83.73, -4.82 GSE)

windlib 2.0b

LZ version = v01

WIND/WAVES Summary Plot (Page 1) for 26-NOV-2021, DOY = 330

DAILY 2021-11-27 17:20:05
 Re = 219.76 (202.32, 85.69, -4.44 GSE)



RAD2
 Antenna Ey
 Mode LIN(1)
 SUM/SEP SEP
 Toggle OFF
 RAD1
 Antenna Ex
 Mode LIS(2,4)
 SUM/SEP SUM
 Toggle OFF
 TNR
 Antenna ExEy
 Mode A-32
 Sweep ACE