

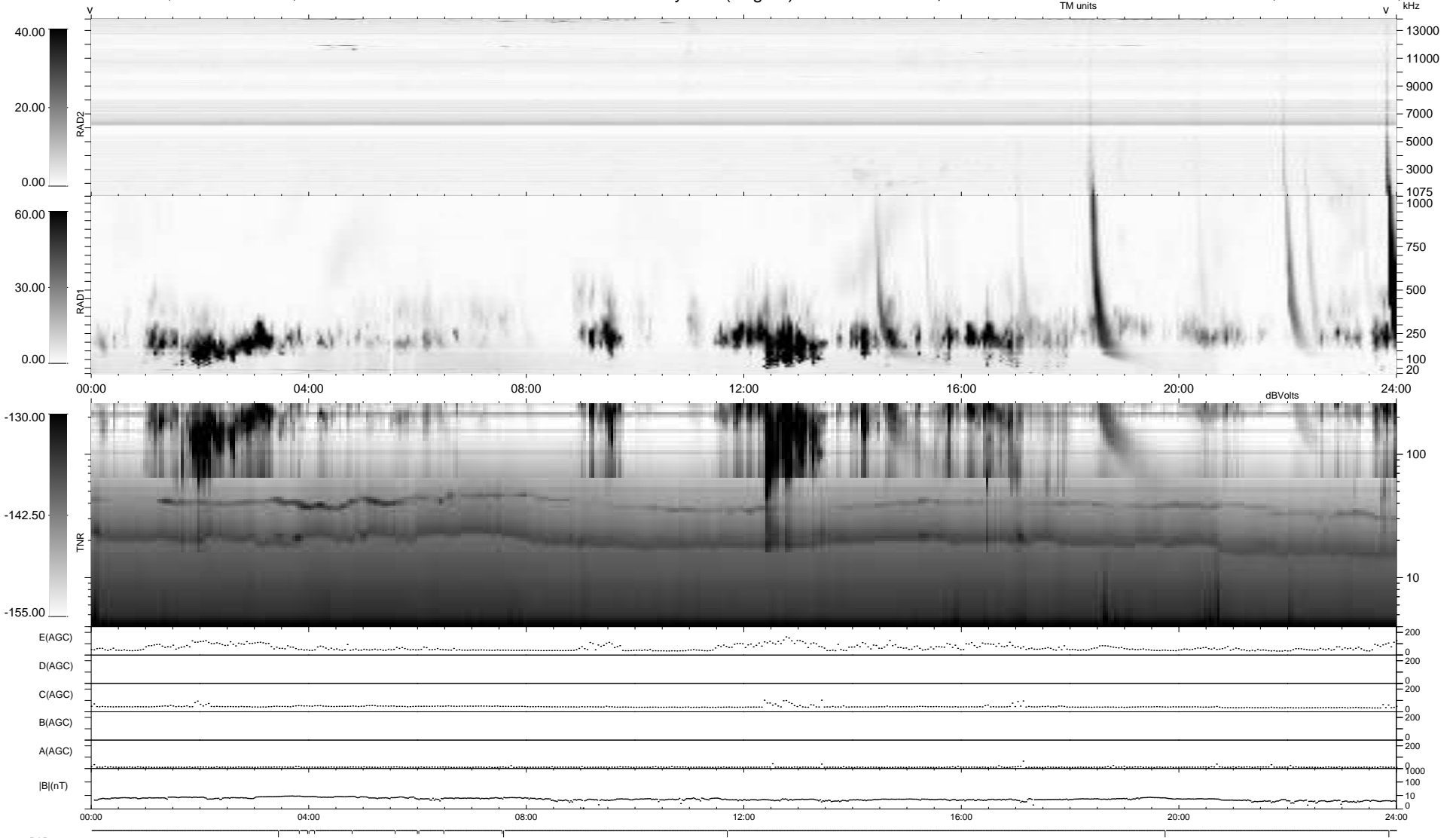
15 bad + 924 good MF/939MF projected (98%) - 0 missing MFs
 Avg interval = 180 secs
 Re = 211.25 (198.35, 72.40, -6.71 GSE)

windlib 2.0b

LZ version = v01

WIND/WAVES Summary Plot (Page 1) for 21-NOV-2021, DOY = 325

DAILY 2021-11-22 11:20:05
 Re = 212.57 (198.86, 74.83, -6.35 GSE)



RAD2
 Antenna Ey
 Mode LIN(1)
 SUM/SEP SEP
 Toggle OFF
 RAD1
 Antenna Ex
 Mode LIS(2,4)
 SUM/SEP SUM
 Toggle OFF
 TNR
 Antenna ExEy
 Mode A-32
 Sweep ACE