

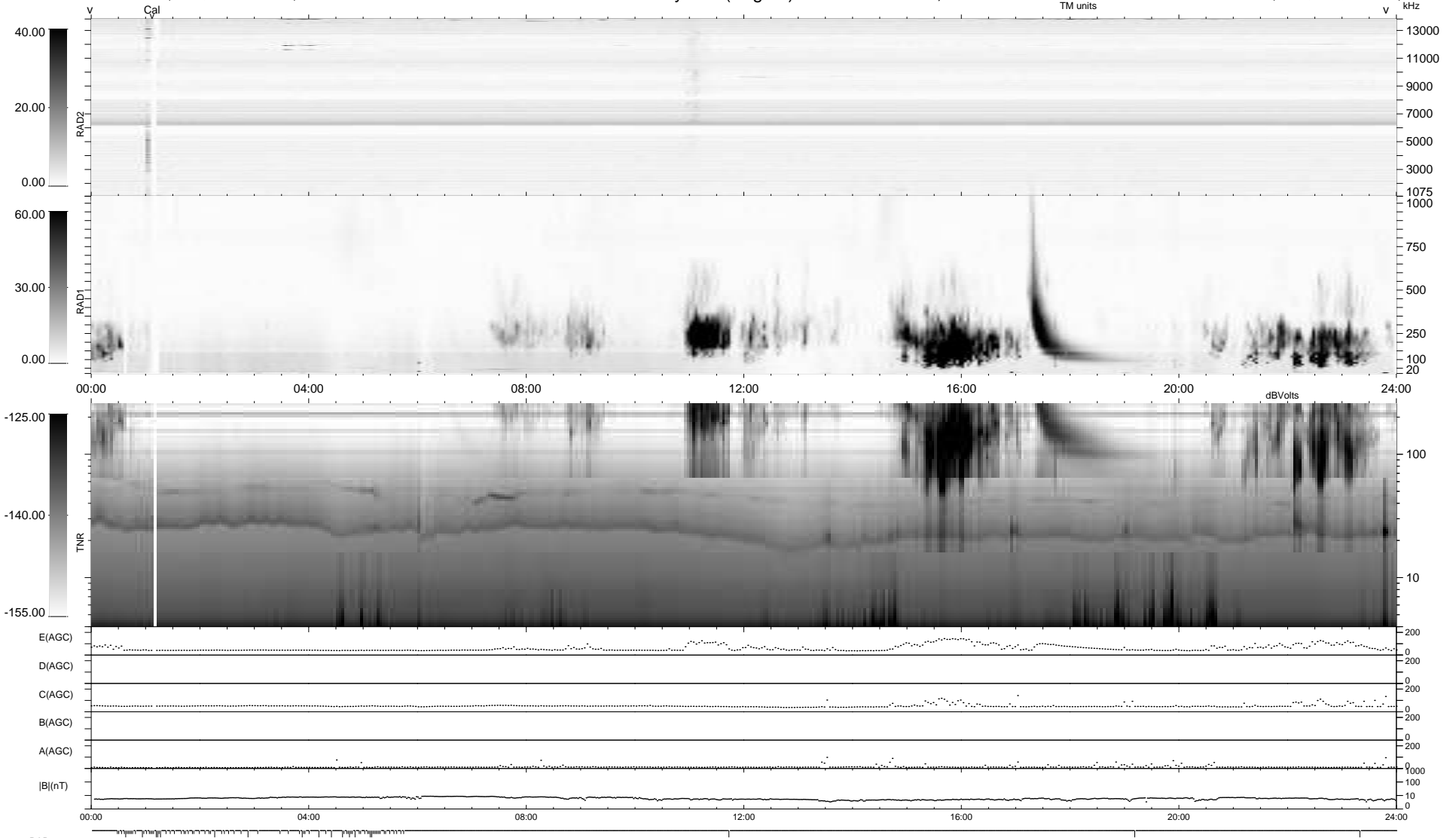
84 bad + 855 good MF/939MF projected (91%) - 0 missing MFs
 Avg interval = 180 secs
 Re = 209.98 (197.89, 69.85, -7.06 GSE)

windlib 2.0b

LZ version = v01

WIND/WAVES Summary Plot (Page 1) for 20-NOV-2021, DOY = 324

DAILY 2021-11-21 17:20:04
 Re = 211.24 (198.34, 72.38, -6.71 GSE)



```

RAD2
Antenna  Ey
Mode     LIN(1)
SUM/SEP  SEP
Toggle   OFF

RAD1
Antenna  Ex
Mode     LIS(2,4)
SUM/SEP  SUM
Toggle   OFF

TNR
Antenna  ExEy
Mode     A-32
Sweep    ACE
  
```