

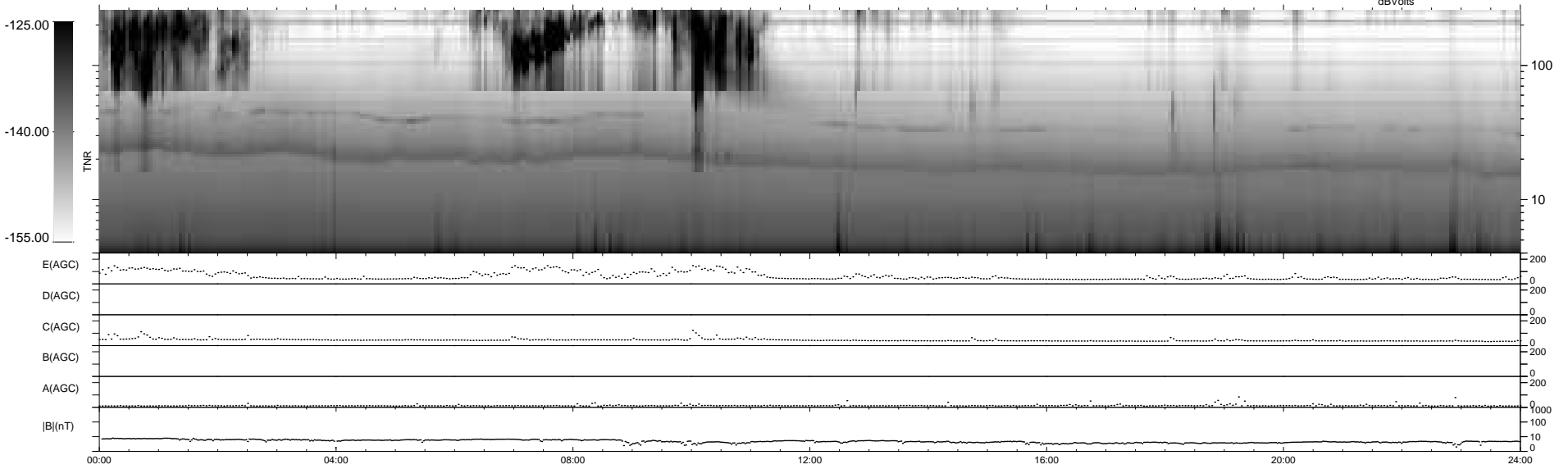
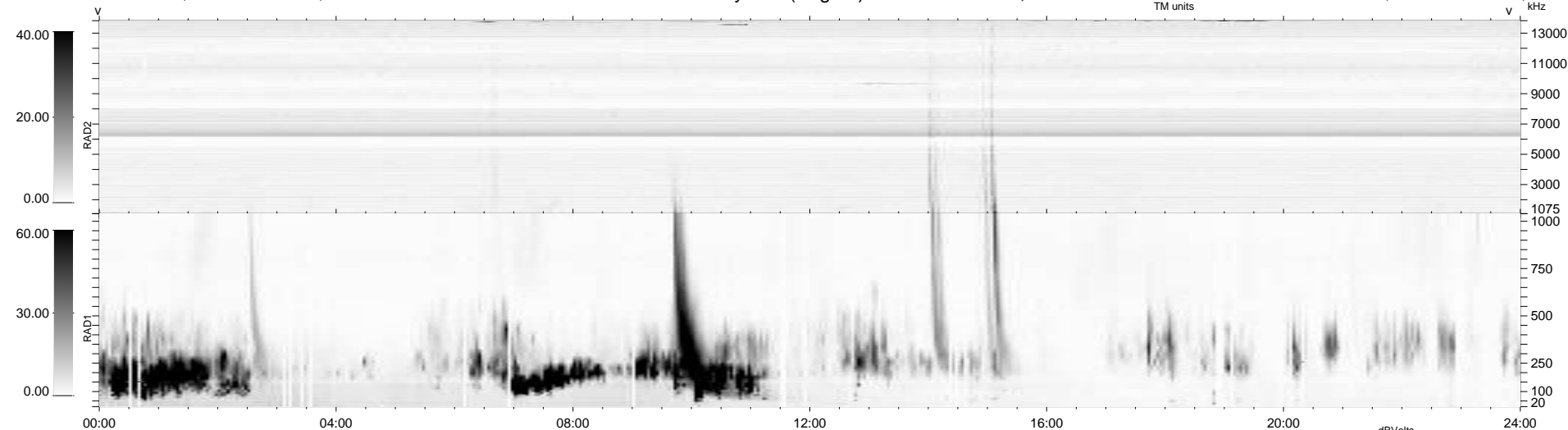
385 bad + 554 good MF/939MF projected (58%) - 0 missing MFs
 Avg interval = 180 secs
 Re = 206.48 (196.91, 61.61, -8.06 GSE)

windlib 2.0b

LZ version = v01

WIND/WAVES Summary Plot (Page 1) for 17-NOV-2021, DOY = 321

DAILY 2021-11-18 16:20:06
 Re = 207.58 (197.17, 64.44, -7.74 GSE)



RAD2
 Antenna Ey
 Mode LIN(1)
 SUM/SEP SEP
 Toggle OFF
 RAD1
 Antenna Ex
 Mode LIS(2,4)
 SUM/SEP SUM
 Toggle OFF
 TNR
 Antenna ExEy
 Mode A-32
 Sweep ACE