

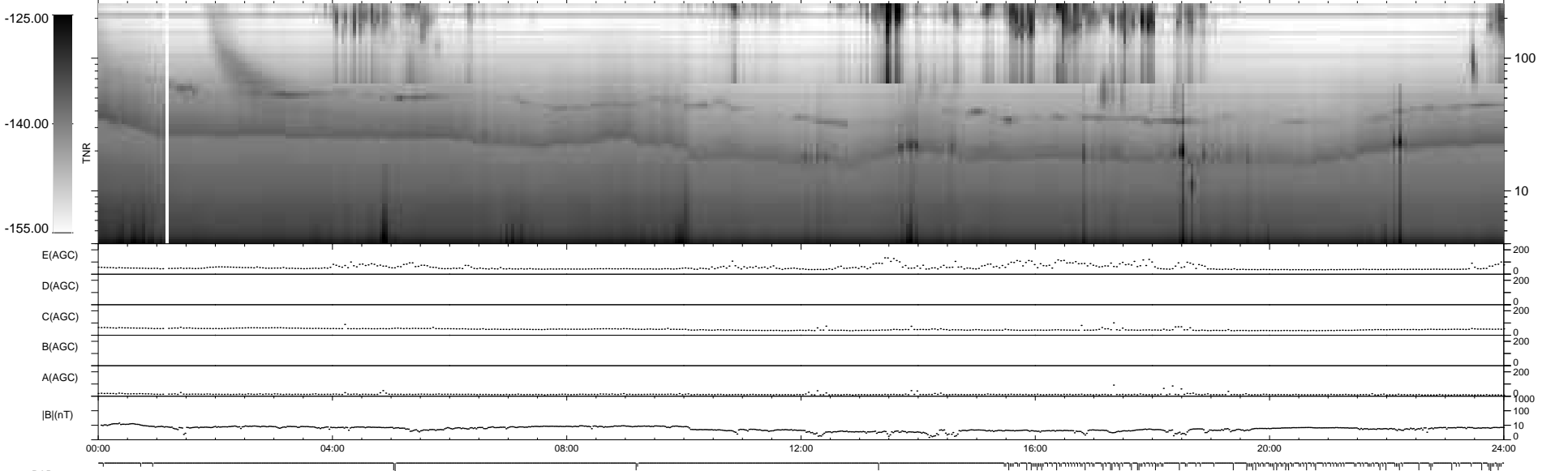
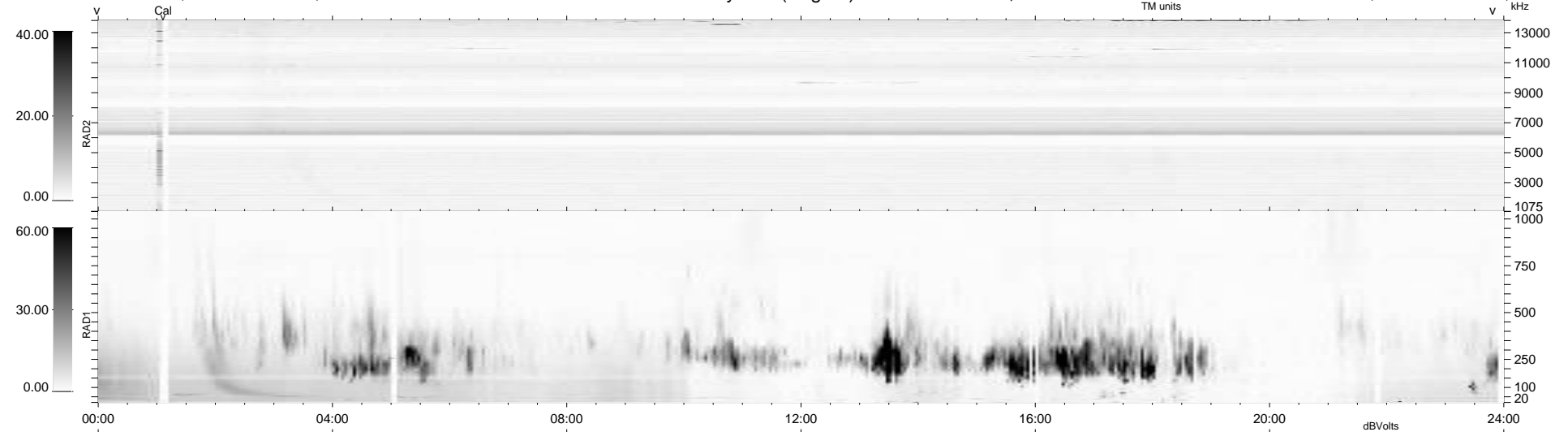
145 bad + 794 good MF/939MF projected (84%) - 0 missing MFs
 Avg interval = 180 secs
 Re = -205.43 (196.70, 58.65, -8.36 GSE)

windlib 2.0b

LZ version = v01

WIND/WAVES Summary Plot (Page 1) for 16-NOV-2021, DOY = 320

DAILY 2021-11-17 15:20:04
 Re = 206.47 (196.91, 61.59, -8.06 GSE)



```

RAD2
Antenna Ey .....
Mode LIN(1) .....
SUM/SEP SEP .....
Toggle OFF .....

RAD1
Antenna Ex .....
Mode LIS(2,4) .....
SUM/SEP SUM .....
Toggle OFF .....

TNR
Antenna ExEy .....
Mode A-32 .....
Sweep ACE .....
  
```