

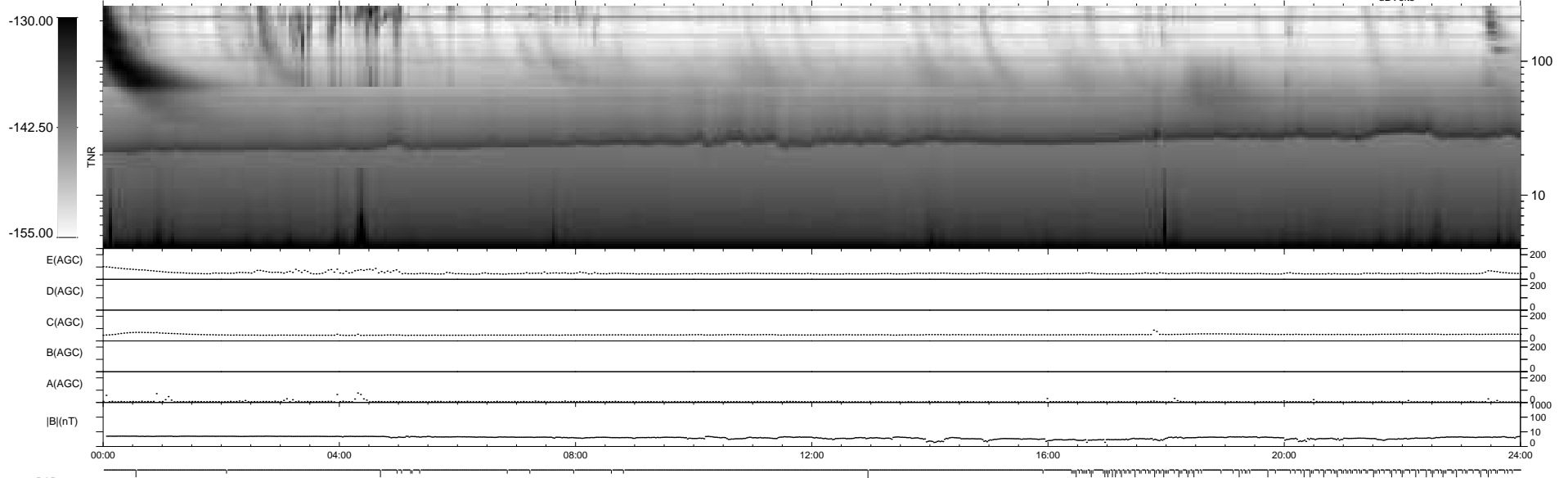
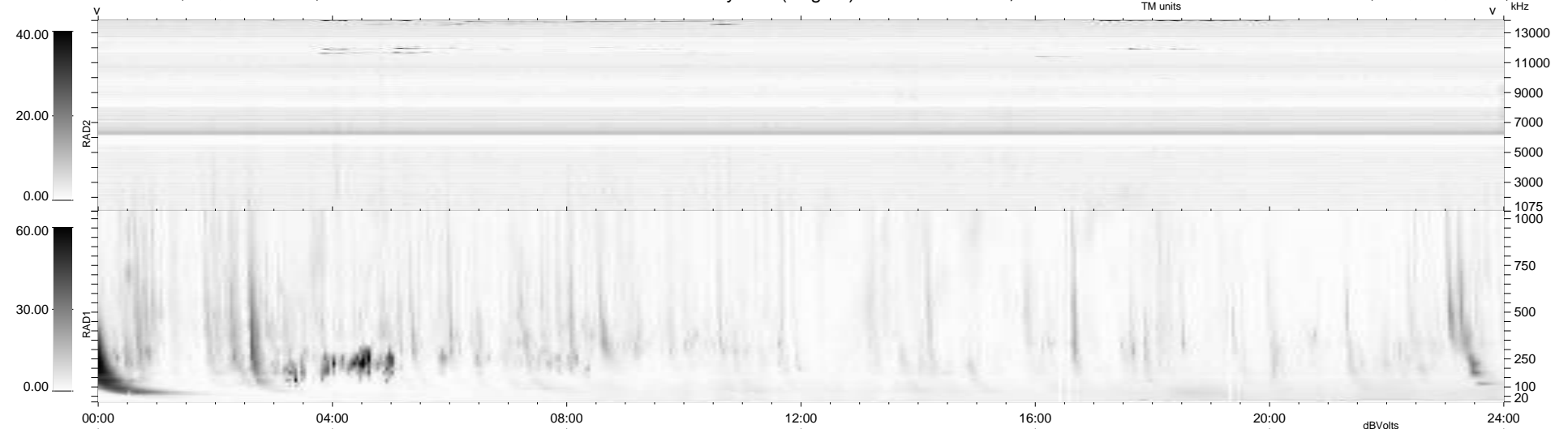
140 bad + 799 good MF/939MF projected (85%) - 0 missing MFs
 Avg interval = 180 secs
 Re = 202.64 (196.39, 49.13, -9.16 GSE)

windlib 2.0b

LZ version = v01

WIND/WAVES Summary Plot (Page 1) for 13-NOV-2021, DOY = 317

DAILY 2021-11-14 07:20:04
 Re = 203.50 (196.44, 52.39, -8.91 GSE)



RAD2
 Antenna Ey
 Mode LIN(1)
 SUM/SEP SEP
 Toggle OFF

RAD1
 Antenna Ex
 Mode LIS(2,4)
 SUM/SEP SUM
 Toggle OFF

TNR
 Antenna ExEy
 Mode A-32
 Sweep ACE