

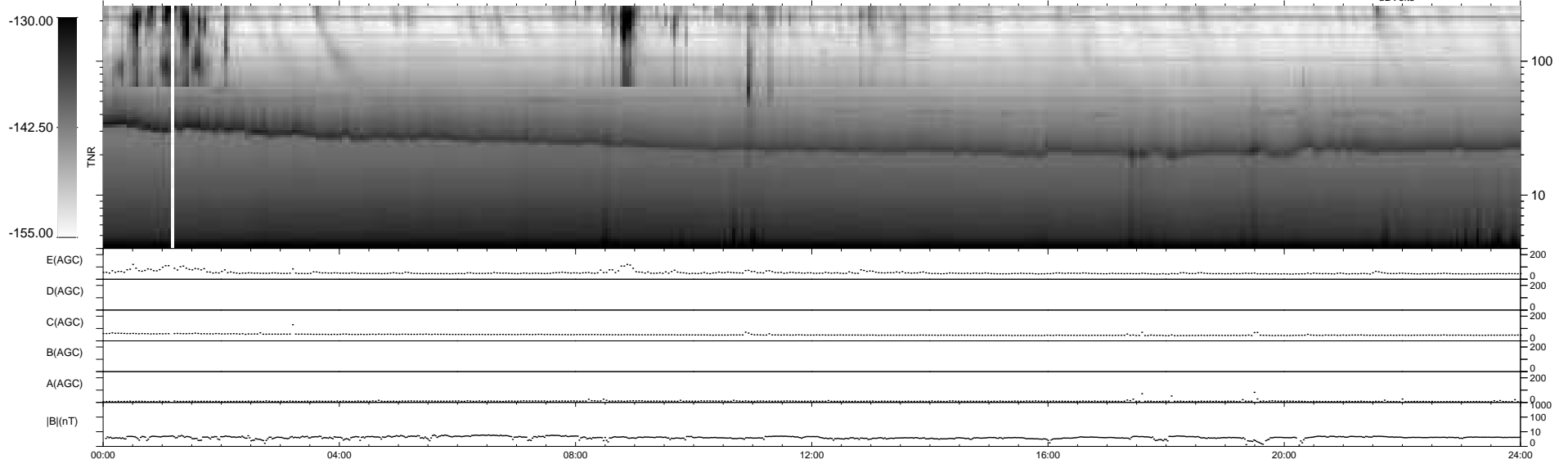
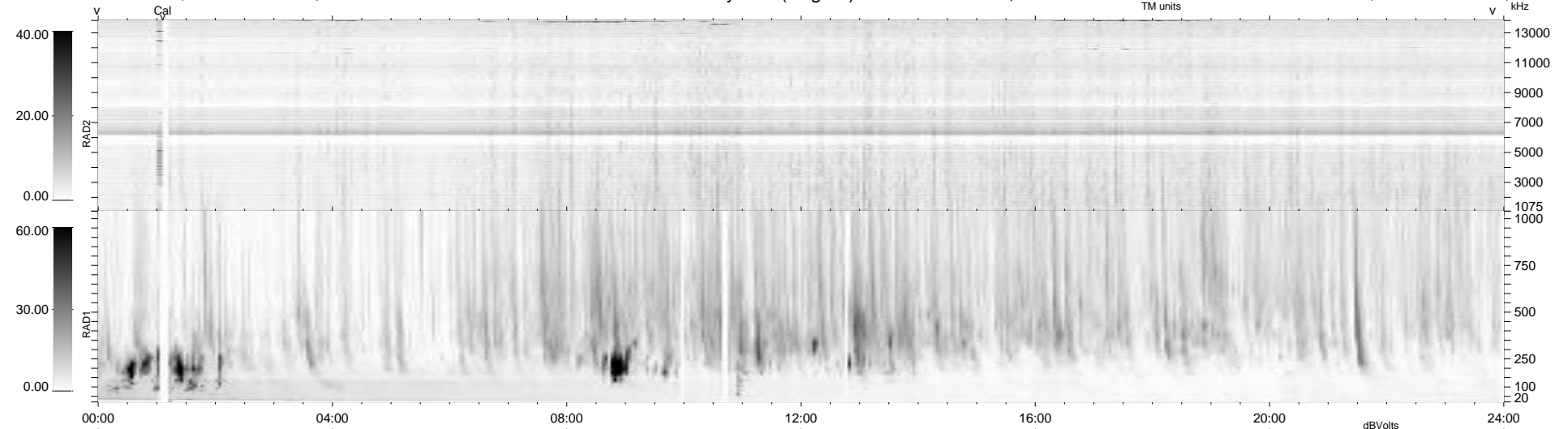
95 bad + 844 good MF/939MF projected (89%) - 0 missing MFs
 Avg interval = 180 secs
 Re = 200.41 (196.40, 38.66, -9.80 GSE)

windlib 2.0b

LZ version = v01

WIND/WAVES Summary Plot (Page 1) for 10-NOV-2021, DOY = 314

DAILY 2021-11-11 17:20:05
 Re = 201.09 (196.37, 42.22, -9.61 GSE)



RAD2
 Antenna Ey
 Mode LIN(1)
 SUM/SEP SEP
 Toggle OFF
 RAD1
 Antenna Ex
 Mode LIS(2,4)
 SUM/SEP SUM
 Toggle OFF
 TNR
 Antenna ExEy
 Mode A-32
 Sweep ACE