

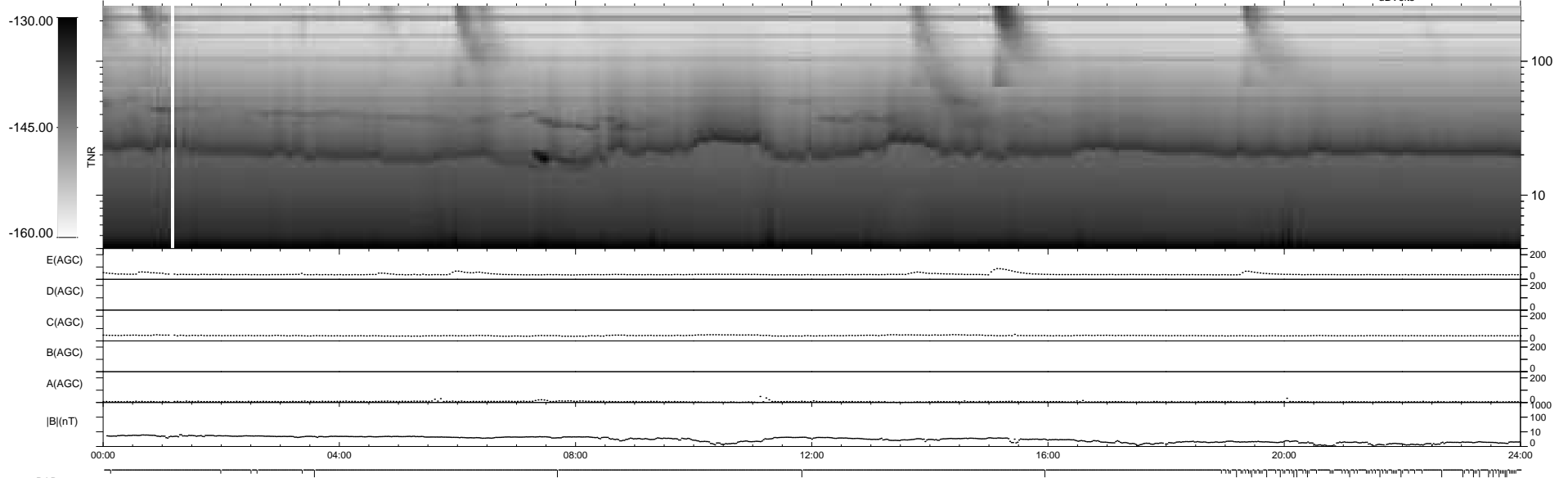
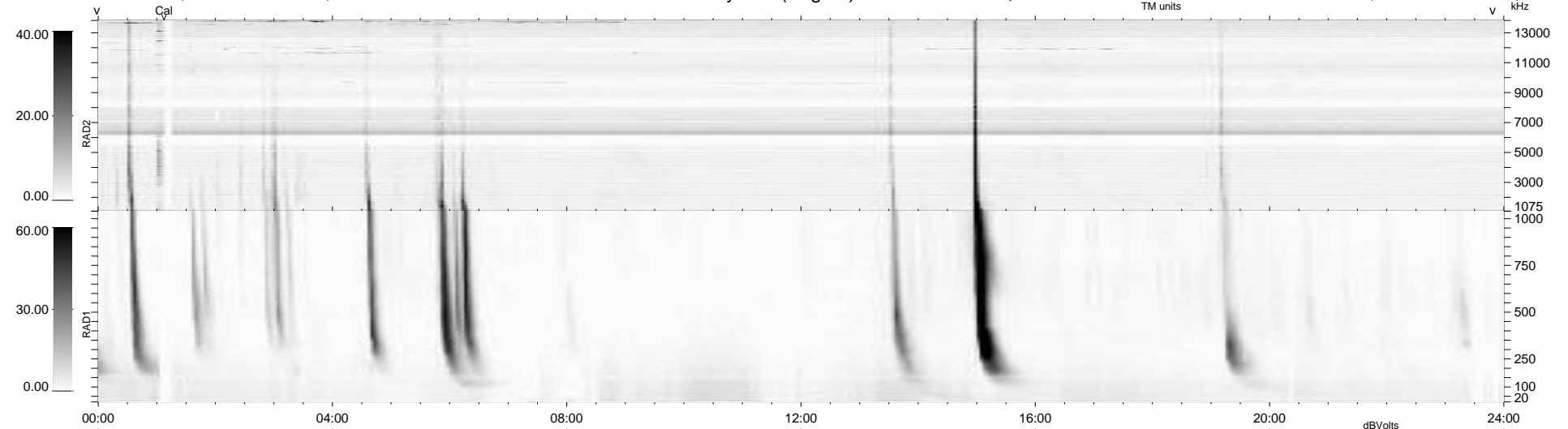
89 bad + 850 good MF/939MF projected (90%) - 0 missing MFs
 Avg interval = 180 secs
 Re = 196.98 (196.04, -16.08, -10.53 GSE)

windlib 2.0b

LZ version = v01

WIND/WAVES Summary Plot (Page 1) for 27-OCT-2021, DOY = 300

DAILY 2021-10-28 18:20:05
 Re = 196.74 (196.07, -12.29, -10.59 GSE)



RAD2
 Antenna Ey
 Mode LIN(1)
 SUM/SEP SEP
 Toggle OFF

RAD1
 Antenna Ex
 Mode LIS(2,4)
 SUM/SEP SUM
 Toggle OFF

TNR
 Antenna ExEy
 Mode A-32
 Sweep ACE