

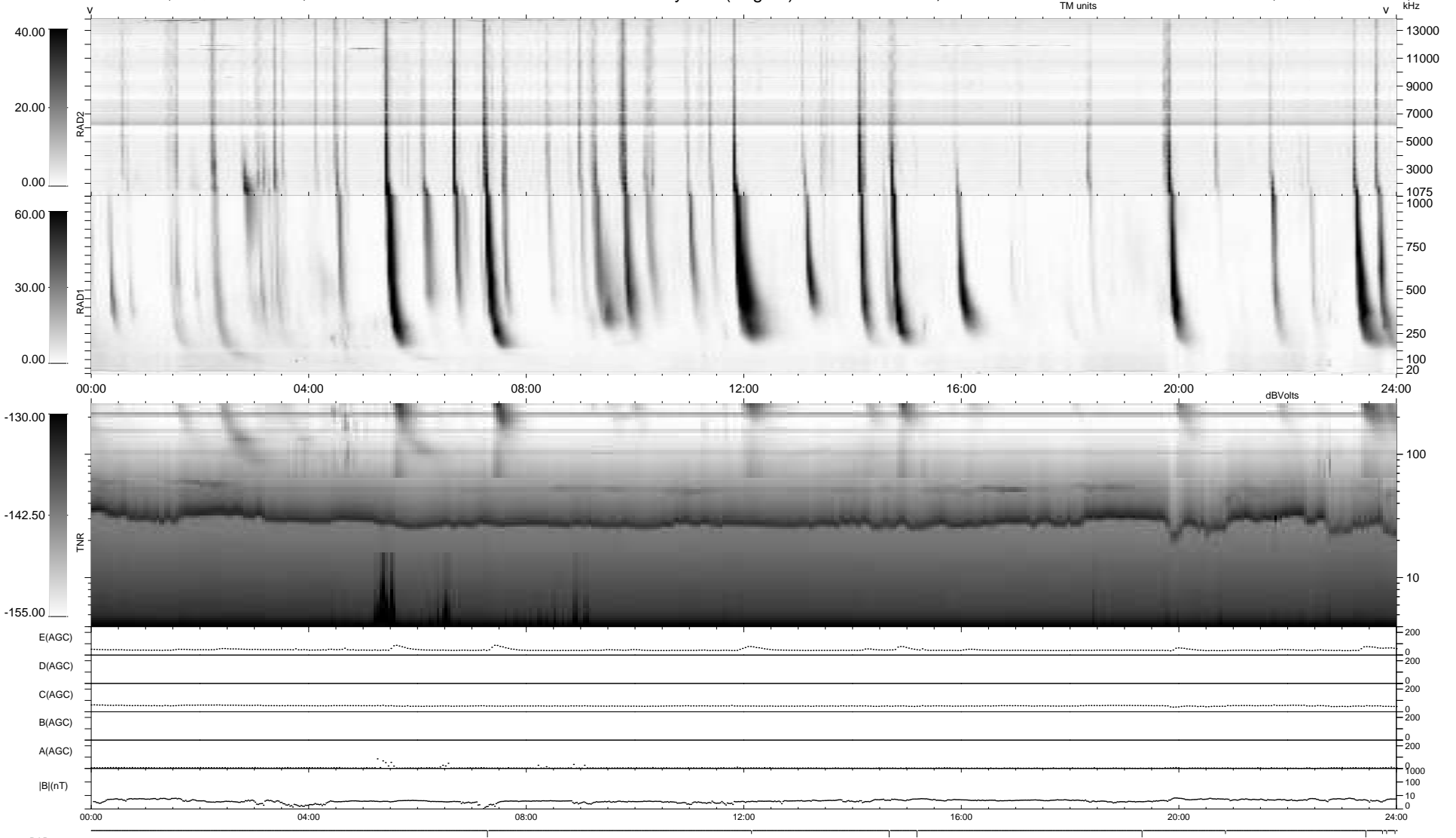
10 bad + 930 good MF/940MF projected (98%) - 0 missing MFs  
 Avg interval = 180 secs  
 Re = 197.31 (196.03, -19.85, -10.45 GSE)

windlib 2.0b

LZ version = v03

### WIND/WAVES Summary Plot (Page 1) for 26-OCT-2021, DOY = 299

DAILY 2021-10-29 16:20:05  
 Re = 196.98 (196.04, -16.11, -10.53 GSE)



```

RAD2
Antenna Ey .....
Mode LIN(1) .....
SUM/SEP SEP .....
Toggle OFF .....

RAD1
Antenna Ex .....
Mode LIS(2,4) .....
SUM/SEP SUM .....
Toggle OFF .....

TNR
Antenna ExEy .....
Mode A-32 .....
Sweep ACE .....
  
```