

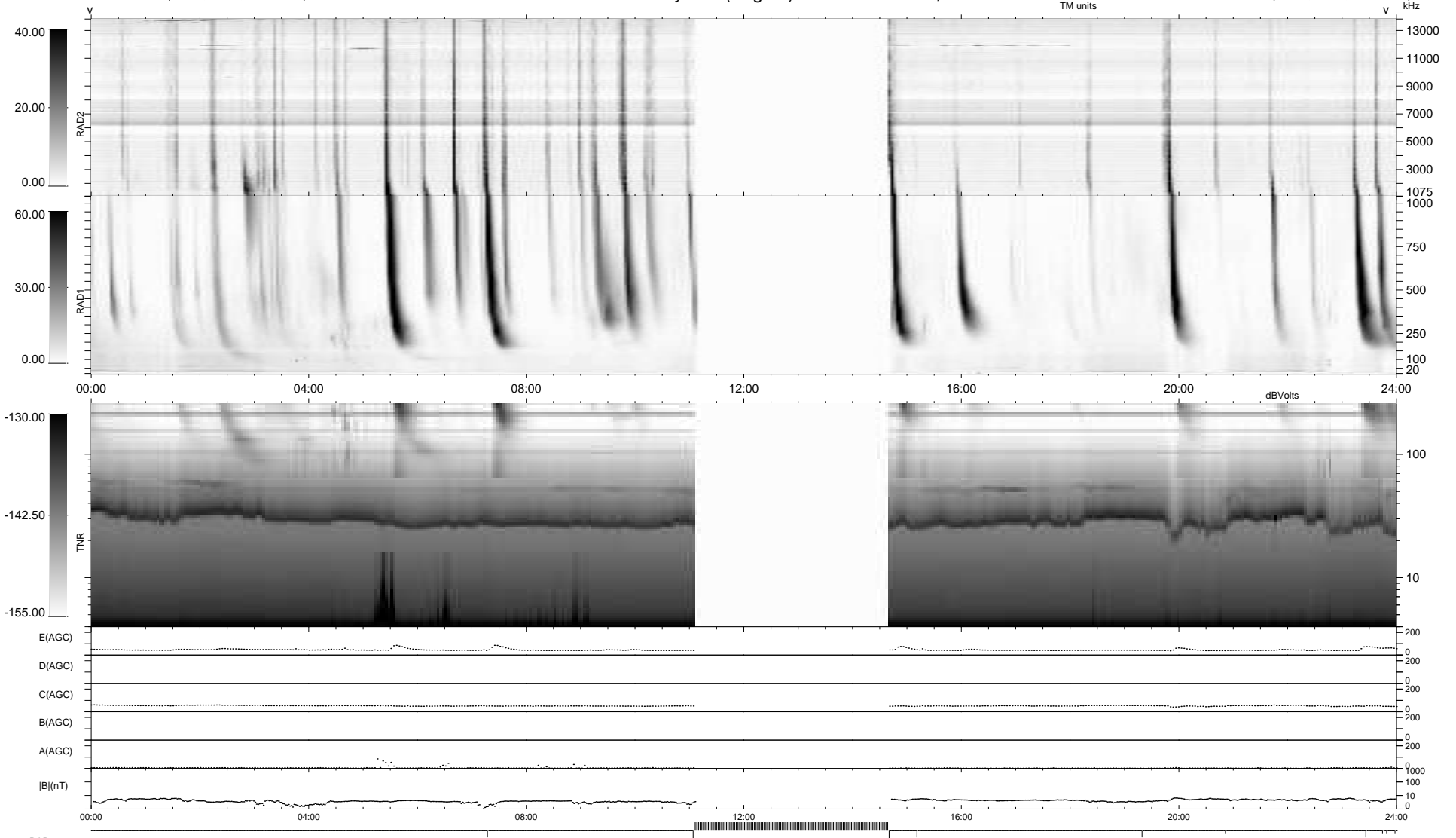
10 bad + 790 good MF/940MF projected (84%) - 140 missing MFs  
 Avg interval = 180 secs  
 Re = 197.31 (196.03, -19.85, -10.45 GSE)

windlib 2.0b

LZ version = v01

### WIND/WAVES Summary Plot (Page 1) for 26-OCT-2021, DOY = 299

DAILY 2021-10-27 21:20:06  
 Re = 196.98 (196.04, -16.11, -10.53 GSE)



RAD2  
 Antenna Ey .....  
 Mode LIN(1) .....  
 SUM/SEP SEP .....  
 Toggle OFF .....  
 RAD1  
 Antenna Ex .....  
 Mode LIS(2/4) .....  
 SUM/SEP SUM .....  
 Toggle OFF .....  
 TNR  
 Antenna ExEy .....  
 Mode A-32 .....  
 Sweep ACE .....