

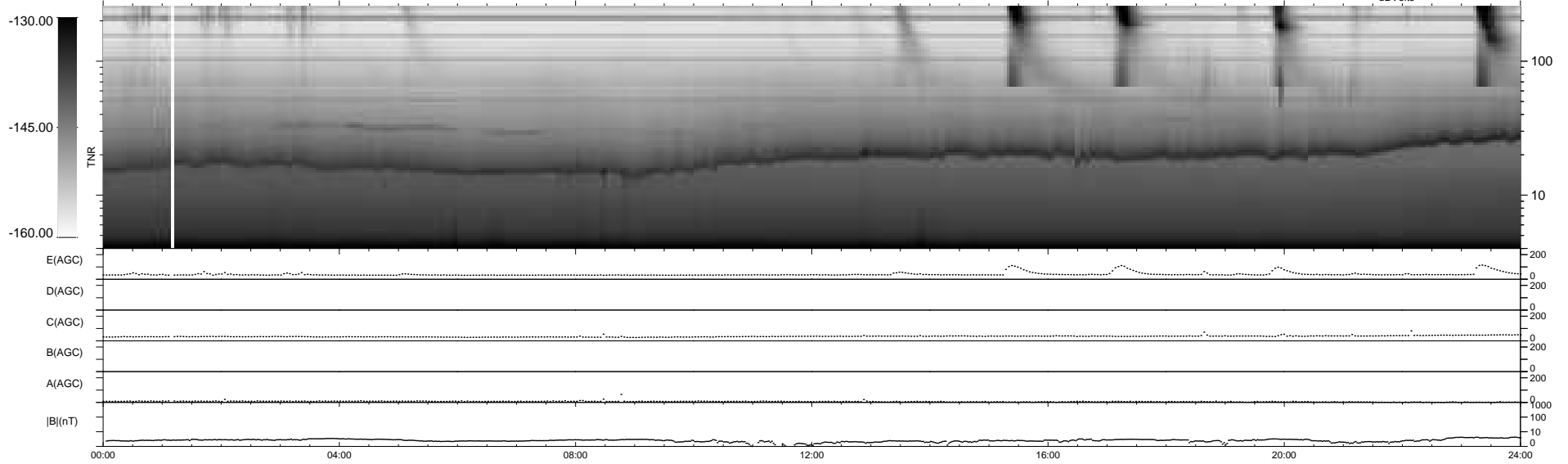
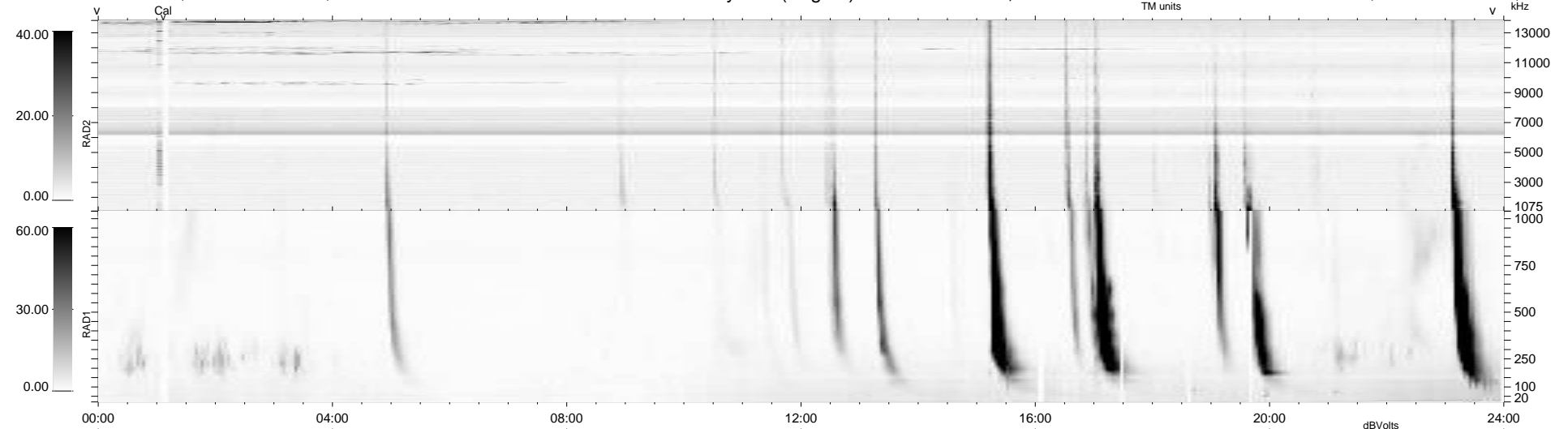
150 bad + 799 good MF/939MF projected (84%) - 0 missing MFs
Avg interval = 180 secs
Re = 198.88 (196.22, -30.81, -10.12 GSE)

windlib 2.0b

LZ version = v01

WIND/WAVES Summary Plot (Page 1) for 23-OCT-2021, DOY = 296

DAILY 2021-10-24 16:20:05
Re = 198.27 (196.12, -27.24, -10.25 GSE)



RAD2
Antenna Ey
Mode LIN(1)
SUM/SEP SEP
Toggle OFF

RAD1
Antenna Ex
Mode LIS(2,4)
SUM/SEP SUM
Toggle OFF

TNR
Antenna ExEy
Mode A-32
Sweep ACE