

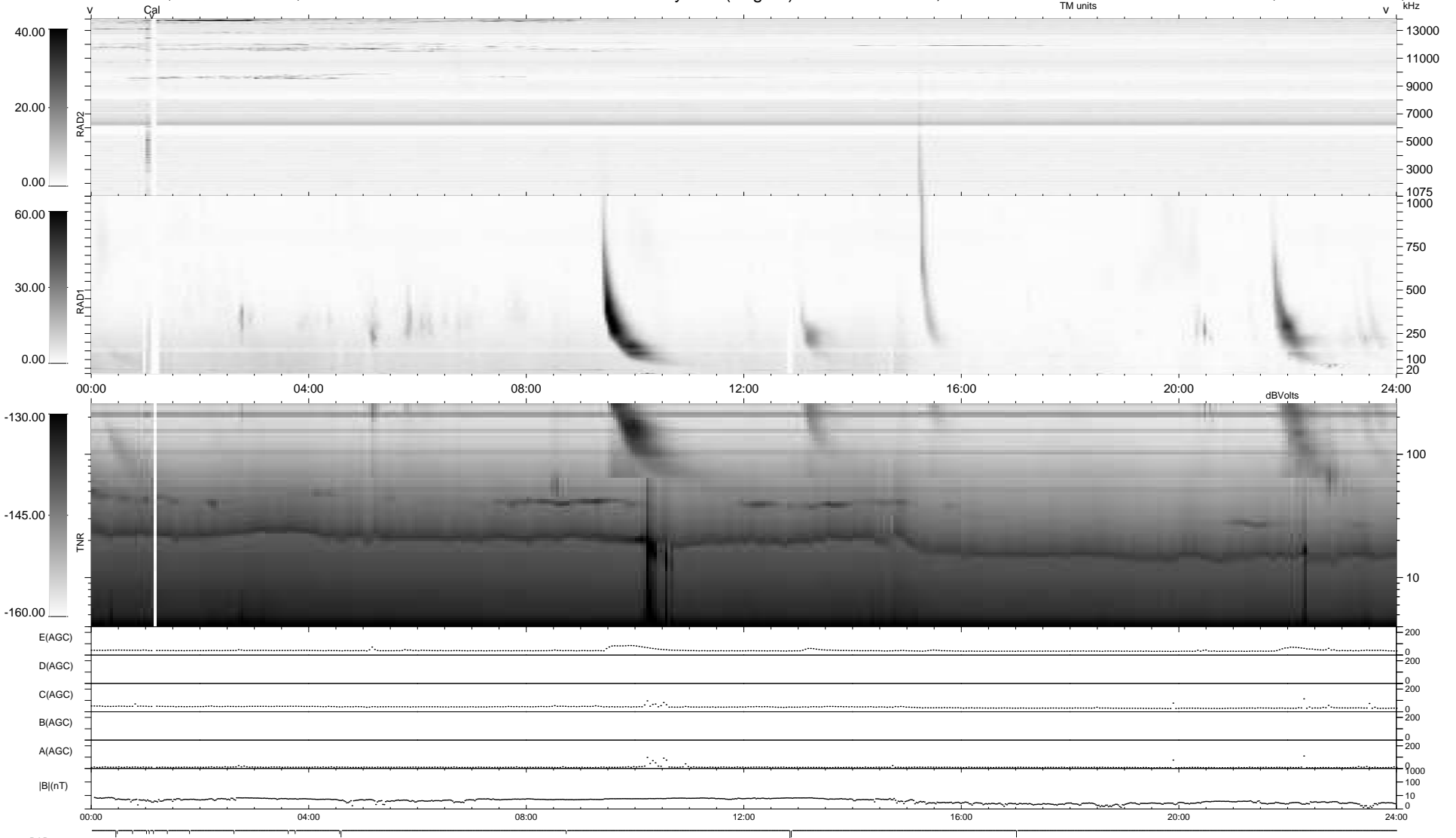
17 bad + 922 good MF/939MF projected (98%) - 0 missing MFs  
 Avg interval = 180 secs  
 Re = 200.41 (196.57, -37.80, -9.81 GSE)

windlib 2.0b

LZ version = v01

### WIND/WAVES Summary Plot (Page 1) for 21-OCT-2021, DOY = 294

DAILY 2021-10-22 12:20:05  
 Re = 199.60 (196.37, -34.36, -9.97 GSE)



```

RAD2
Antenna Ey .....
Mode LIN(1) .....
SUM/SEP SEP .....
Toggle OFF .....

RAD1
Antenna Ex .....
Mode LIS(2,4) .....
SUM/SEP SUM .....
Toggle OFF .....

TNR
Antenna ExEy .....
Mode A-32 .....
Sweep ACE .....
  
```