

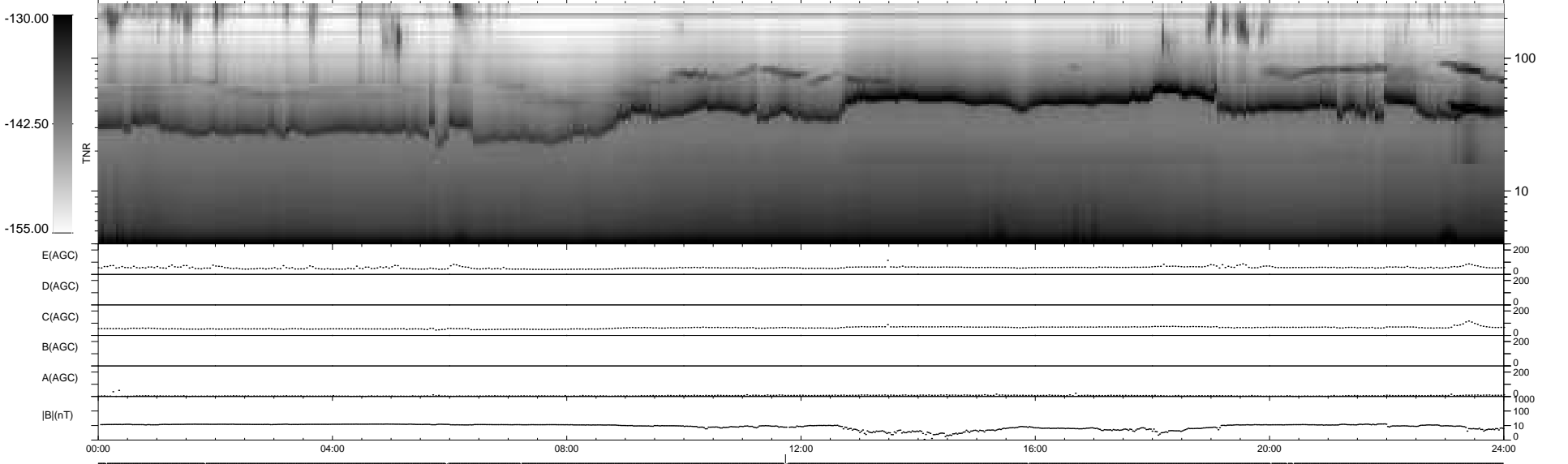
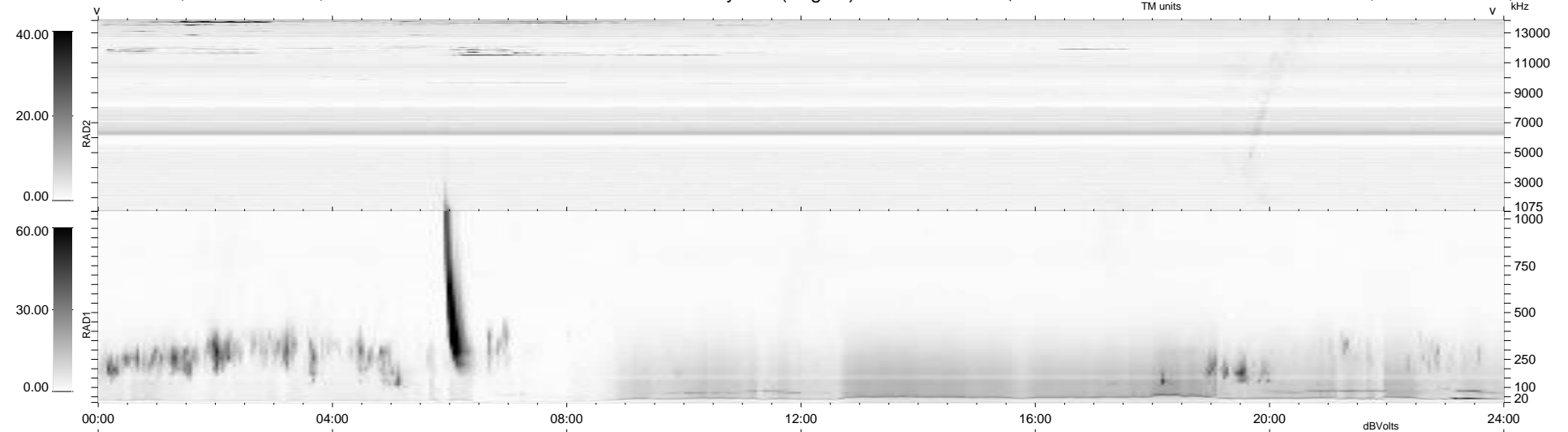
11 bad + 927 good MF/939MF projected (98%) - 1 missing MF
 Avg interval = 180 secs
 Re = 203.38 (197.46, -47.82, -9.20 GSE)

windlib 2.0b

LZ version = v01

WIND/WAVES Summary Plot (Page 1) for 18-OCT-2021, DOY = 291

DAILY 2021-10-19 12:20:04
 Re = 202.31 (197.11, -44.56, -9.42 GSE)



RAD2
 Antenna Ey
 Mode LIN(1)
 SUM/SEP SEP
 Toggle OFF
 RAD1
 Antenna Ex
 Mode LIS(2,4)
 SUM/SEP SUM
 Toggle OFF
 TNR
 Antenna ExEy
 Mode A-32
 Sweep ACE