

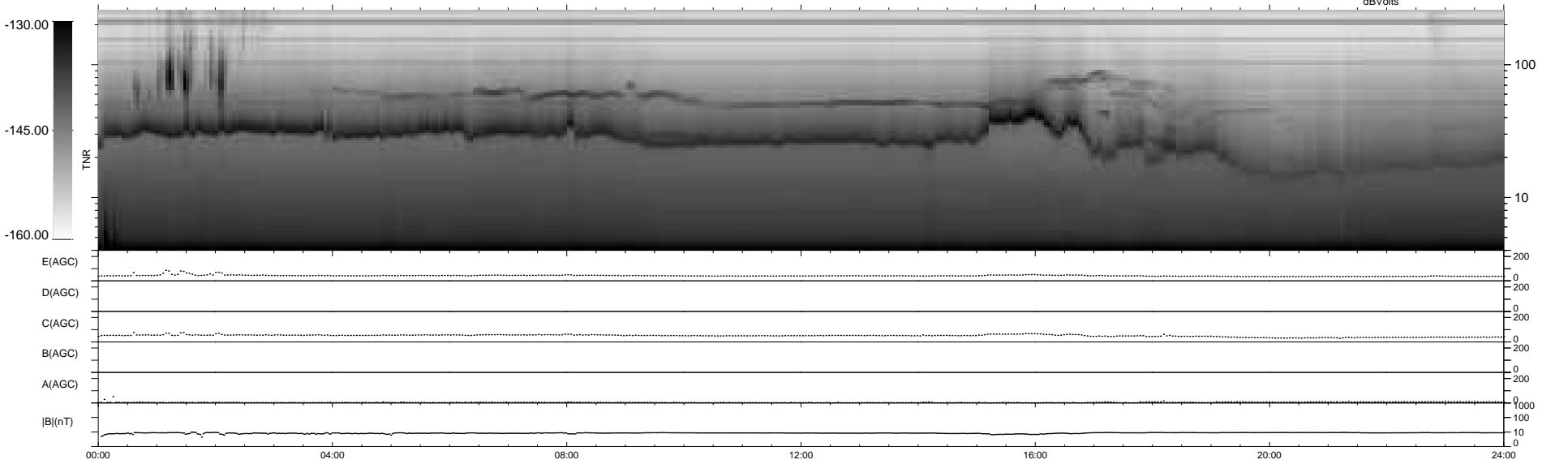
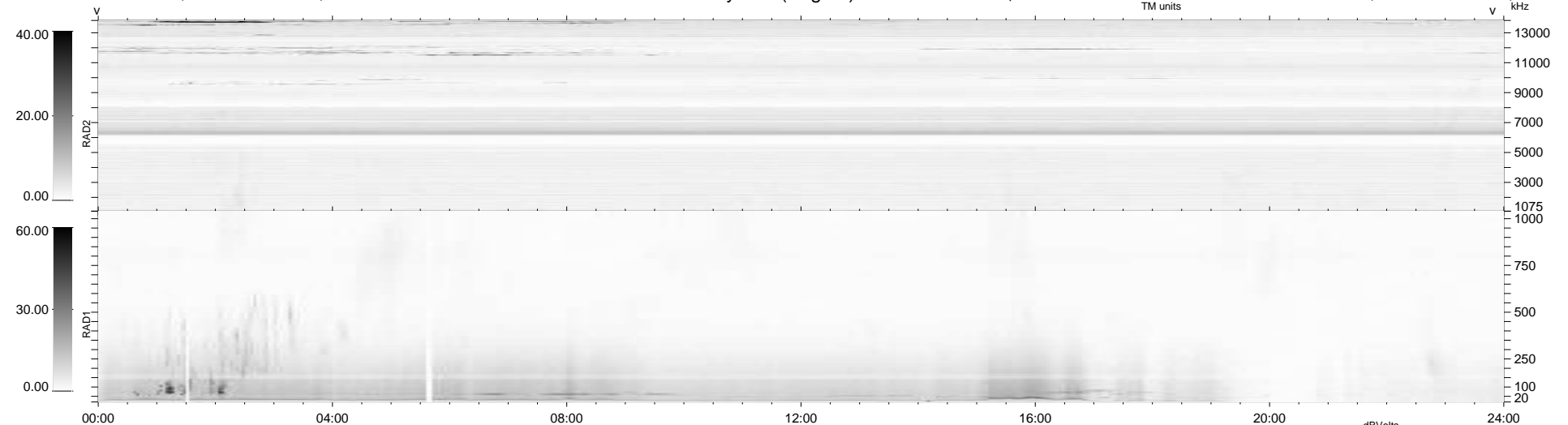
18 bad + 921 good MF/939MF projected (98%) - 0 missing MFs
 Avg interval = 180 secs
 Re = 205.78 (198.32, -54.20, -8.70 GSE)

windlib 2.0b

LZ version = v02

WIND/WAVES Summary Plot (Page 1) for 16-OCT-2021, DOY = 289

DAILY 2021-10-18 12:20:05
 Re = 204.55 (197.87, -51.06, -8.96 GSE)



```

RAD2
Antenna Ey .....
Mode LIN(1) .....
SUM/SEP SEP .....
Toggle OFF .....

RAD1
Antenna Ex .....
Mode LIS(2,4) .....
SUM/SEP SUM .....
Toggle OFF .....

TNR
Antenna ExEy .....
Mode A-32 .....
Sweep ACE .....
  
```