

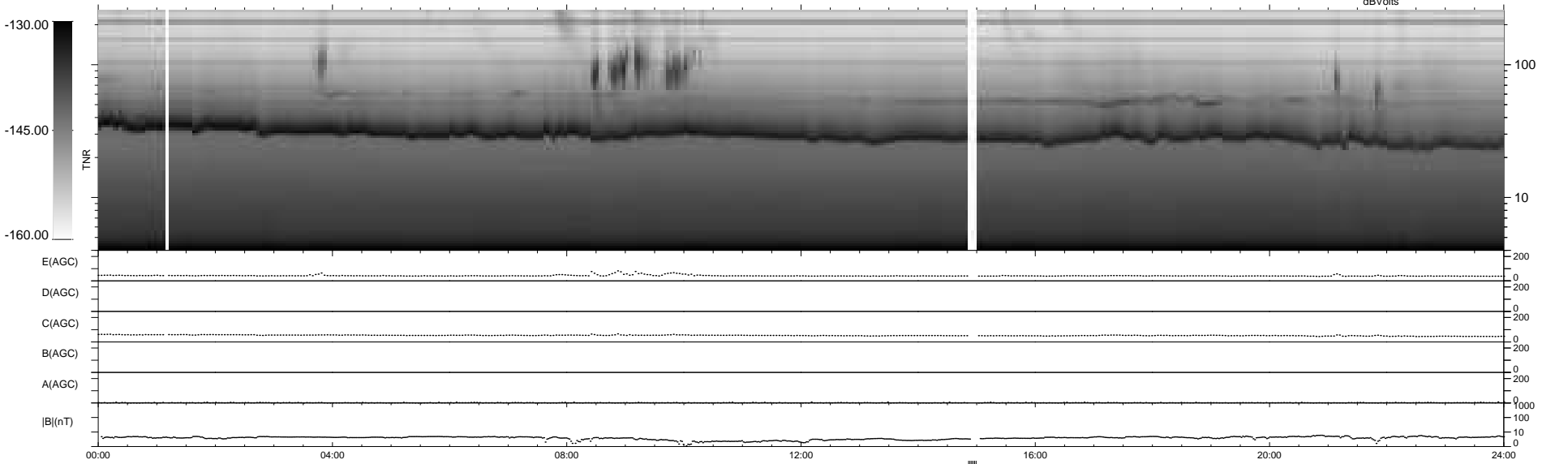
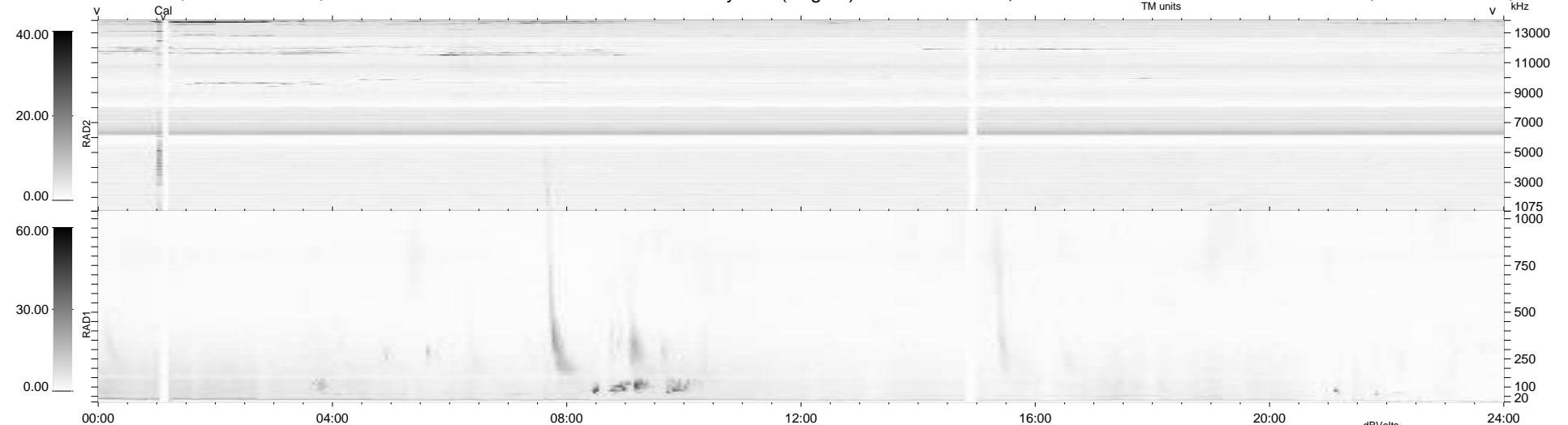
19 bad + 914 good MF/939MF projected (97%) - 6 missing MFs  
 Avg interval = 180 secs  
 Re = 207.09 (198.82, -57.31, -8.43 GSE)

windlib 2.0b

LZ version = v01

### WIND/WAVES Summary Plot (Page 1) for 15-OCT-2021, DOY = 288

DAILY 2021-10-16 12:20:05  
 Re = 205.79 (198.32, -54.22, -8.70 GSE)



RAD2  
 Antenna Ey .....  
 Mode LIN(1) .....  
 SUM/SEP SEP .....  
 Toggle OFF .....  
 RAD1  
 Antenna Ex .....  
 Mode LIS(2,4) .....  
 SUM/SEP SUM .....  
 Toggle OFF .....  
 TNR  
 Antenna ExEy .....  
 Mode A-32 .....  
 Sweep ACE .....