

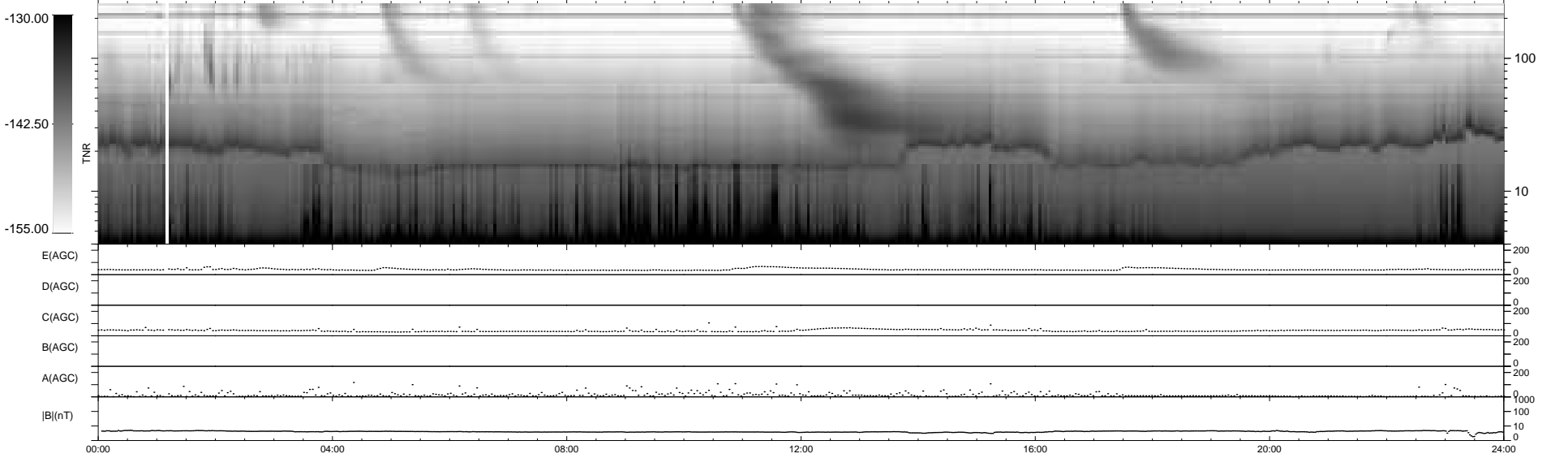
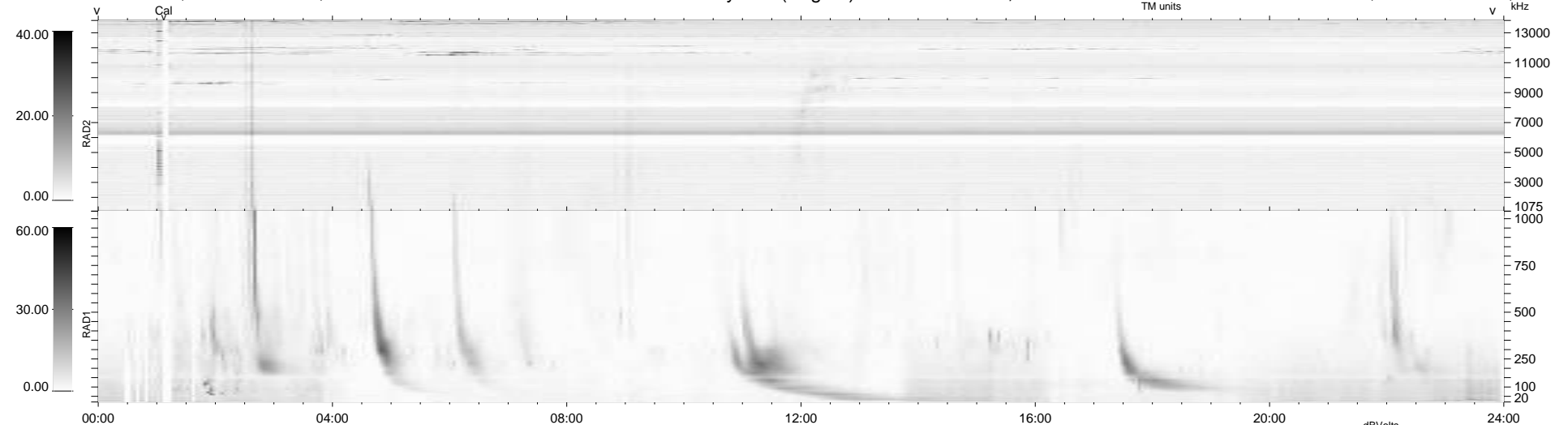
54 bad + 885 good MF/939MF projected (94%) - 0 missing MFs  
 Avg interval = 180 secs  
 Re = 209.89 (199.94, -63.35, -7.83 GSE)

windlib 2.0b

LZ version = v01

### WIND/WAVES Summary Plot (Page 1) for 13-OCT-2021, DOY = 286

DAILY 2021-10-14 12:20:05  
 Re = 208.47 (199.37, -60.38, -8.13 GSE)



```

RAD2
Antenna Ey .....
Mode LIN(1) .....
SUM/SEP SEP .....
Toggle OFF .....

RAD1
Antenna Ex .....
Mode LIS(2,4) .....
SUM/SEP SUM .....
Toggle OFF .....

TNR
Antenna ExEy .....
Mode A-32 .....
Sweep ACE .....
  
```