

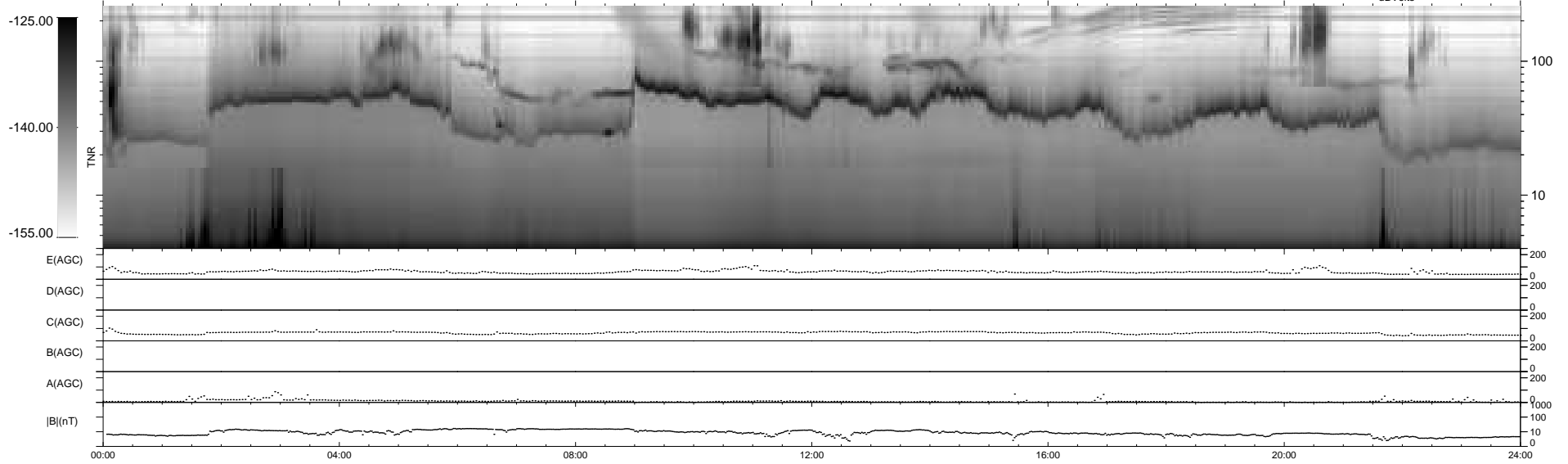
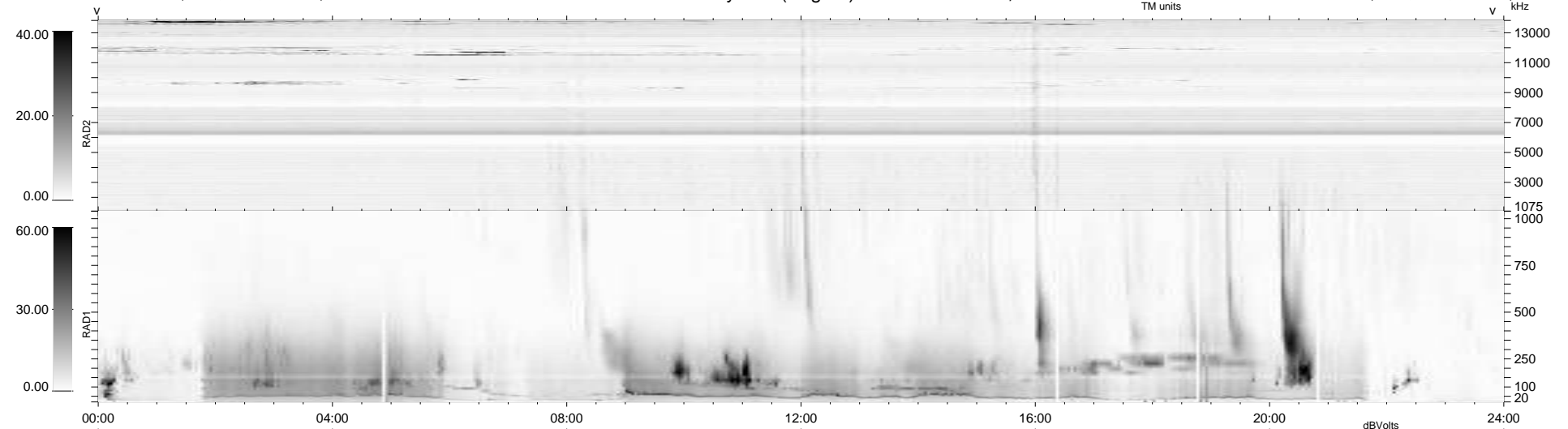
125 bad + 814 good MF/939MF projected (86%) - 0 missing MFs
 Avg interval = 180 secs
 Re = -211.36 (200.55, -66.29, -7.50 GSE)

windlib 2.0b

LZ version = v01

WIND/WAVES Summary Plot (Page 1) for 12-OCT-2021, DOY = 285

DAILY 2021-10-13 08:20:05
 Re = 209.90 (199.95, -63.37, -7.83 GSE)



```

RAD2
Antenna Ey .....
Mode LIN(1) .....
SUM/SEP SEP .....
Toggle OFF .....

RAD1
Antenna Ex .....
Mode LIS(2,4) .....
SUM/SEP SUM .....
Toggle OFF .....

TNR
Antenna ExEy .....
Mode A-32 .....
Sweep ACE .....
  
```