

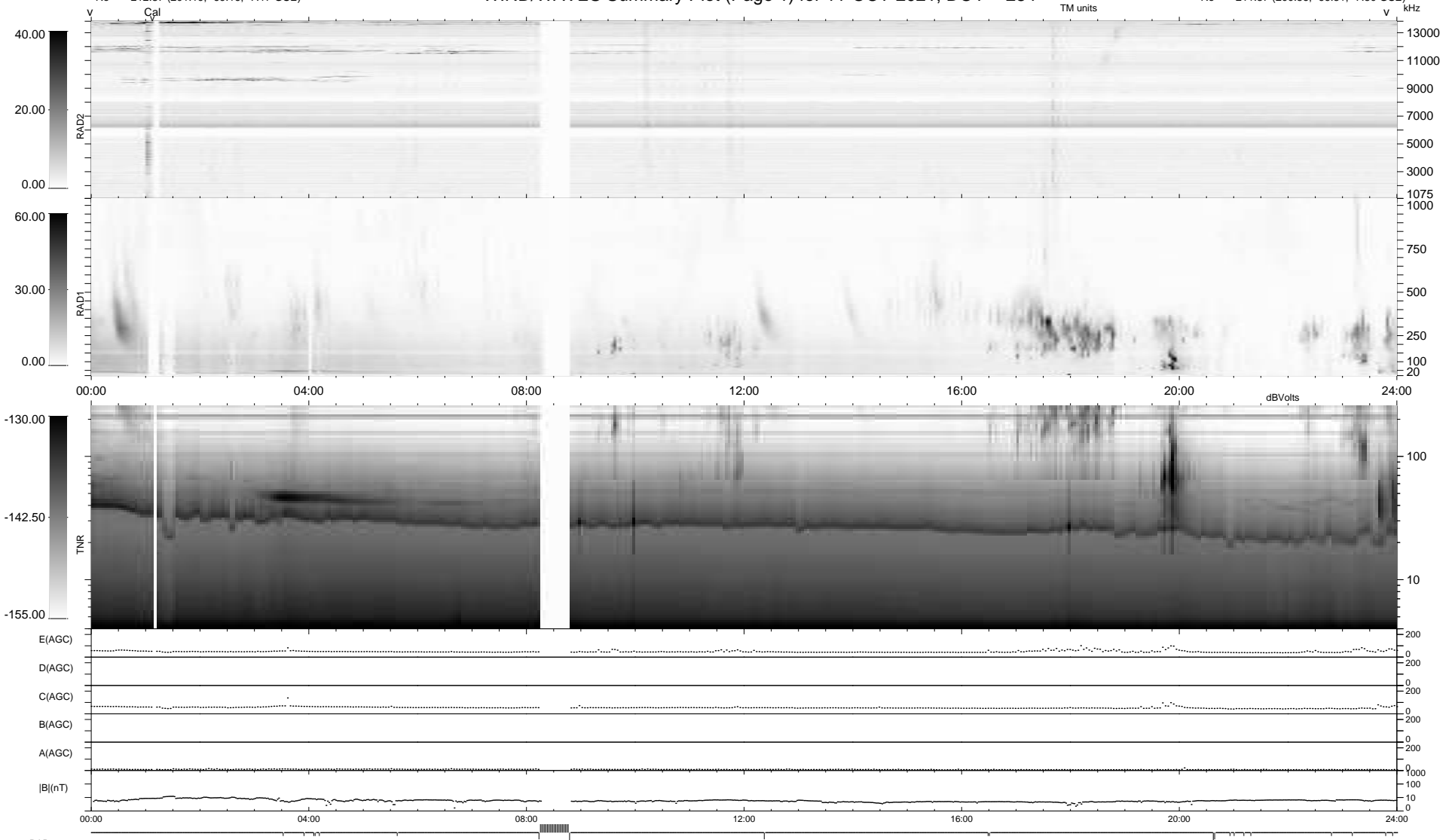
21 bad + 898 good MF/940MF projected (95%) - 21 missing MFs  
 Avg interval = 180 secs  
 Re = 212.87 (201.19, -69.16, -7.17 GSE)

windlib 2.0b

LZ version = v01

### WIND/WAVES Summary Plot (Page 1) for 11-OCT-2021, DOY = 284

DAILY 2021-10-12 19:20:06  
 Re = 211.37 (200.56, -66.31, -7.50 GSE)



```

RAD2
Antenna Ey .....
Mode LIN(1) .....
SUM/SEP SEP .....
Toggle OFF .....

RAD1
Antenna Ex .....
Mode LIS(2,4) .....
SUM/SEP SUM .....
Toggle OFF .....

TNR
Antenna ExEy .....
Mode A-32 .....
Sweep ACE .....
  
```