

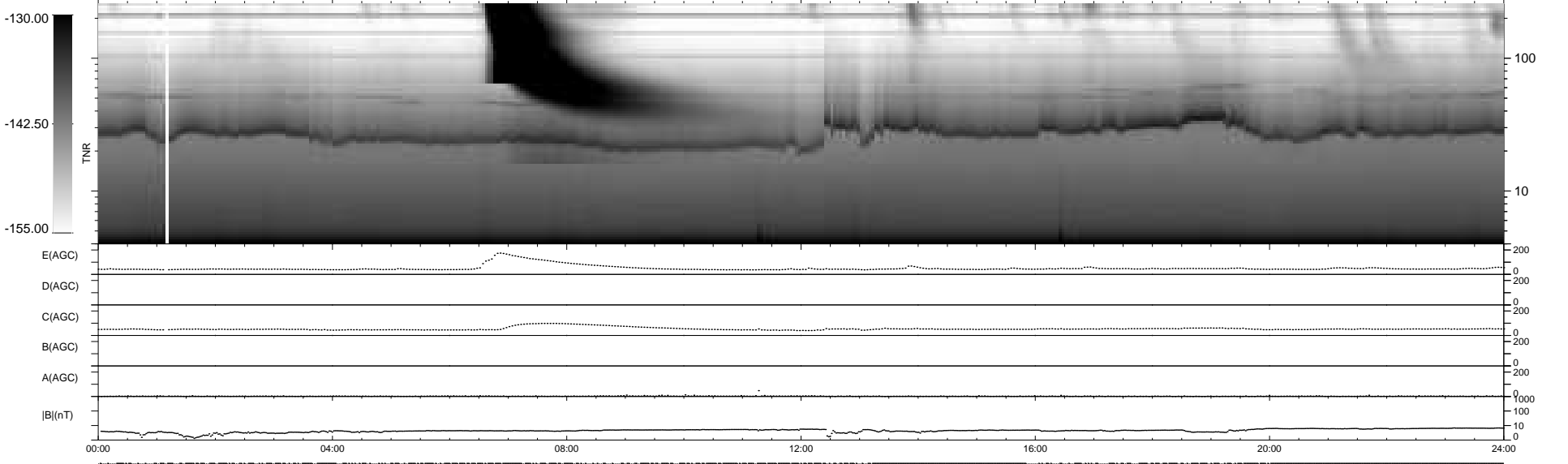
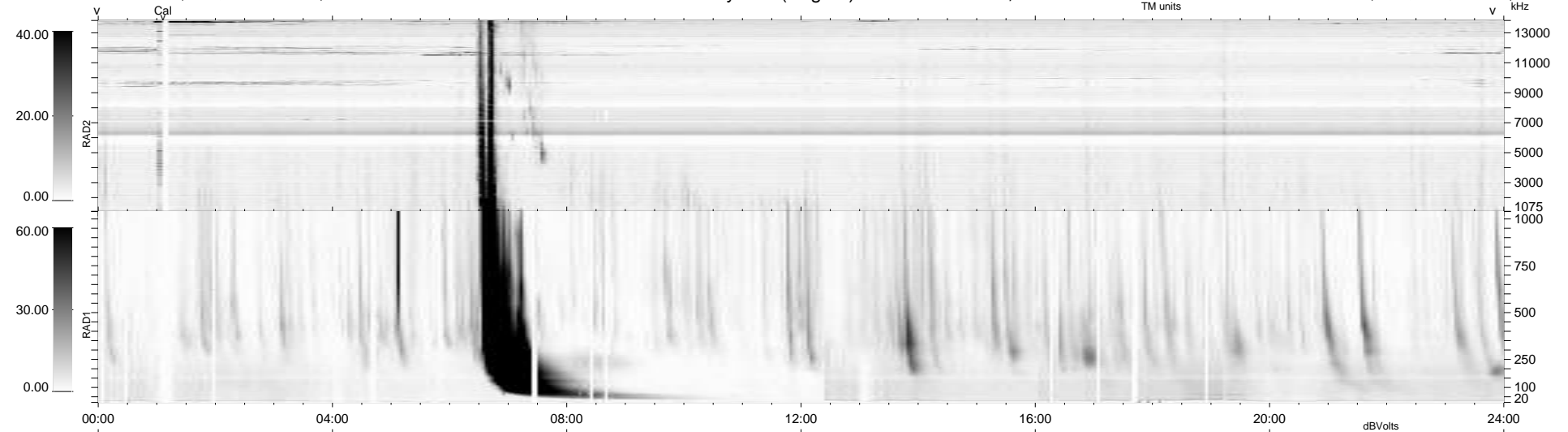
275 bad + 664 good MF/939MF projected (70%) - 0 missing MFs
 Avg interval = 180 secs
 Re = 215.94 (202.50, -74.70, -6.46 GSE)

windlib 2.0b

LZ version = v01

WIND/WAVES Summary Plot (Page 1) for 09-OCT-2021, DOY = 282

DAILY 2021-10-10 18:20:05
 Re = 214.41 (201.84, -71.99, -6.82 GSE)



```

RAD2
Antenna Ey .....
Mode LIN(1) .....
SUM/SEP SEP .....
Toggle OFF .....

RAD1
Antenna Ex .....
Mode LIS(2,4) .....
SUM/SEP SUM .....
Toggle OFF .....

TNR
Antenna ExEy .....
Mode A-32 .....
Sweep ACE .....
  
```