

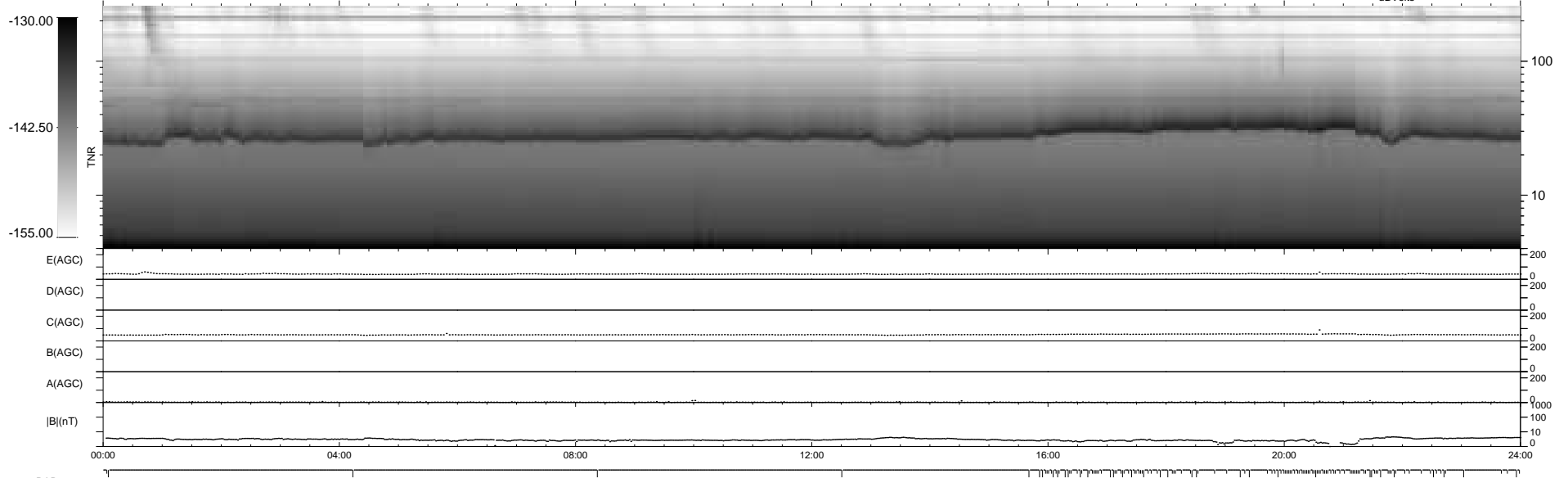
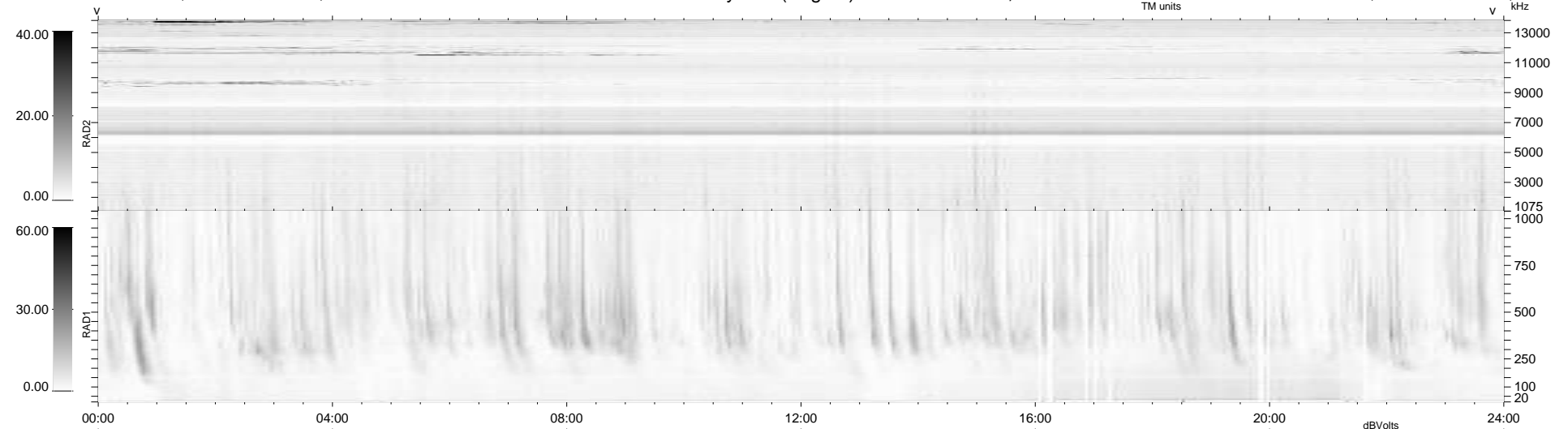
133 bad + 806 good MF/939MF projected (85%) - 0 missing MFs  
 Avg interval = 180 secs  
 Re = 217.48 (203.16, -77.35, -6.09 GSE)

windlib 2.0b

LZ version = v01

### WIND/WAVES Summary Plot (Page 1) for 08-OCT-2021, DOY = 281

DAILY 2021-10-09 18:20:05  
 Re = 215.95 (202.50, -74.72, -6.46 GSE)



RAD2  
 Antenna Ey  
 Mode LIN(1)  
 SUM/SEP SEP  
 Toggle OFF

RAD1  
 Antenna Ex  
 Mode LIS(2,4)  
 SUM/SEP SUM  
 Toggle OFF

TNR  
 Antenna ExEy  
 Mode A-32  
 Sweep ACE