

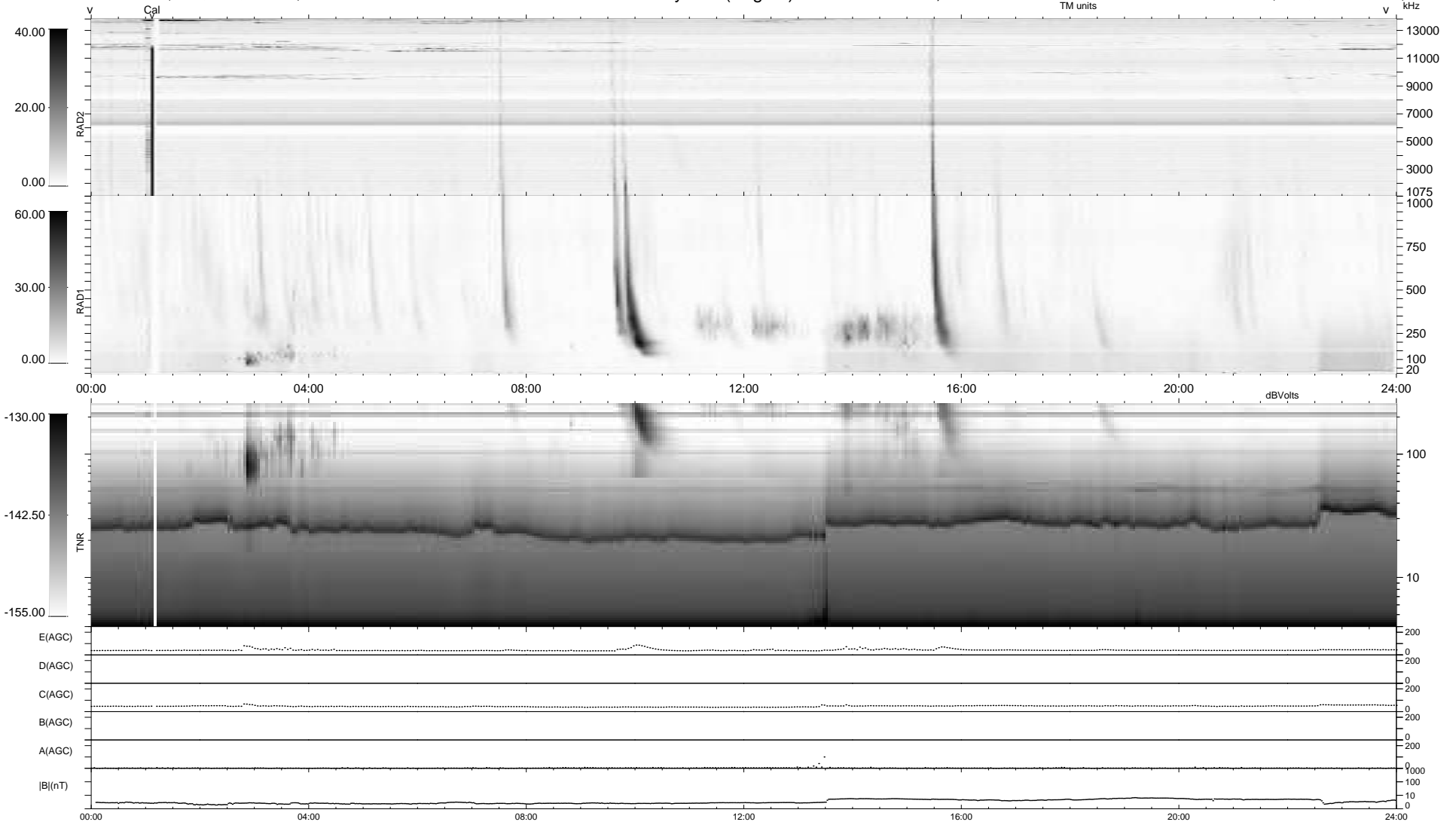
6 bad + 933 good MF/939MF projected (99%) - 0 missing MFs
 Avg interval = 180 secs
 Re = 222.01 (205.16, -84.68, -4.95 GSE)

windlib 2.0b

LZ version = v01

WIND/WAVES Summary Plot (Page 1) for 05-OCT-2021, DOY = 278

DAILY 2021-10-06 18:20:04
 Re = 220.53 (204.50, -82.37, -5.33 GSE)



RAD2
 Antenna Ey
 Mode LIN(1)
 SUM/SEP SEP
 Toggle OFF
 RAD1
 Antenna Ex
 Mode LIS(2,4)
 SUM/SEP SUM
 Toggle OFF
 TNR
 Antenna ExEy
 Mode A-32
 Sweep ACE