

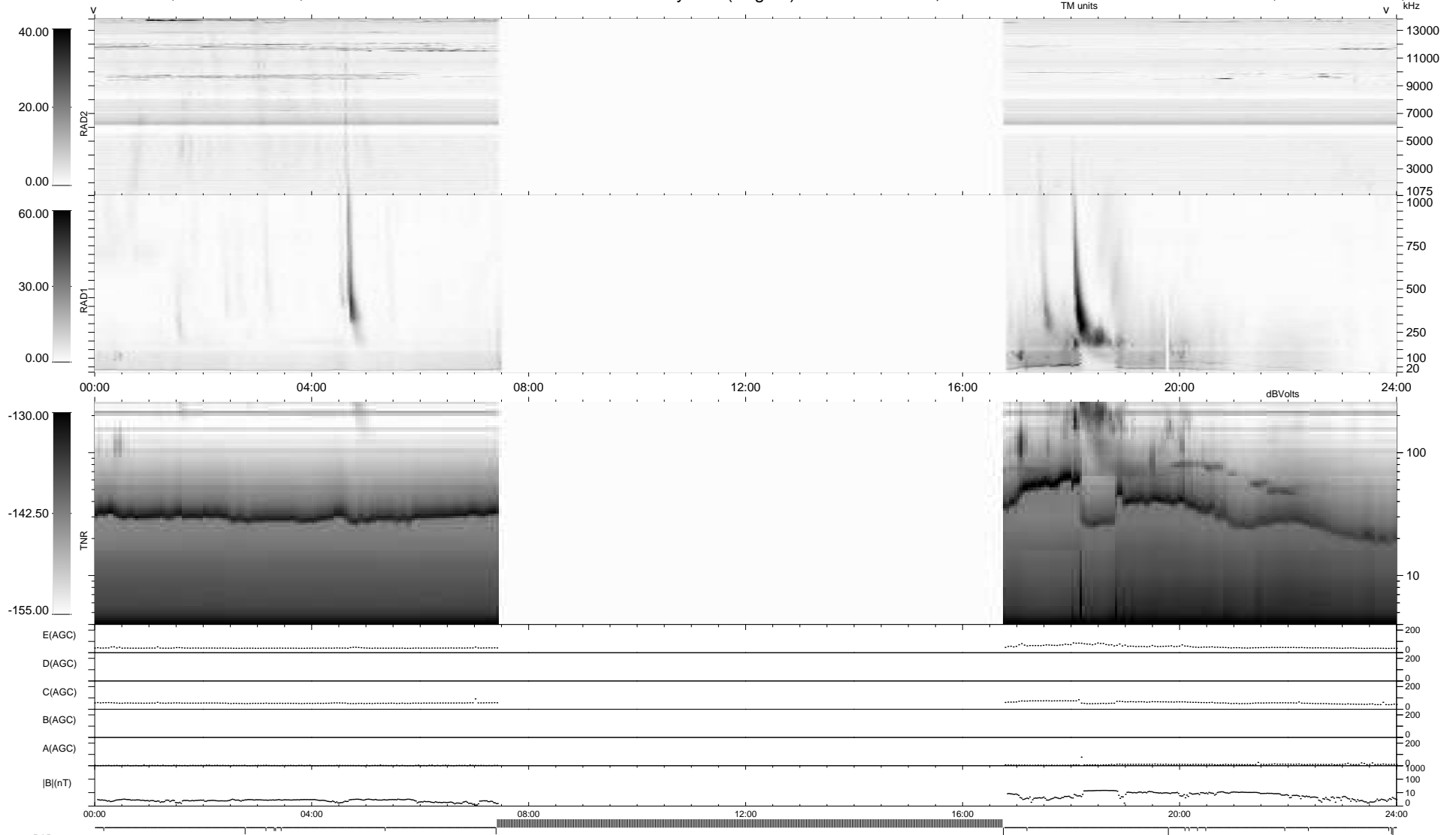
20 bad + 554 good MF/939MF projected (58%) - 365 missing MFs
 Avg interval = 180 secs
 Re = 228.96 (208.61, -94.32, -2.99 GSE)

windlib 2.0b

LZ version = v01

WIND/WAVES Summary Plot (Page 1) for 30-SEP-2021, DOY = 273

DAILY 2021-10-01 16:20:05
 Re = 227.64 (207.89, -92.69, -3.38 GSE)



```

RAD2
Antenna Ey .....
Mode LIN(1) .....
SUM/SEP SEP .....
Toggle OFF .....

RAD1
Antenna Ex .....
Mode LIS(2,4) .....
SUM/SEP SUM .....
Toggle OFF .....

TNR
Antenna ExEy .....
Mode A-32 .....
Sweep ACE .....
  
```