

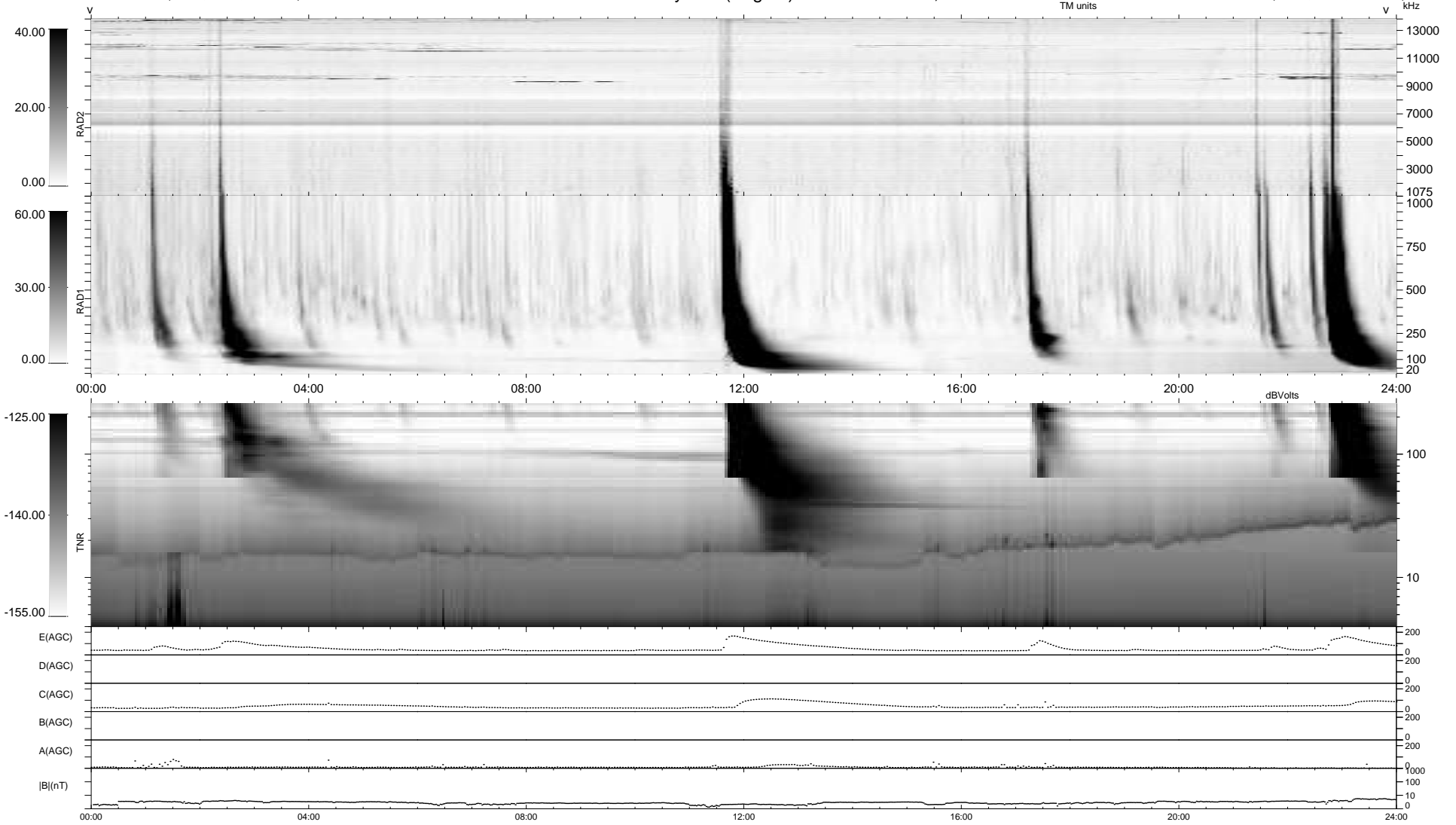
12 bad + 928 good MF/940MF projected (98%) - 0 missing MFs
 Avg interval = 180 secs
 Re = -234.01 (211.86, -99.37, -1.38 GSE)

windlib 2.0b

LZ version = v01

WIND/WAVES Summary Plot (Page 1) for 26-SEP-2021, DOY = 269

DAILY 2021-09-27 10:20:04
 Re = 232.79 (210.99, -98.34, -1.78 GSE)



RAD2
 Antenna Ey
 Mode LIN(1)
 SUM/SEP SEP
 Toggle OFF
 RAD1
 Antenna Ex
 Mode LIS(2,4)
 SUM/SEP SUM
 Toggle OFF
 TNR
 Antenna ExEy
 Mode A-32
 Sweep ACE