

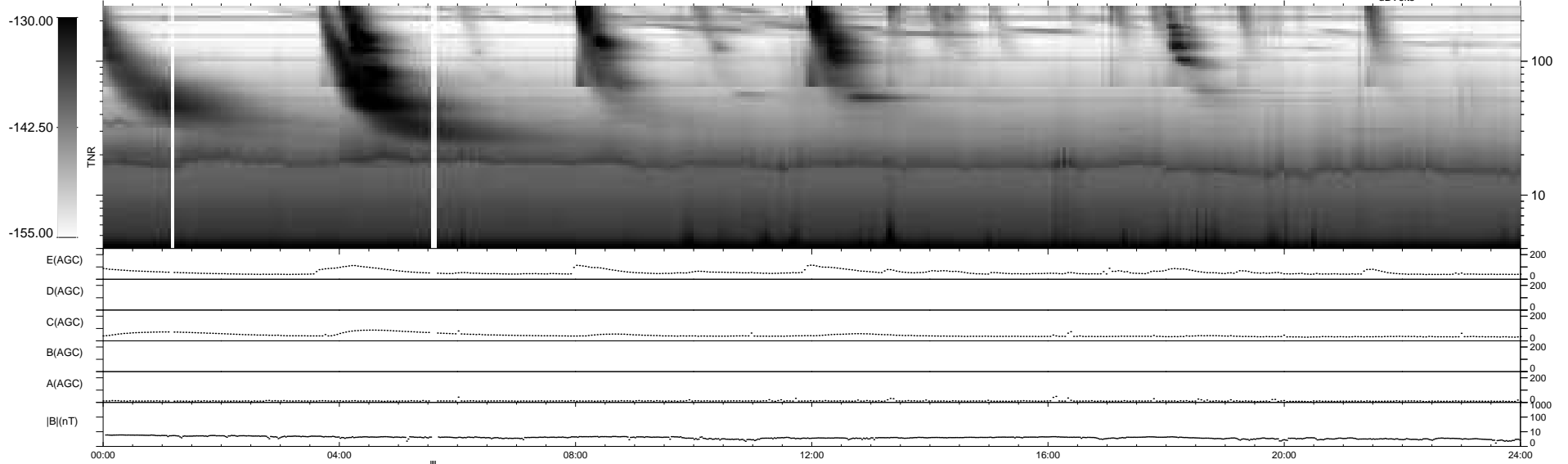
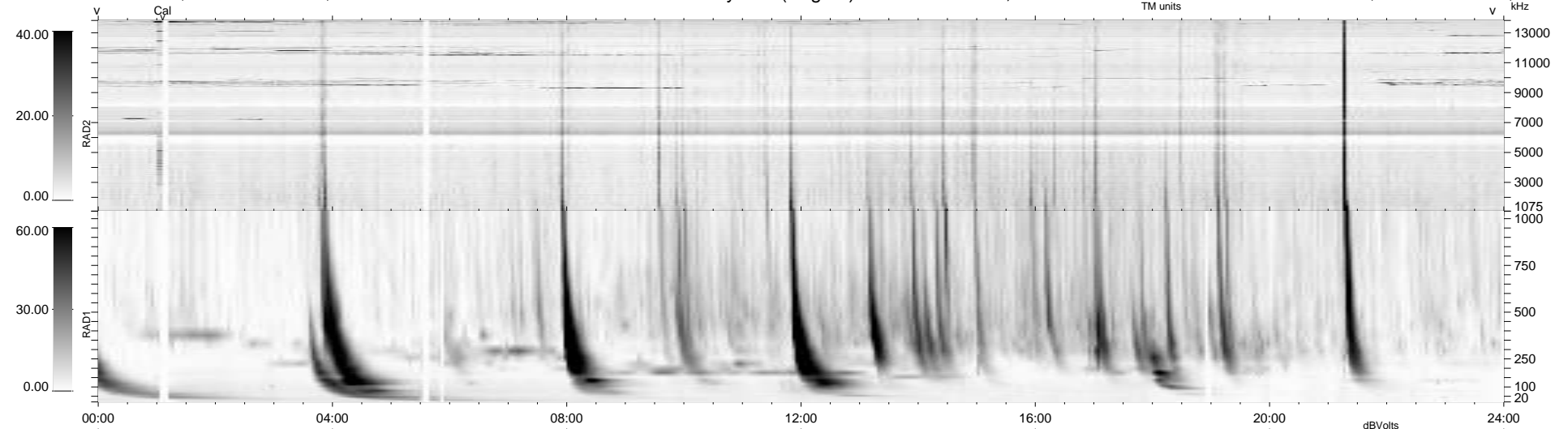
16 bad + 919 good MF/939MF projected (97%) - 4 missing MFs  
 Avg interval = 180 secs  
 Re = 235.22 (212.78, -100.26, -0.98 GSE)

windlib 2.0b

LZ version = v01

### WIND/WAVES Summary Plot (Page 1) for 25-SEP-2021, DOY = 268

DAILY 2021-09-26 18:20:05  
 Re = 234.02 (211.87, -99.37, -1.38 GSE)



```

RAD2
Antenna Ey .....
Mode LIN(1) .....
SUM/SEP SEP .....
Toggle OFF .....

RAD1
Antenna Ex .....
Mode LIS(2,4) .....
SUM/SEP SUM .....
Toggle OFF .....

TNR
Antenna ExEy .....
Mode A-32 .....
Sweep ACE .....
  
```