

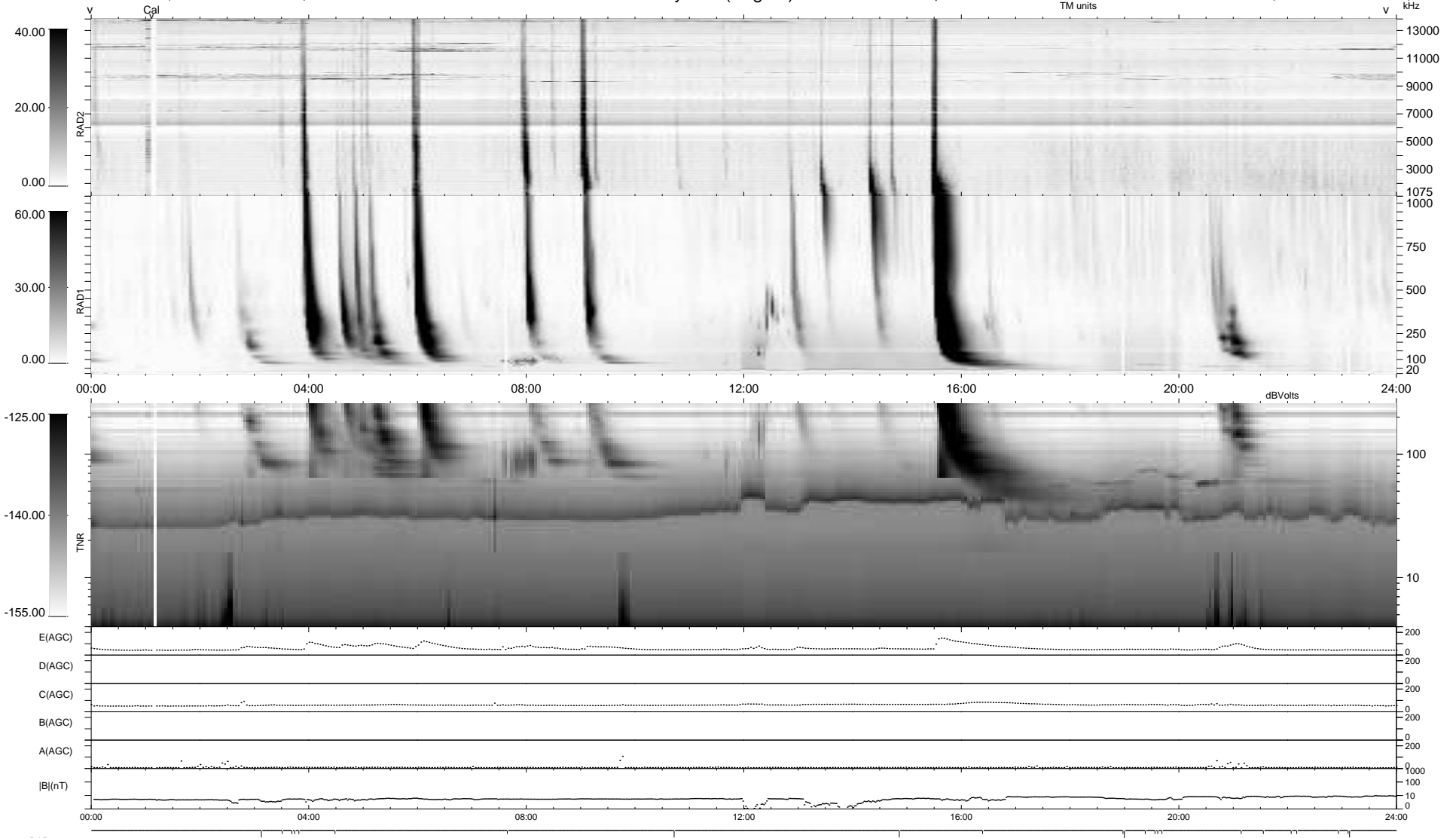
23 bad + 916 good MF/939MF projected (97%) - 0 missing MFs  
 Avg interval = 180 secs  
 Re = 237.59 (214.77, -101.60, -0.23 GSE)

windlib 2.0b

LZ version = v01

### WIND/WAVES Summary Plot (Page 1) for 23-SEP-2021, DOY = 266

DAILY 2021-09-24 10:20:04  
 Re = 236.42 (213.76, -101.01, -0.57 GSE)



```

RAD2
Antenna Ey .....
Mode LIN(1) .....
SUM/SEP SEP .....
Toggle OFF .....

RAD1
Antenna Ex .....
Mode LIS(2,4) .....
SUM/SEP SUM .....
Toggle OFF .....

TNR
Antenna ExEy .....
Mode A-32 .....
Sweep ACE .....
  
```