

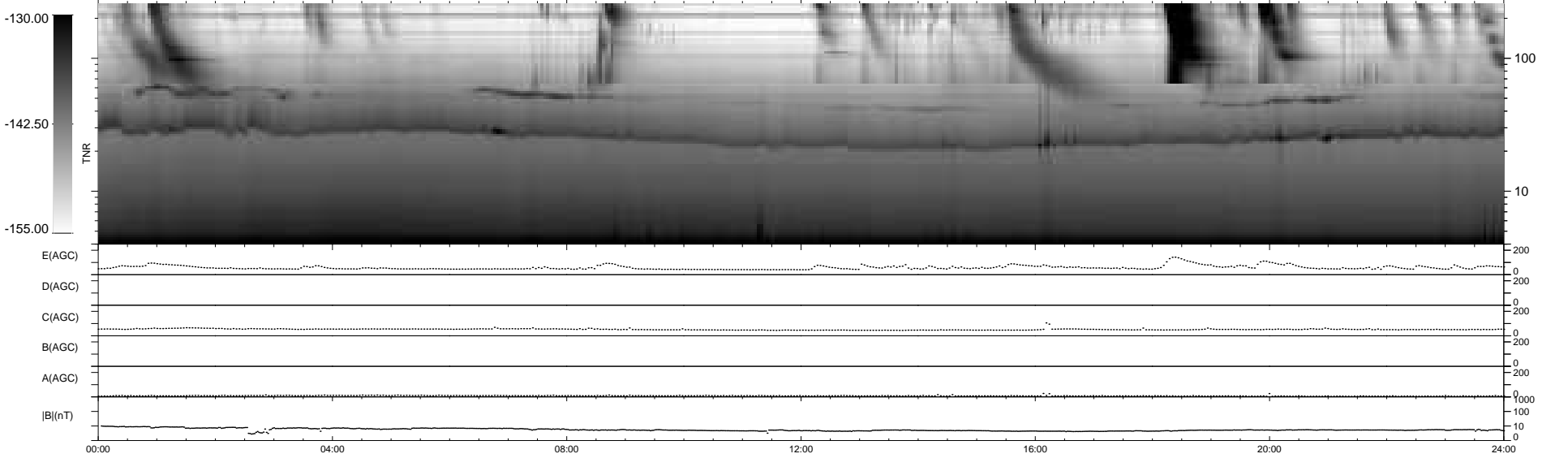
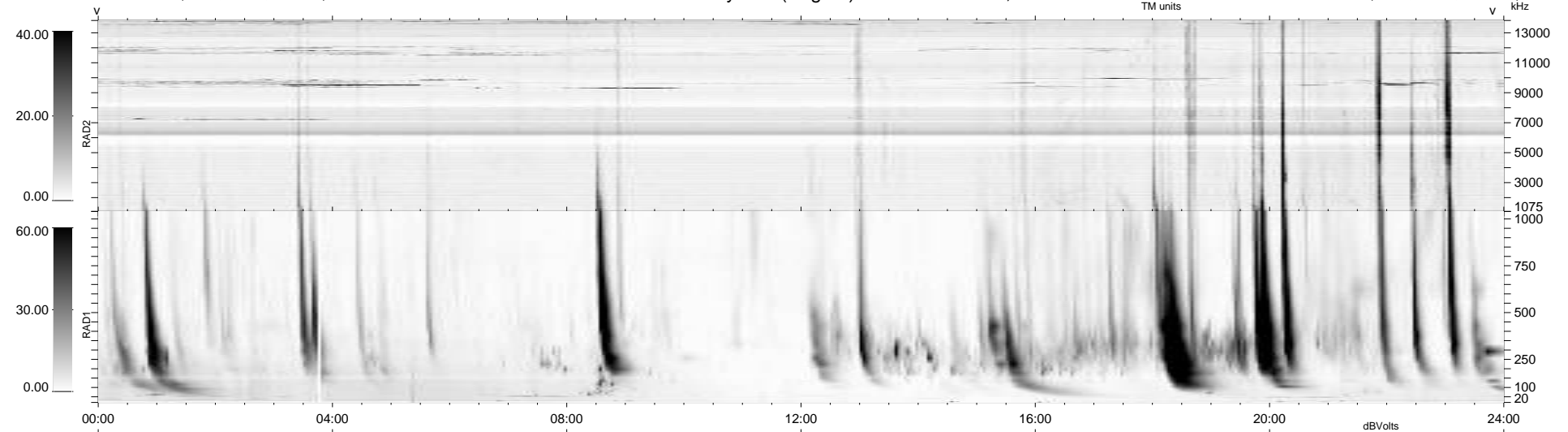
15 bad + 924 good MF/939MF projected (98%) - 0 missing MFs  
 Avg interval = 180 secs  
 Re = 238.77 (215.85, -102.07, 0.28 GSE)

windlib 2.0b

LZ version = v01

### WIND/WAVES Summary Plot (Page 1) for 22-SEP-2021, DOY = 265

DAILY 2021-09-23 10:20:05  
 Re = 237.60 (214.78, -101.61, -0.23 GSE)



RAD2  
 Antenna Ey .....  
 Mode LIN(1) .....  
 SUM/SEP SEP .....  
 Toggle OFF .....  
 RAD1  
 Antenna Ex .....  
 Mode LIS(2,4) .....  
 SUM/SEP SUM .....  
 Toggle OFF .....  
 TNR  
 Antenna ExEy .....  
 Mode A-32 .....  
 Sweep ACE .....