

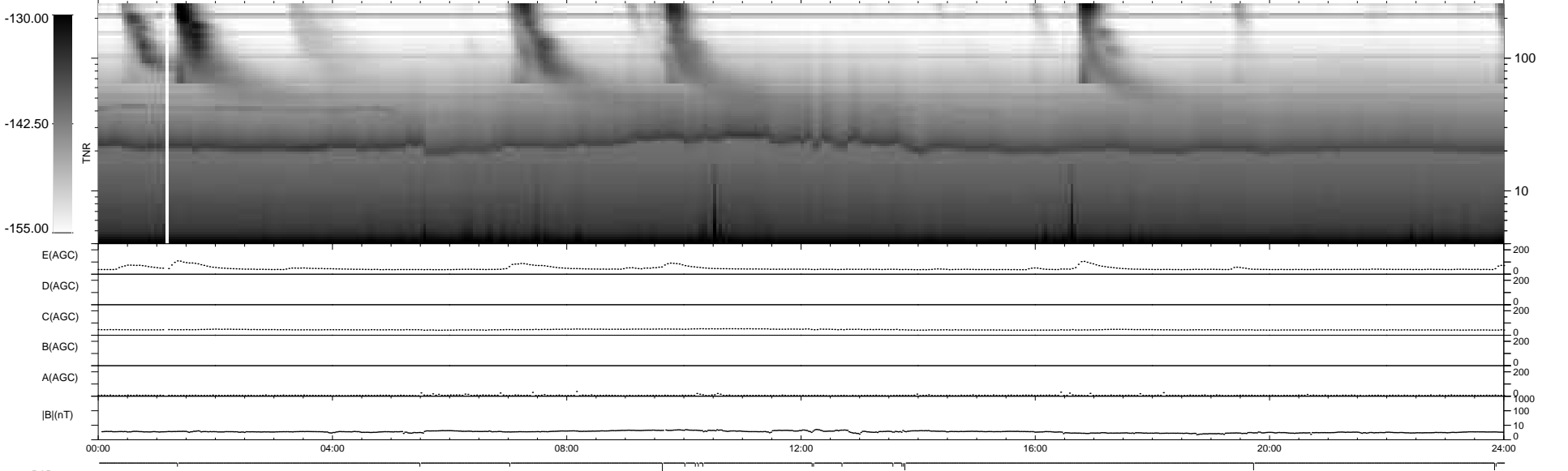
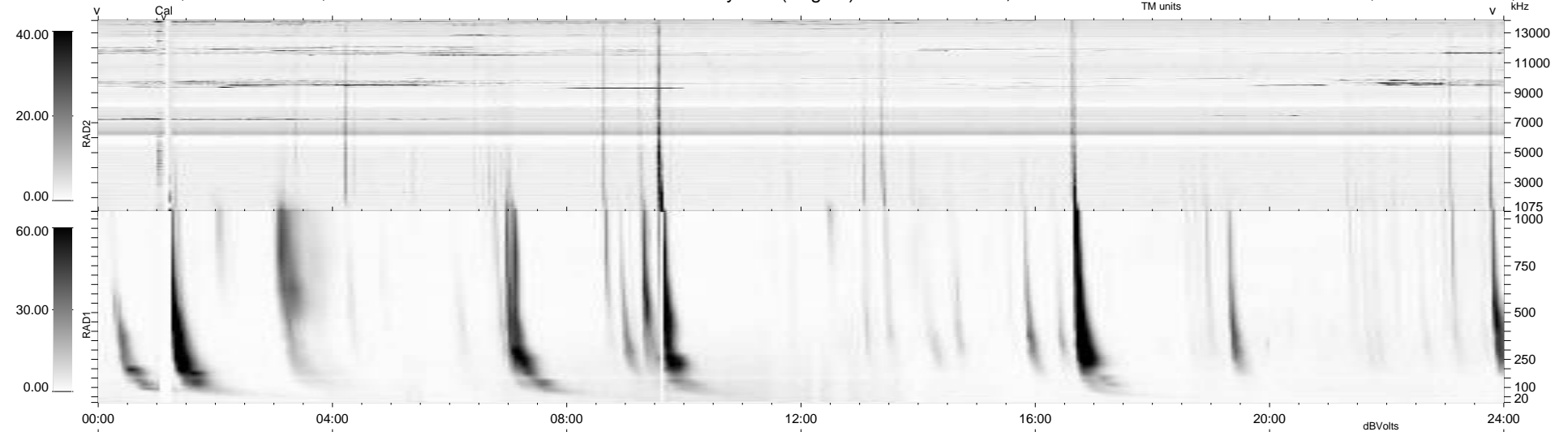
18 bad + 921 good MF/939MF projected (98%) - 0 missing MFs
Avg interval = 180 secs
Re = 242.28 (219.42, -102.72, 1.51 GSE)

windlib 2.0b

LZ version = v01

WIND/WAVES Summary Plot (Page 1) for 19-SEP-2021, DOY = 262

DAILY 2021-09-20 16:20:05
Re = 241.12 (218.18, -102.62, 1.10 GSE)



RAD2
Antenna Ey
Mode LIN(1)
SUM/SEP SEP
Toggle OFF
RAD1
Antenna Ex
Mode LIS(2,4)
SUM/SEP SUM
Toggle OFF
TNR
Antenna ExEy
Mode A-32
Sweep ACE