

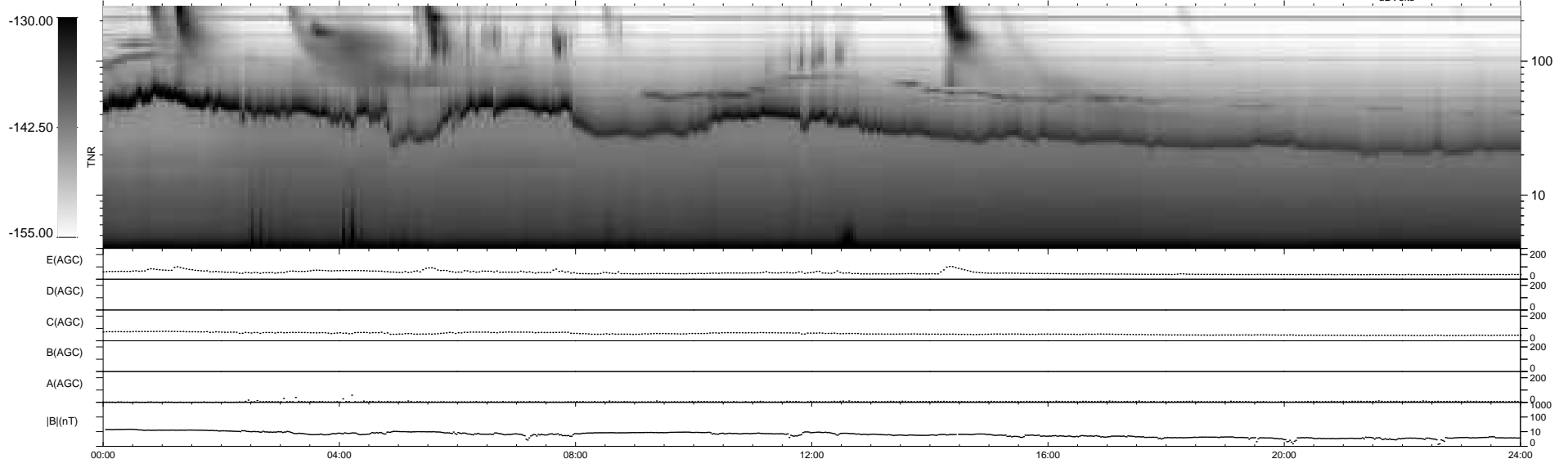
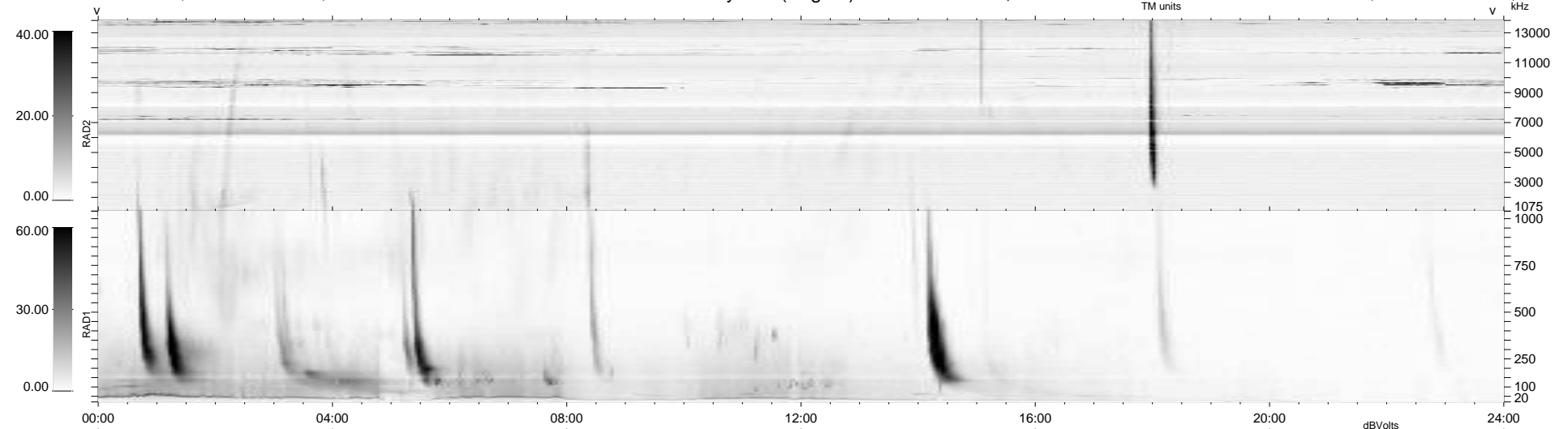
18 bad + 922 good MF/940MF projected (98%) - 0 missing MFs
 Avg interval = 180 secs
 Re = 243.45 (220.71, -102.70, 1.93 GSE)

windlib 2.0b

LZ version = v01

WIND/WAVES Summary Plot (Page 1) for 18-SEP-2021, DOY = 261

DAILY 2021-09-19 18:20:04
 Re = 242.28 (219.43, -102.72, 1.52 GSE)



RAD2
 Antenna Ey
 Mode LIN(1)
 SUM/SEP SEP
 Toggle OFF
 RAD1
 Antenna Ex
 Mode LIS(2,4)
 SUM/SEP SUM
 Toggle OFF
 TNR
 Antenna ExEy
 Mode A-32
 Sweep ACE