

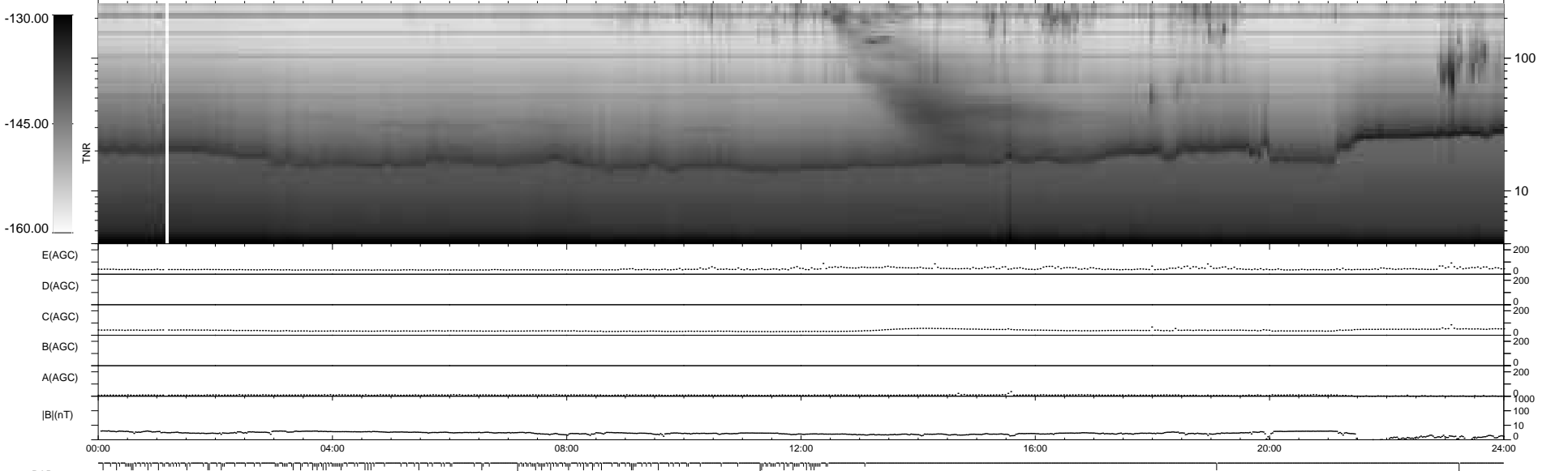
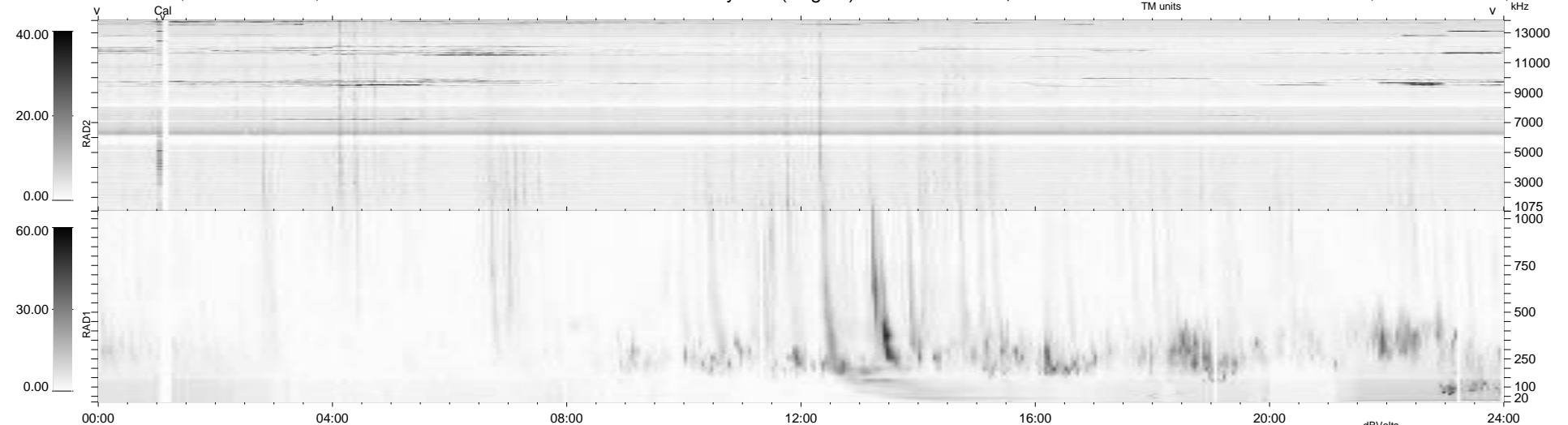
176 bad + 763 good MF/939MF projected (81%) - 0 missing MFs
 Avg interval = 180 secs
 Re = 253.42 (233.46, -98.44, 5.65 GSE)

windlib 2.0b

LZ version = v01

WIND/WAVES Summary Plot (Page 1) for 09-SEP-2021, DOY = 252

DAILY 2021-09-10 16:20:05
 Re = 252.45 (232.06, -99.26, 5.26 GSE)



RAD2
 Antenna Ey
 Mode LIN(1)
 SUM/SEP SEP
 Toggle OFF
 RAD1
 Antenna Ex
 Mode LIS(2,4)
 SUM/SEP SUM
 Toggle OFF
 TNR
 Antenna ExEy
 Mode A-32
 Sweep ACE