

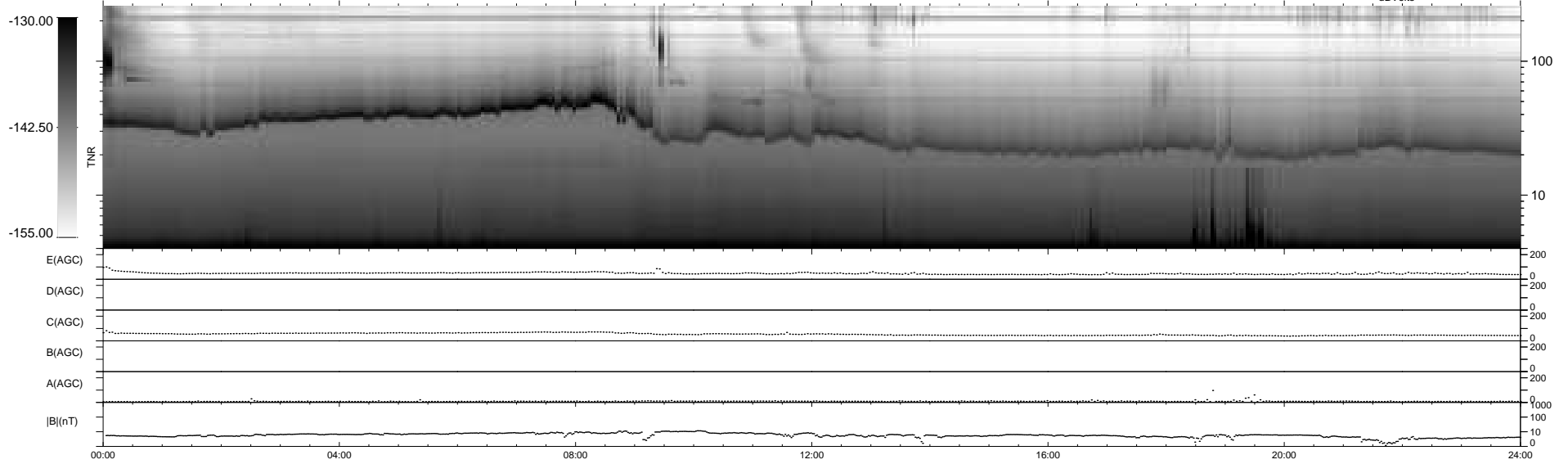
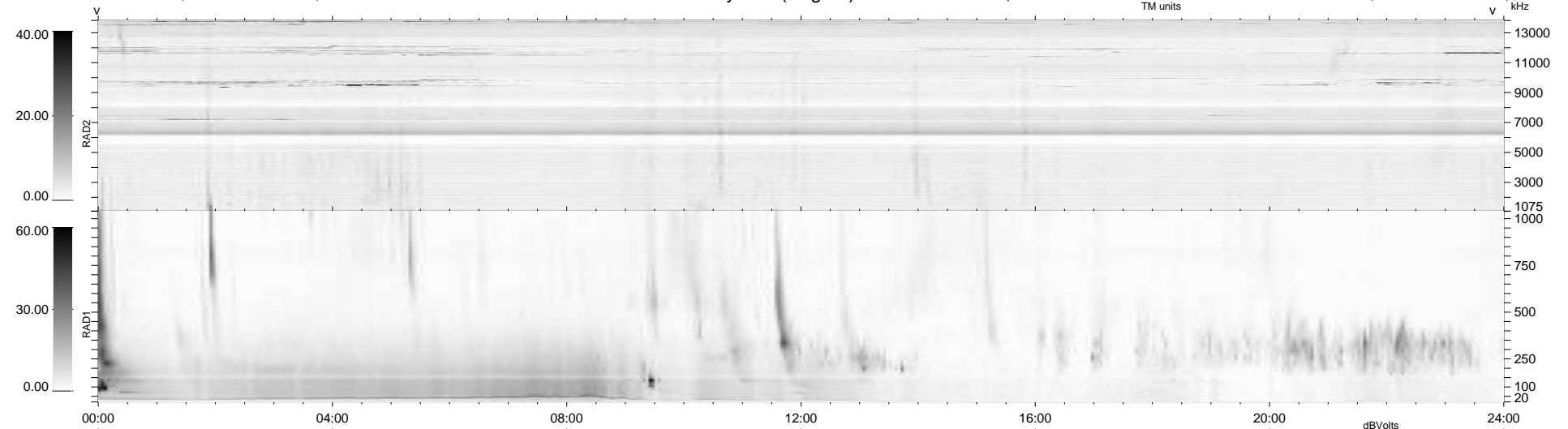
36 bad + 903 good MF/939MF projected (96%) - 0 missing MFs
 Avg interval = 180 secs
 Re = 254.34 (234.83, -97.51, 6.04 GSE)

windlib 2.0b

LZ version = v01

WIND/WAVES Summary Plot (Page 1) for 08-SEP-2021, DOY = 251

DAILY 2021-09-09 18:20:05
 Re = 253.43 (233.47, -98.43, 5.65 GSE)



RAD2 Antenna Ey
 Mode LIN(1)
 SUM/SEP SEP
 Toggle OFF
 RAD1 Antenna Ex
 Mode LIS(2,4)
 SUM/SEP SUM
 Toggle OFF
 TNR Antenna ExEy
 Mode A-32
 Sweep ACE