

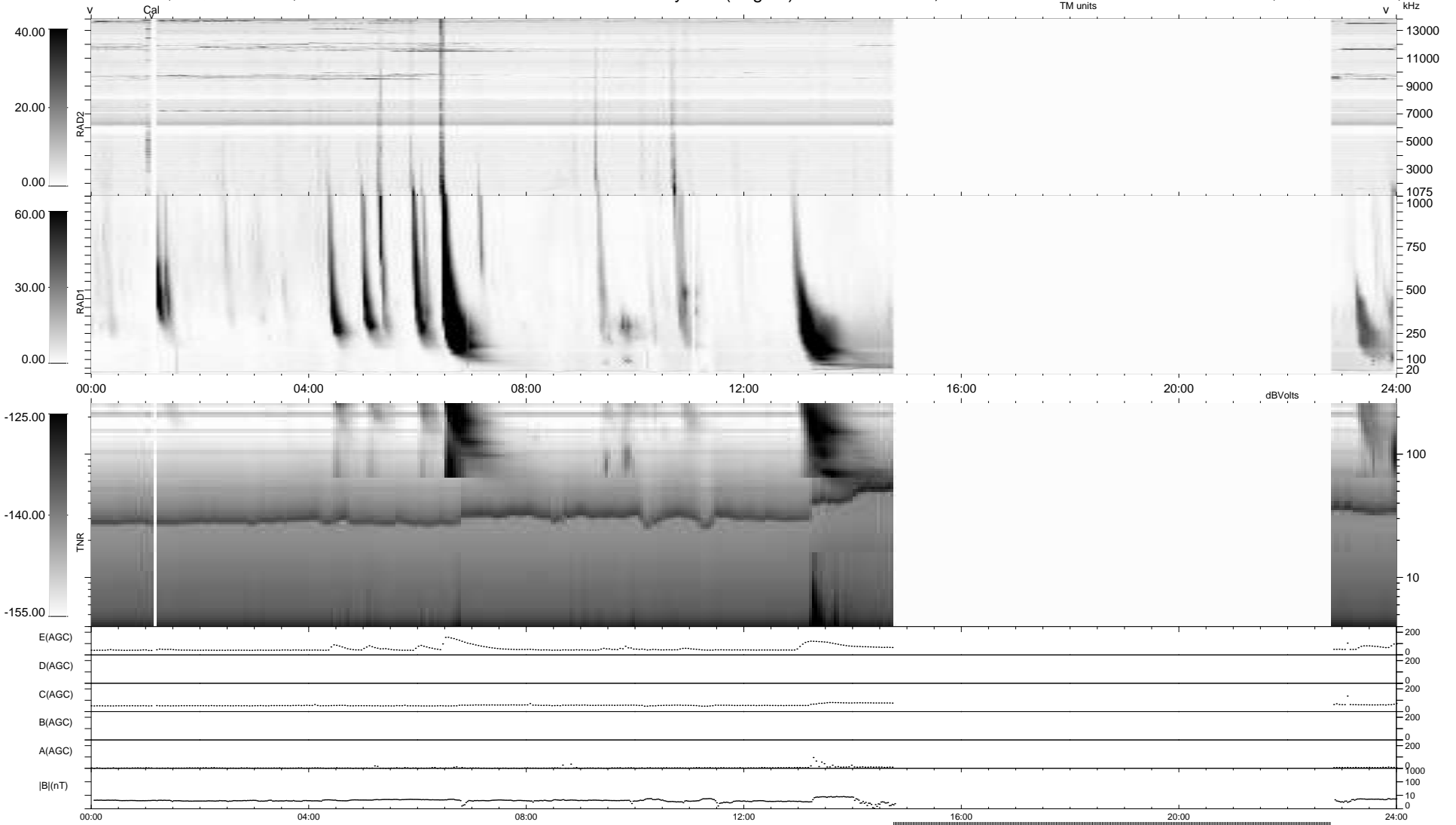
14 bad + 610 good MF/939MF projected (64%) - 315 missing MFs
 Avg interval = 180 secs
 Re = - 255.19 (236.17, -96.48, 6.41 GSE)

windlib 2.0b

LZ version = v01

WIND/WAVES Summary Plot (Page 1) for 07-SEP-2021, DOY = 250

DAILY 2021-09-09 02:20:05
 Re = 254.35 (234.84, -97.51, 6.04 GSE)



```

RAD2
Antenna Ey .....
Mode LIN(1) .....
SUM/SEP SEP .....
Toggle OFF .....

RAD1
Antenna Ex .....
Mode LIS(2,4) .....
SUM/SEP SUM .....
Toggle OFF .....

TNR
Antenna ExEy .....
Mode A-32 .....
Sweep ACE .....
  
```