

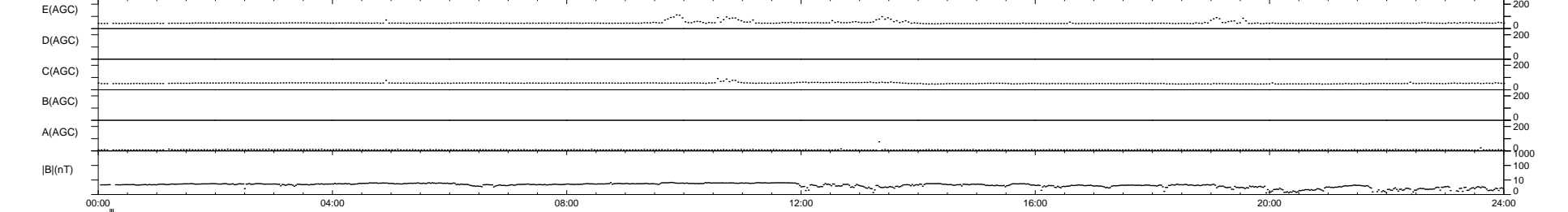
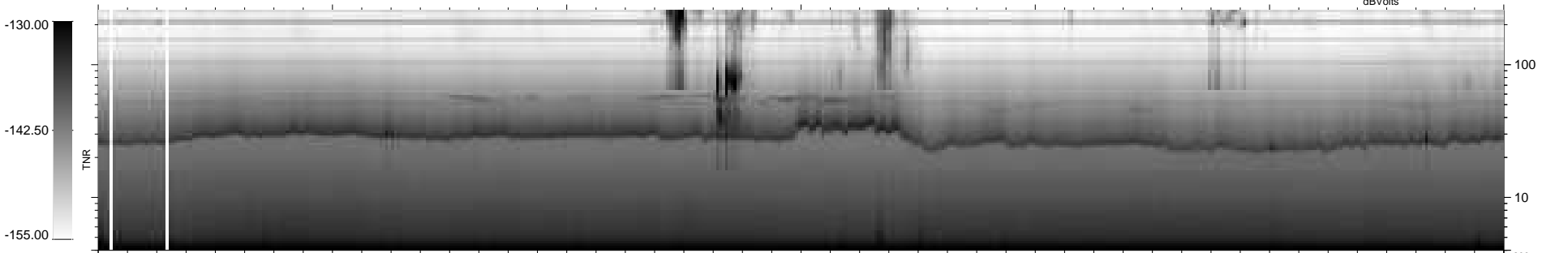
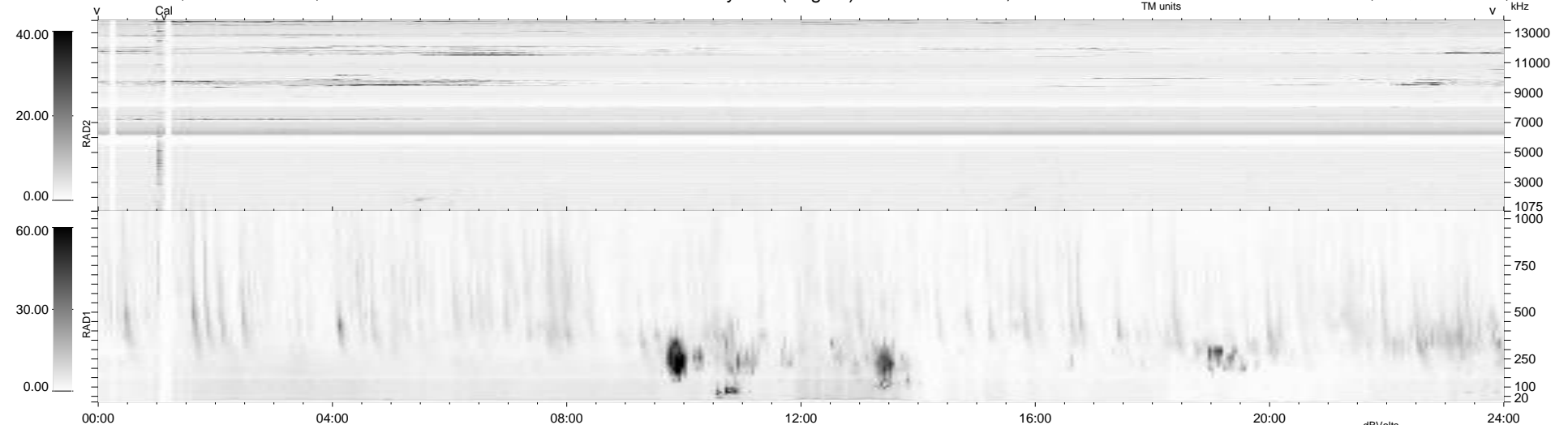
18 bad + 919 good MF/940MF projected (97%) - 3 missing MFs  
 Avg interval = 180 secs  
 Re = 257.92 (241.14, -91.18, 7.82 GSE)

windlib 2.0b

LZ version = v01

### WIND/WAVES Summary Plot (Page 1) for 03-SEP-2021, DOY = 246

DAILY 2021-09-04 10:20:06  
 Re = 257.35 (239.96, -92.68, 7.48 GSE)



```

RAD2
Antenna Ey .....
Mode LIN(1) .....
SUM/SEP SEP .....
Toggle OFF .....

RAD1
Antenna Ex .....
Mode LIS(2,4) .....
SUM/SEP SUM .....
Toggle OFF .....

TNR
Antenna ExEy .....
Mode A-32 .....
Sweep ACE .....
  
```