

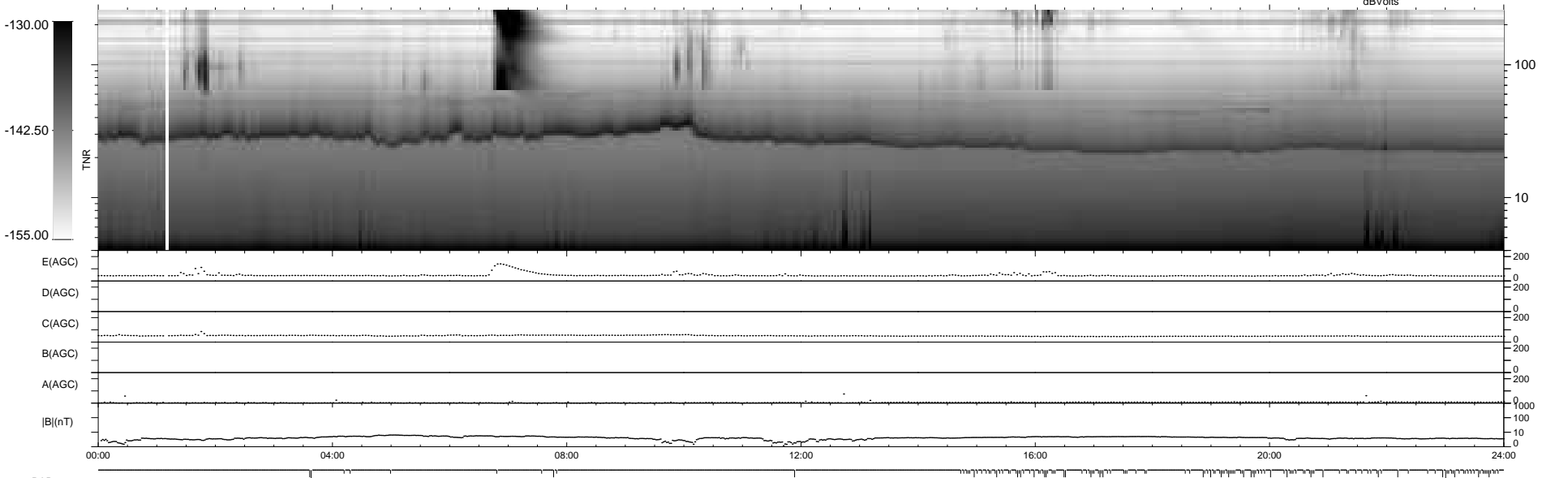
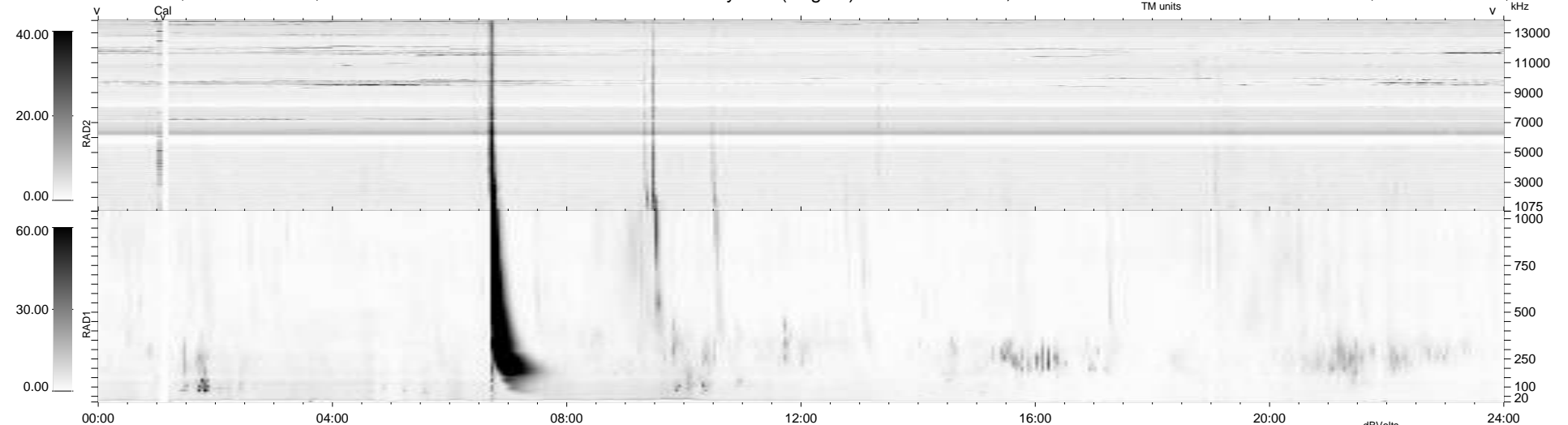
143 bad + 796 good MF/939MF projected (84%) - 0 missing MFs
 Avg interval = 180 secs
 Re = 258.91 (243.42, -87.78, 8.46 GSE)

windlib 2.0b

LZ version = v01

WIND/WAVES Summary Plot (Page 1) for 01-SEP-2021, DOY = 244

DAILY 2021-09-02 10:20:05
 Re = 258.45 (242.31, -89.54, 8.15 GSE)



RAD2
 Antenna Ey
 Mode LIN(1)
 SUM/SEP SEP
 Toggle OFF
 RAD1
 Antenna Ex
 Mode LIS(2,4)
 SUM/SEP SUM
 Toggle OFF
 TNR
 Antenna ExEy
 Mode A-32
 Sweep ACE