

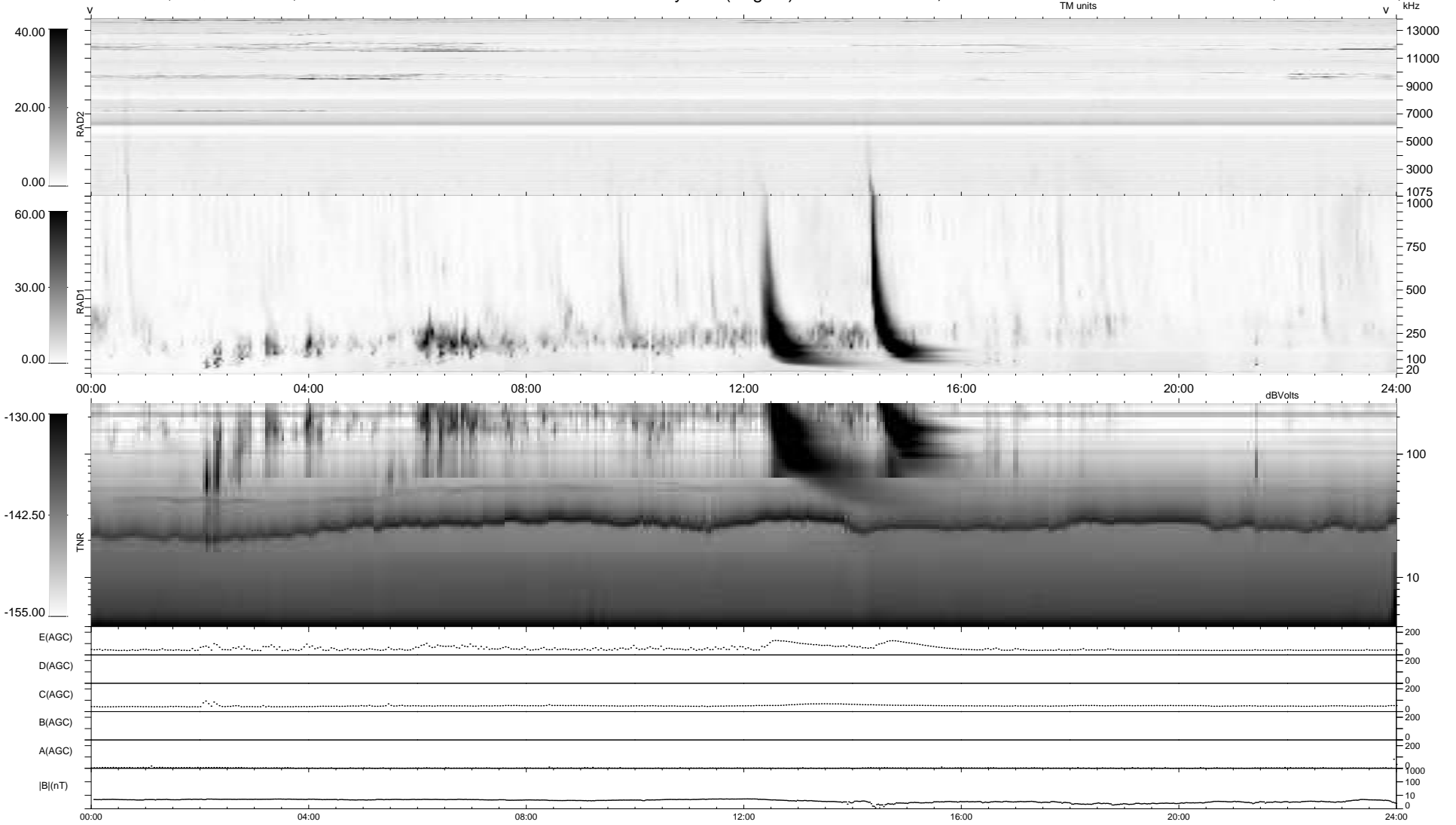
18 bad + 921 good MF/939MF projected (98%) - 0 missing MFs  
Avg interval = 180 secs  
Re = 259.32 (244.53, -85.89, 8.77 GSE)

windlib 2.0b

LZ version = v02

### WIND/WAVES Summary Plot (Page 1) for 31-AUG-2021, DOY = 243

DAILY 2021-09-02 11:20:14  
Re = 258.91 (243.43, -87.77, 8.46 GSE)



RAD2  
Antenna Ey  
Mode LIN(1)  
SUM/SEP SEP  
Toggle OFF

RAD1  
Antenna Ex  
Mode LIS(2,4)  
SUM/SEP SUM  
Toggle OFF

TNR  
Antenna ExEy  
Mode A-32  
Sweep ACE