

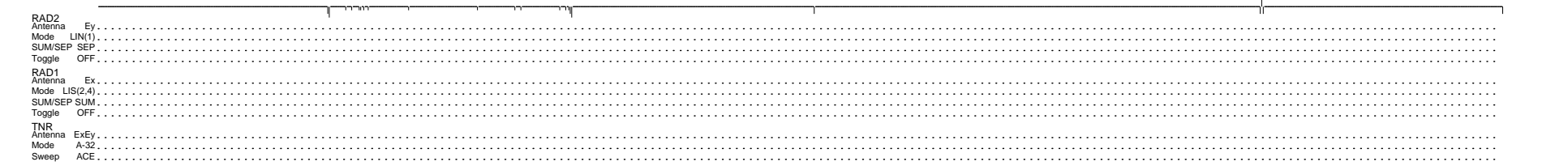
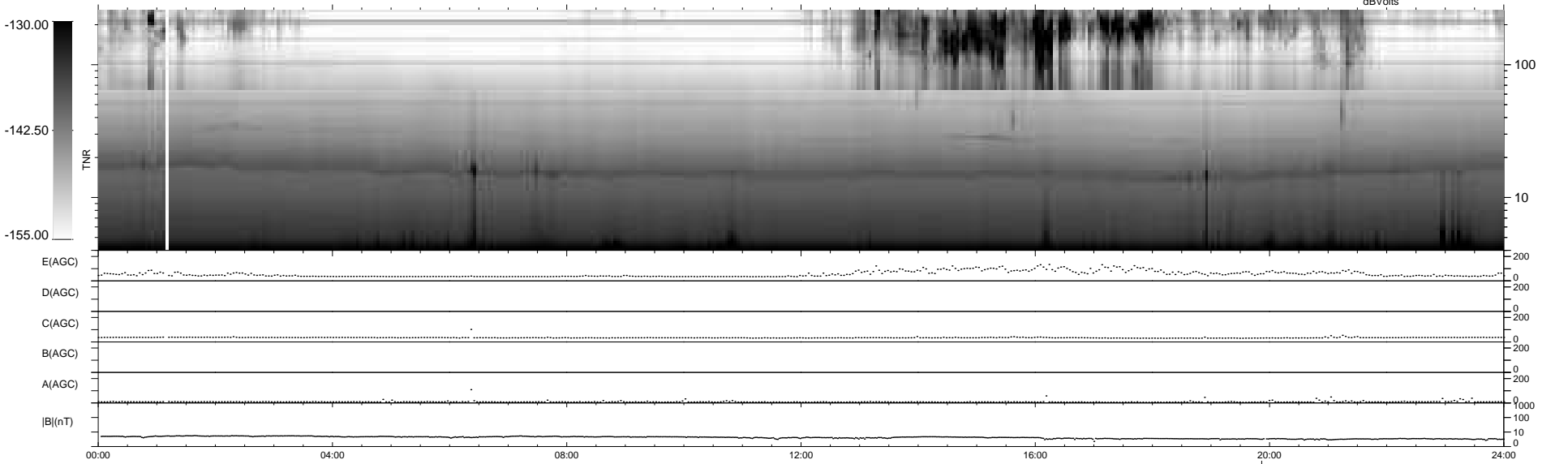
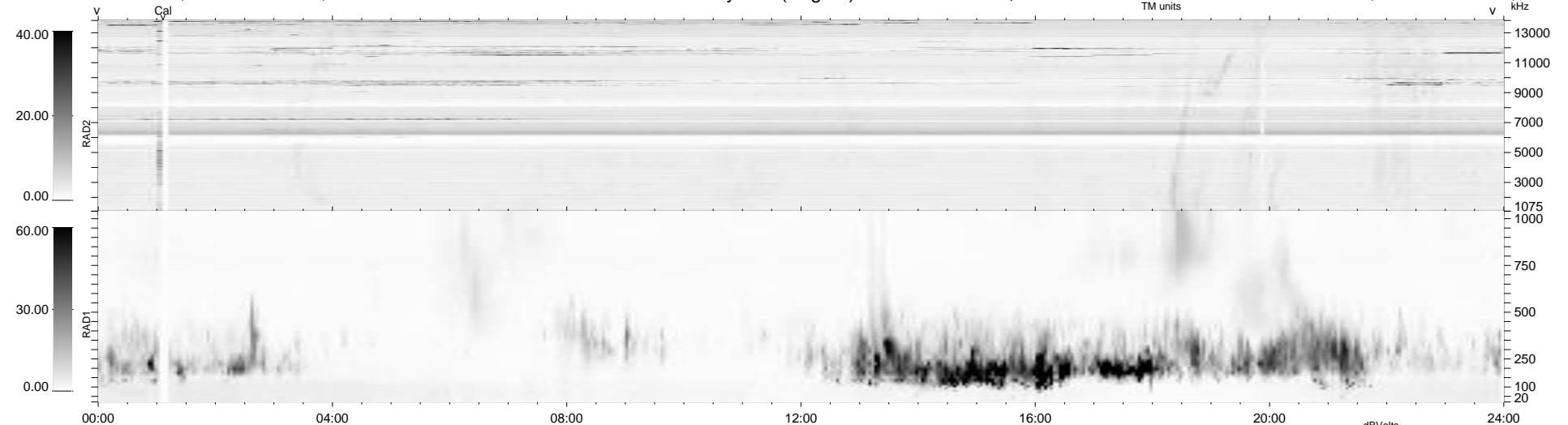
21 bad + 917 good MF/939MF projected (97%) - 1 missing MF
 Avg interval = 180 secs
 Re = 263.87 (259.66, -45.26, 12.44 GSE)

windlib 2.0b

LZ version = v01

WIND/WAVES Summary Plot (Page 1) for 16-AUG-2021, DOY = 228

DAILY 2021-08-17 10:20:06
 Re = 263.51 (258.75, -48.37, 12.25 GSE)



RAD2
 Antenna Ey
 Mode LIN(1)
 SUM/SEP SEP
 Toggle OFF
 RAD1
 Antenna Ex
 Mode LIS(2,4)
 SUM/SEP SUM
 Toggle OFF
 TNR
 Antenna ExEy
 Mode A-32
 Sweep ACE