

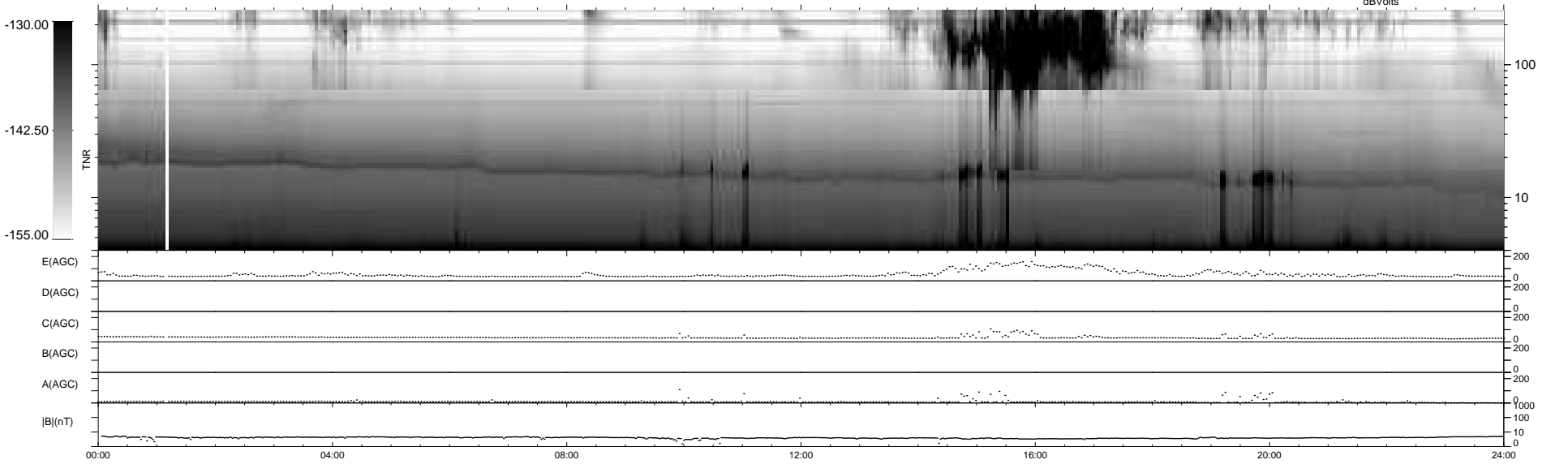
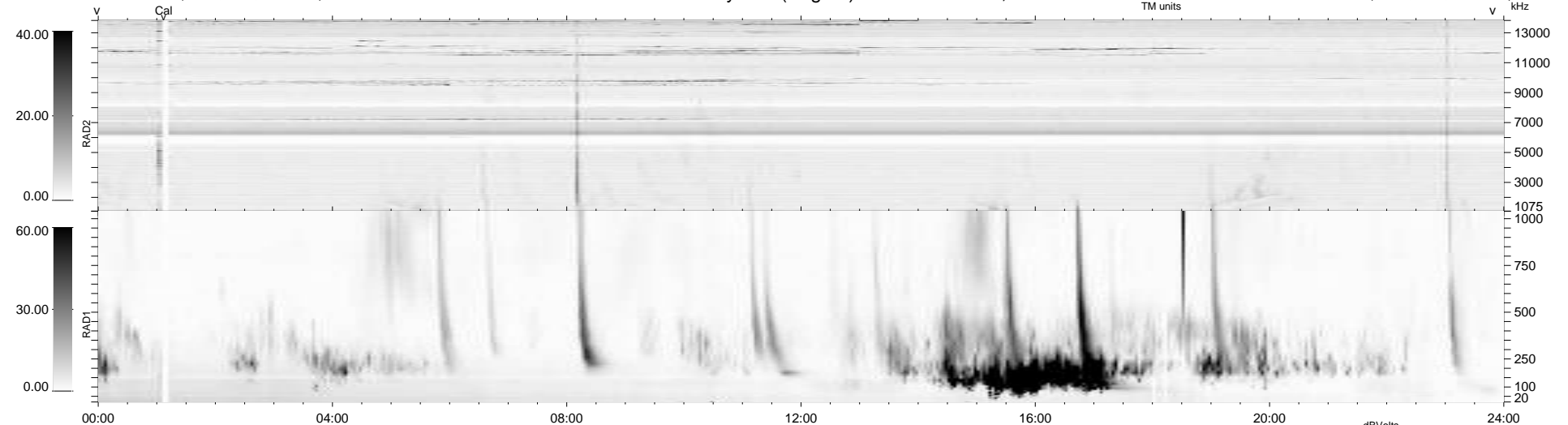
110 bad + 829 good MF/939MF projected (88%) - 0 missing MFs  
 Avg interval = 180 secs  
 Re = 264.63 (260.89, 42.52, 12.61 GSE)

windlib 2.0b

LZ version = v01

### WIND/WAVES Summary Plot (Page 1) for 21-JUL-2021, DOY = 202

DAILY 2021-07-22 16:20:04  
 Re = 264.61 (261.38, 39.19, 12.74 GSE)



E(AGC) 200  
 D(AGC) 200  
 C(AGC) 200  
 B(AGC) 200  
 A(AGC) 200  
 |B|(nT) 1000  
 100  
 10  
 0

00:00 04:00 08:00 12:00 16:00 20:00 24:00

```

RAD2
Antenna Ey .....
Mode LIN(1) .....
SUM/SEP SEP .....
Toggle OFF .....

RAD1
Antenna Ex .....
Mode LIS(2,4) .....
SUM/SEP SUM .....
Toggle OFF .....

TNR
Antenna ExEy .....
Mode A-32 .....
Sweep ACE .....
  
```