

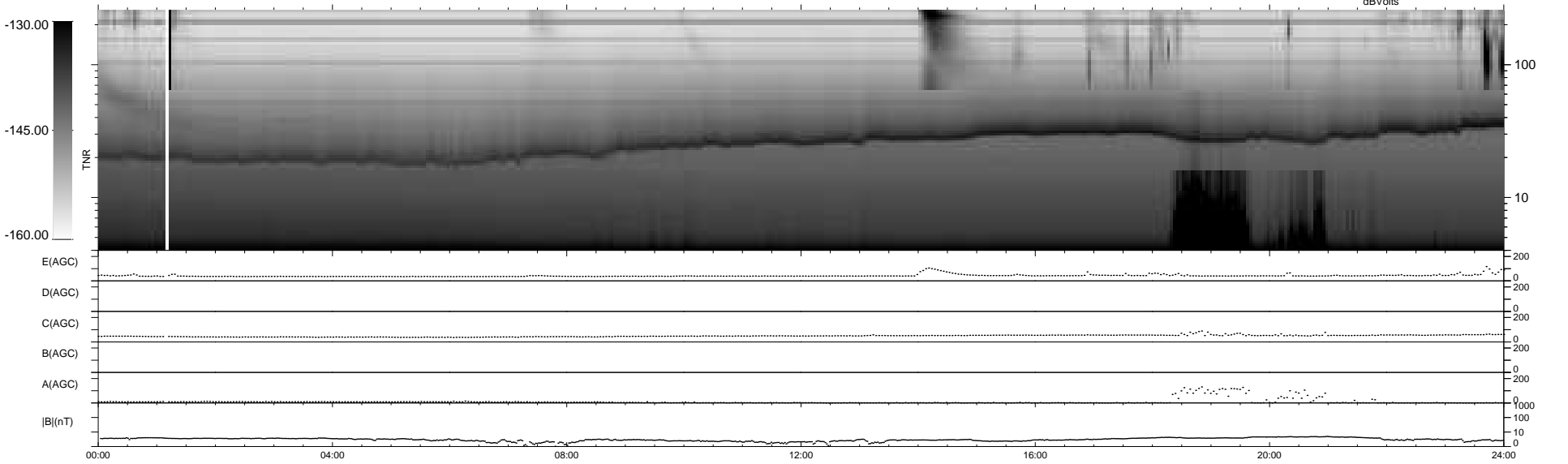
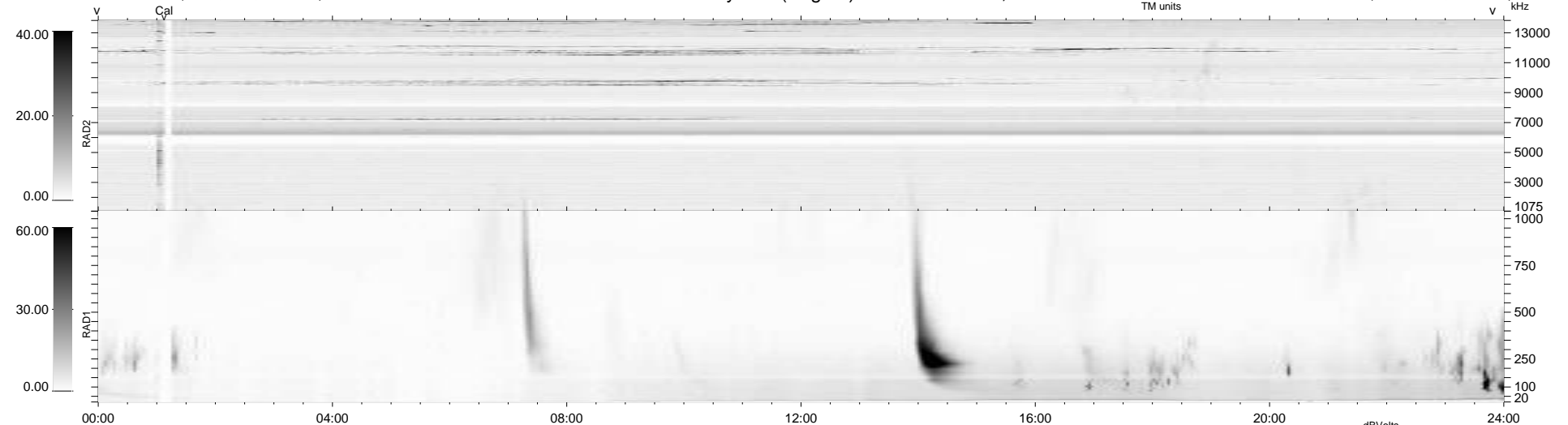
20 bad + 920 good MF/940MF projected (97%) - 0 missing MFs
 Avg interval = 180 secs
 Re = 263.90 (253.89, 71.19, 10.62 GSE)

windlib 2.0b

LZ version = v01

WIND/WAVES Summary Plot (Page 1) for 11-JUL-2021, DOY = 192

DAILY 2021-07-12 06:20:04
 Re = 264.17 (254.83, 68.76, 10.88 GSE)



RAD2
 Antenna Ey
 Mode LIN(1)
 SUM/SEP SEP
 Toggle OFF

RAD1
 Antenna Ex
 Mode LIS(2,4)
 SUM/SEP SUM
 Toggle OFF

TNR
 Antenna ExEy
 Mode A-32
 Sweep ACE