

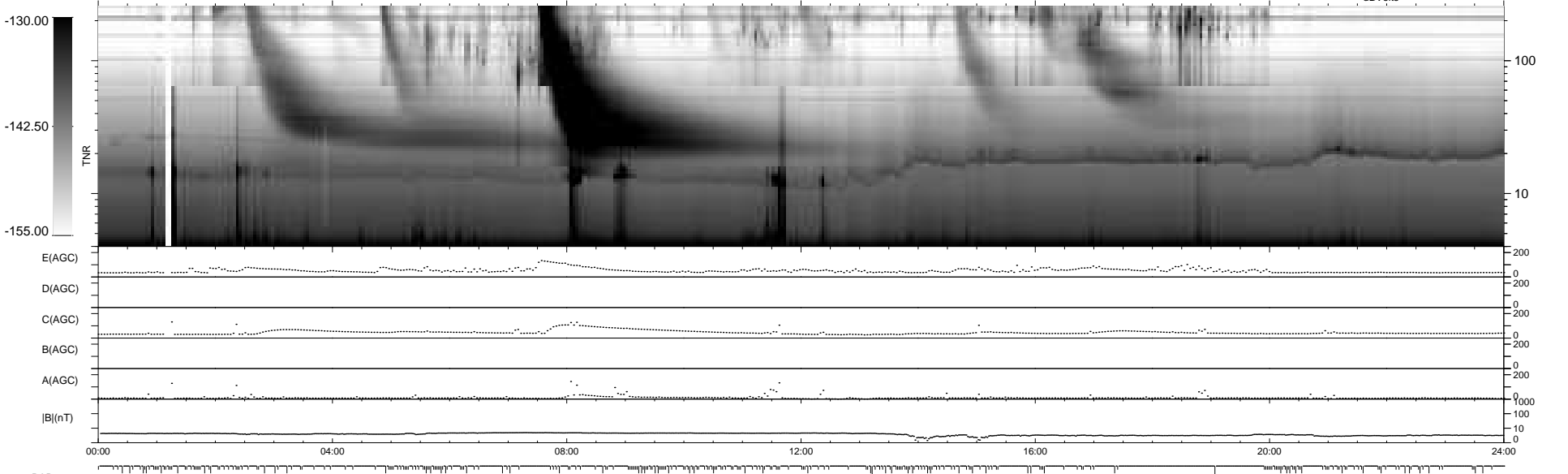
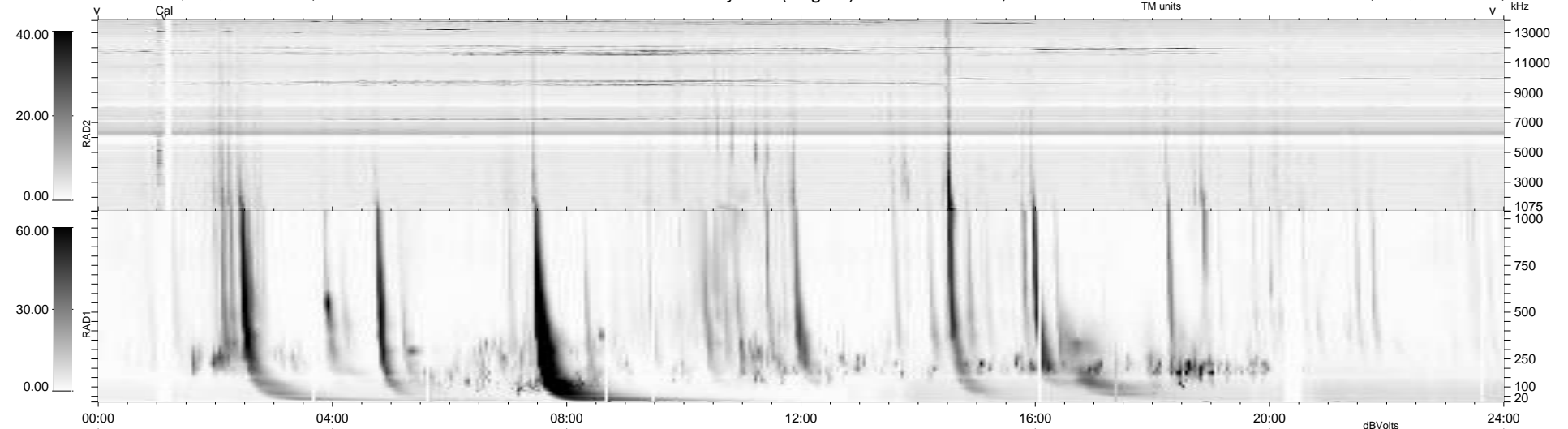
295 bad + 645 good MF/940MF projected (68%) - 0 missing MFs  
 Avg interval = 180 secs  
 Re = 259.86 (244.40, 87.91, 8.17 GSE)

windlib 2.0b

LZ version = v01

### WIND/WAVES Summary Plot (Page 1) for 03-JUL-2021, DOY = 184

DAILY 2021-07-04 08:20:04  
 Re = 260.50 (245.72, 86.09, 8.50 GSE)



RAD2  
 Antenna Ey  
 Mode LIN(1)  
 SUM/SEP SEP  
 Toggle OFF

RAD1  
 Antenna Ex  
 Mode LIS(2,4)  
 SUM/SEP SUM  
 Toggle OFF

TNR  
 Antenna ExEy  
 Mode A-32  
 Sweep ACE