

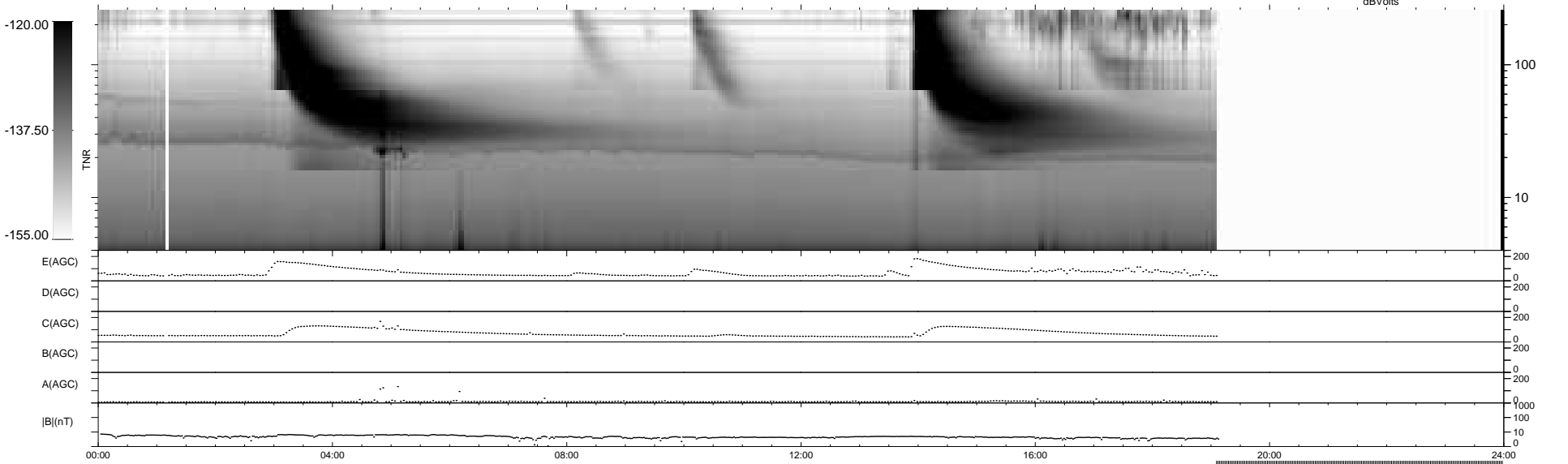
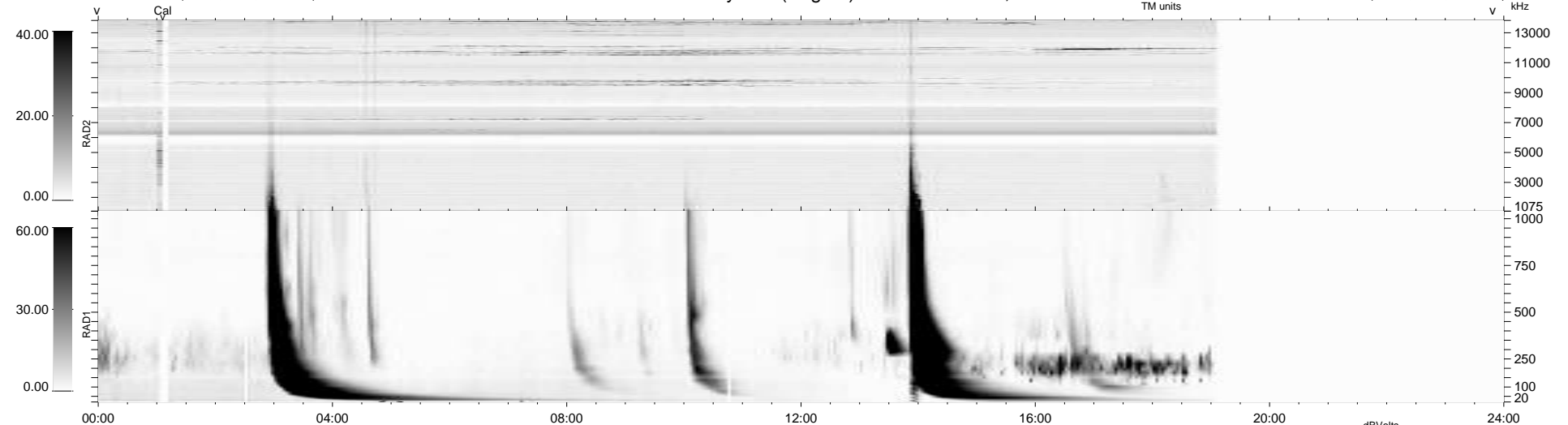
15 bad + 732 good MF/939MF projected (77%) - 192 missing MFs  
 Avg interval = 180 secs  
 Re = -254.17 (233.67, 99.87, 5.34 GSE)

windlib 2.0b

LZ version = v01

### WIND/WAVES Summary Plot (Page 1) for 25-JUN-2021, DOY = 176

DAILY 2021-06-26 22:20:43  
 Re = 254.88 (234.93, 98.69, 5.70 GSE)



```

RAD2
Antenna Ey .....
Mode LIN(1) .....
SUM/SEP SEP .....
Toggle OFF .....

RAD1
Antenna Ex .....
Mode LIS(2,4) .....
SUM/SEP SUM .....
Toggle OFF .....

TNR
Antenna ExEy .....
Mode A-32 .....
Sweep ACE .....
  
```