

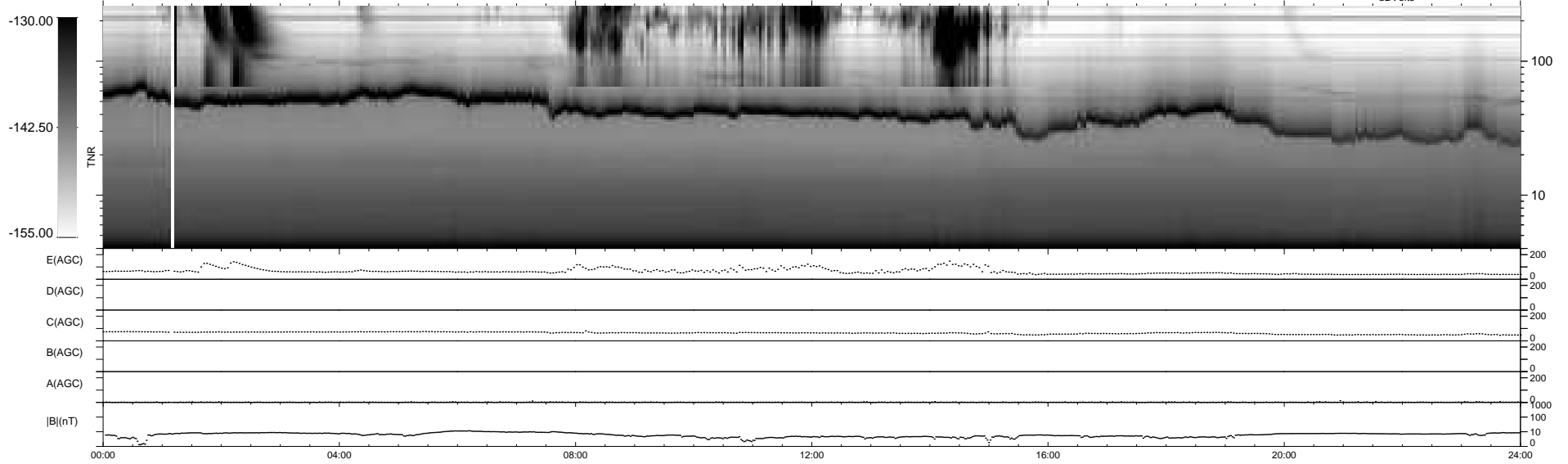
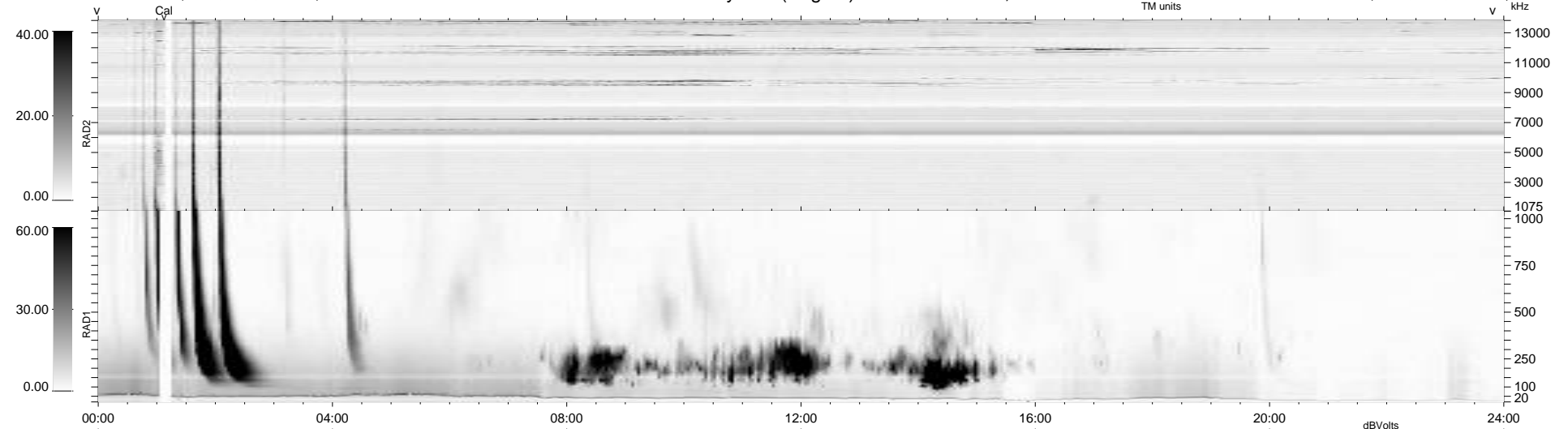
14 bad + 926 good MF/940MF projected (98%) - 0 missing MFs
 Avg interval = 180 secs
 Re = 229.85 (210.58, 92.05, -3.67 GSE)

windlib 2.0b

LZ version = v01

WIND/WAVES Summary Plot (Page 1) for 03-JUN-2021, DOY = 154

DAILY 2021-06-04 13:20:13
 Re = 231.36 (211.54, 93.64, -3.27 GSE)



RAD2
 Antenna Ey
 Mode LIN(1)
 SUM/SEP SEP
 Toggle OFF

RAD1
 Antenna Ex
 Mode LIS(2,4)
 SUM/SEP SUM
 Toggle OFF

TNR
 Antenna ExEy
 Mode A-32
 Sweep ACE