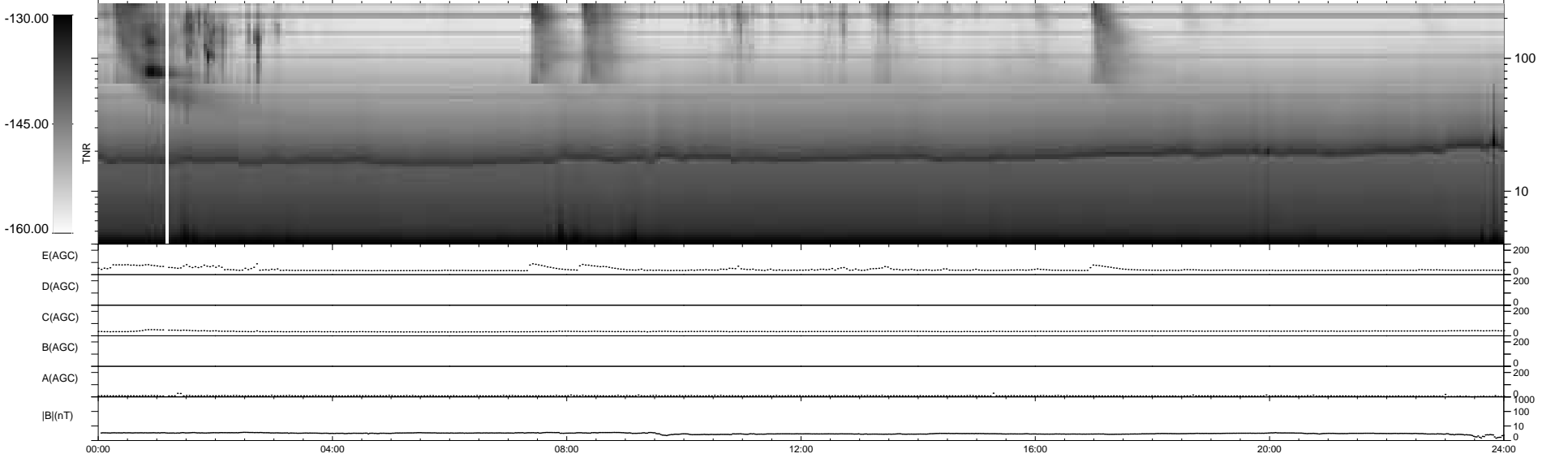
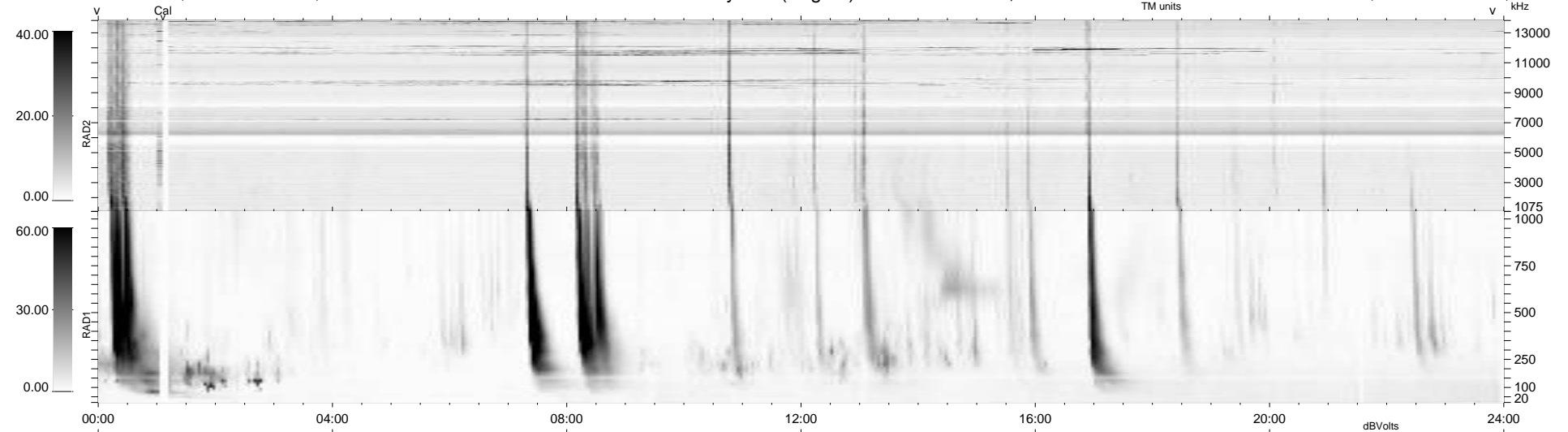


7 bad + 932 good MF/939MF projected (99%) - 0 missing MFs
 Avg interval = 180 secs
 Re = 215.81 (203.55, 71.34, -7.23 GSE)

windlib 2.0b LZ version = v01
 DAILY 2021-05-26 12:20:05
 Re = 217.03 (203.96, 73.83, -6.91 GSE)

WIND/WAVES Summary Plot (Page 1) for 24-MAY-2021, DOY = 144



```

RAD2
Antenna Ey .....
Mode LIN(1) .....
SUM/SEP SEP .....
Toggle OFF .....

RAD1
Antenna Ex .....
Mode LIS(2/4) .....
SUM/SEP SUM .....
Toggle OFF .....

TNR
Antenna ExEy .....
Mode A-32 .....
Sweep ACE .....
  
```