

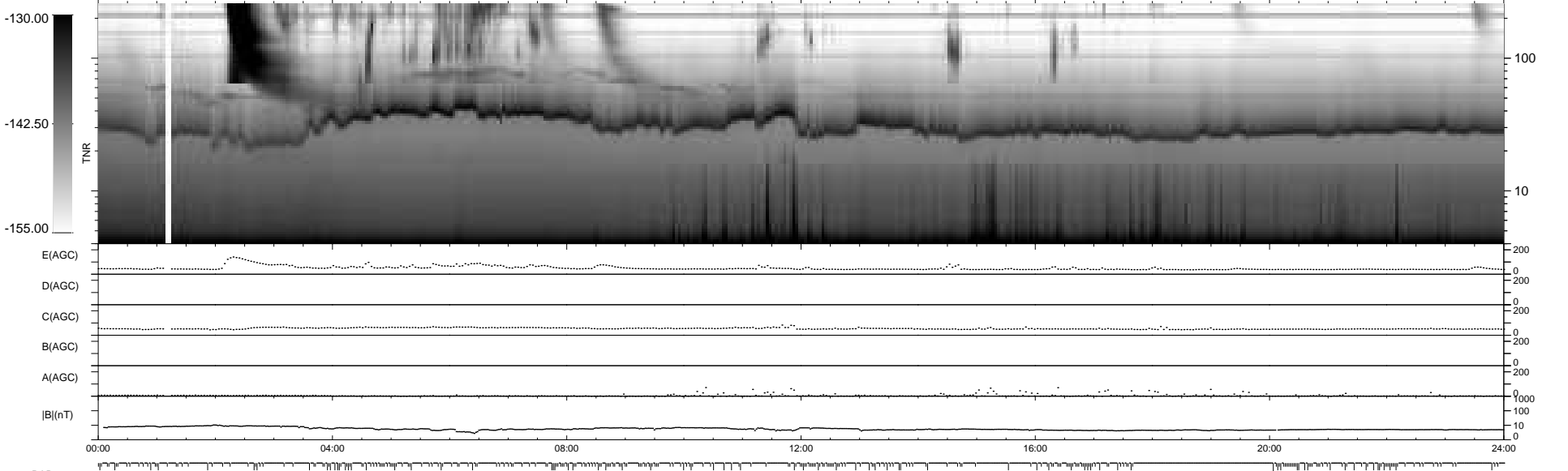
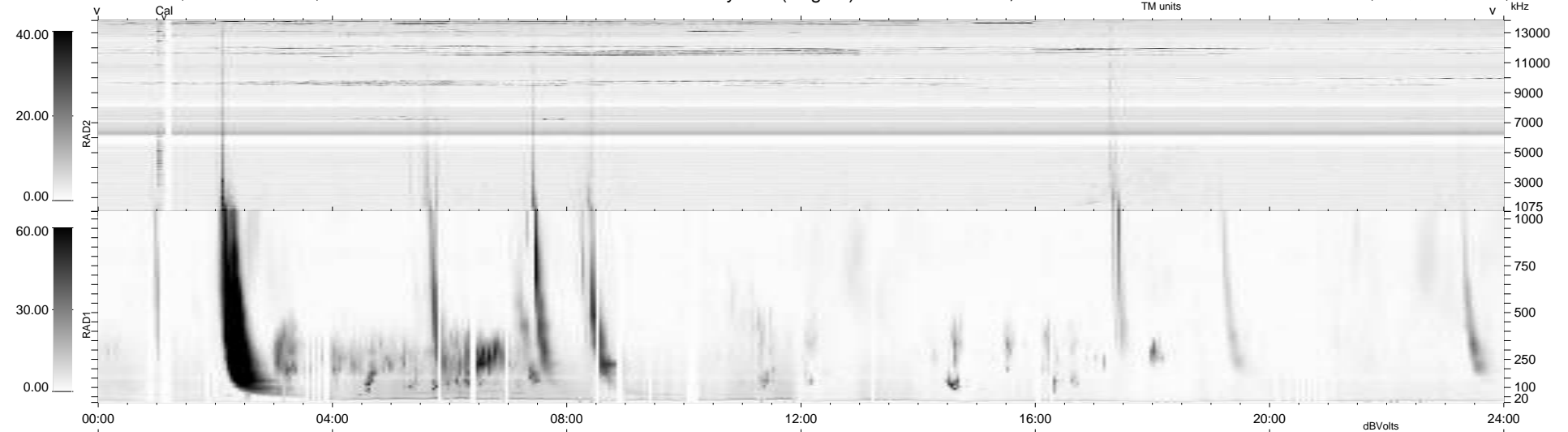
305 bad + 635 good MF/940MF projected (67%) - 0 missing MFs
Avg interval = 180 secs
Re = 209.29 (202.07, 53.77, -8.95 GSE)

windlib 2.0b

LZ version = v01

WIND/WAVES Summary Plot (Page 1) for 18-MAY-2021, DOY = 138

DAILY 2021-05-19 22:20:44
Re = 210.29 (202.24, 56.97, -8.69 GSE)



RAD2
Antenna Ey
Mode LIN(1)
SUM/SEP SEP
Toggle OFF

RAD1
Antenna Ex
Mode LIS(2,4)
SUM/SEP SUM
Toggle OFF

TNR
Antenna ExEy
Mode A-32
Sweep ACE