

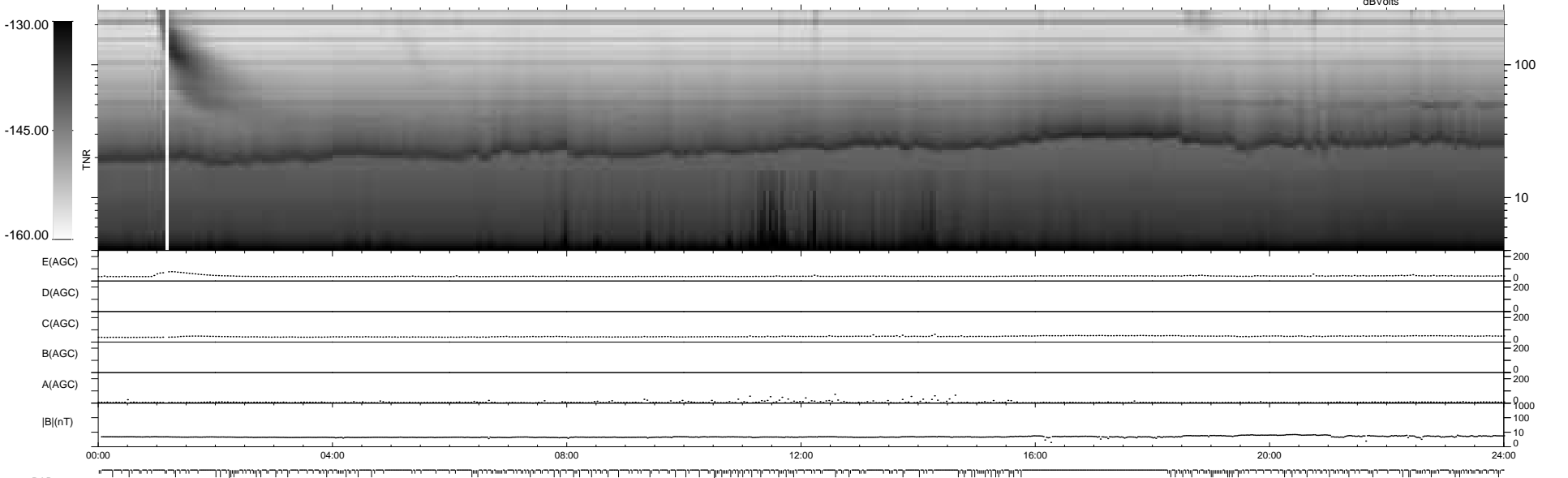
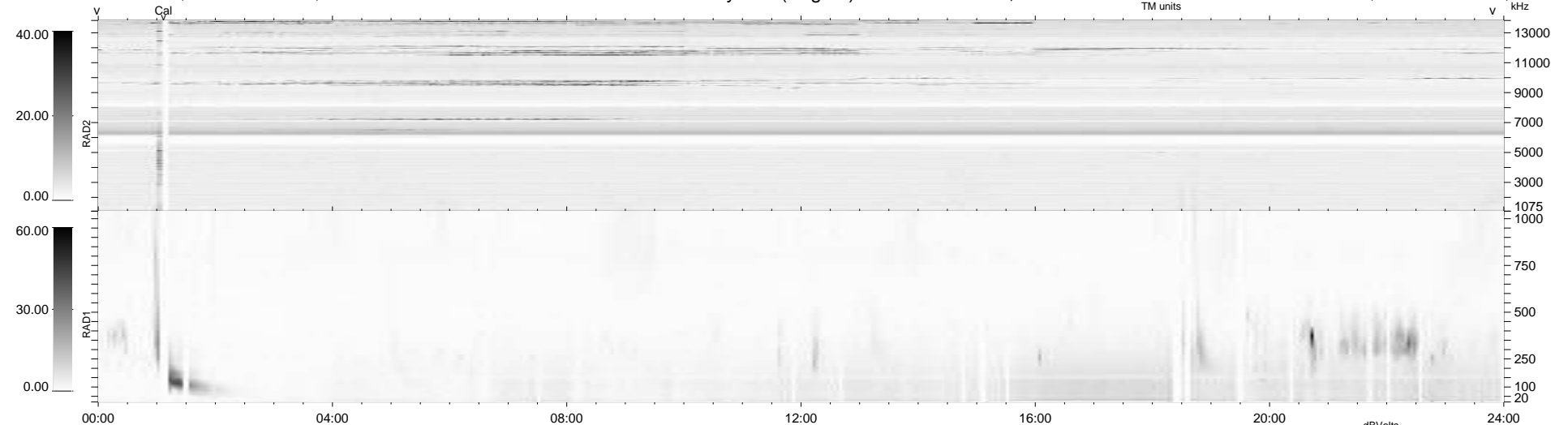
327 bad + 612 good MF/939MF projected (65%) - 0 missing MFs  
 Avg interval = 180 secs  
 Re = 205.62 (201.47, 39.89, -9.88 GSE)

windlib 2.0b

LZ version = v01

### WIND/WAVES Summary Plot (Page 1) for 14-MAY-2021, DOY = 134

DAILY 2021-05-15 22:21:18  
 Re = 206.48 (201.62, 43.47, -9.67 GSE)



```

RAD2
Antenna Ey .....
Mode LIN(1) .....
SUM/SEP SEP .....
Toggle OFF .....

RAD1
Antenna Ex .....
Mode LIS(2,4) .....
SUM/SEP SUM .....
Toggle OFF .....

TNR
Antenna ExEy .....
Mode A-32 .....
Sweep ACE .....
  
```