

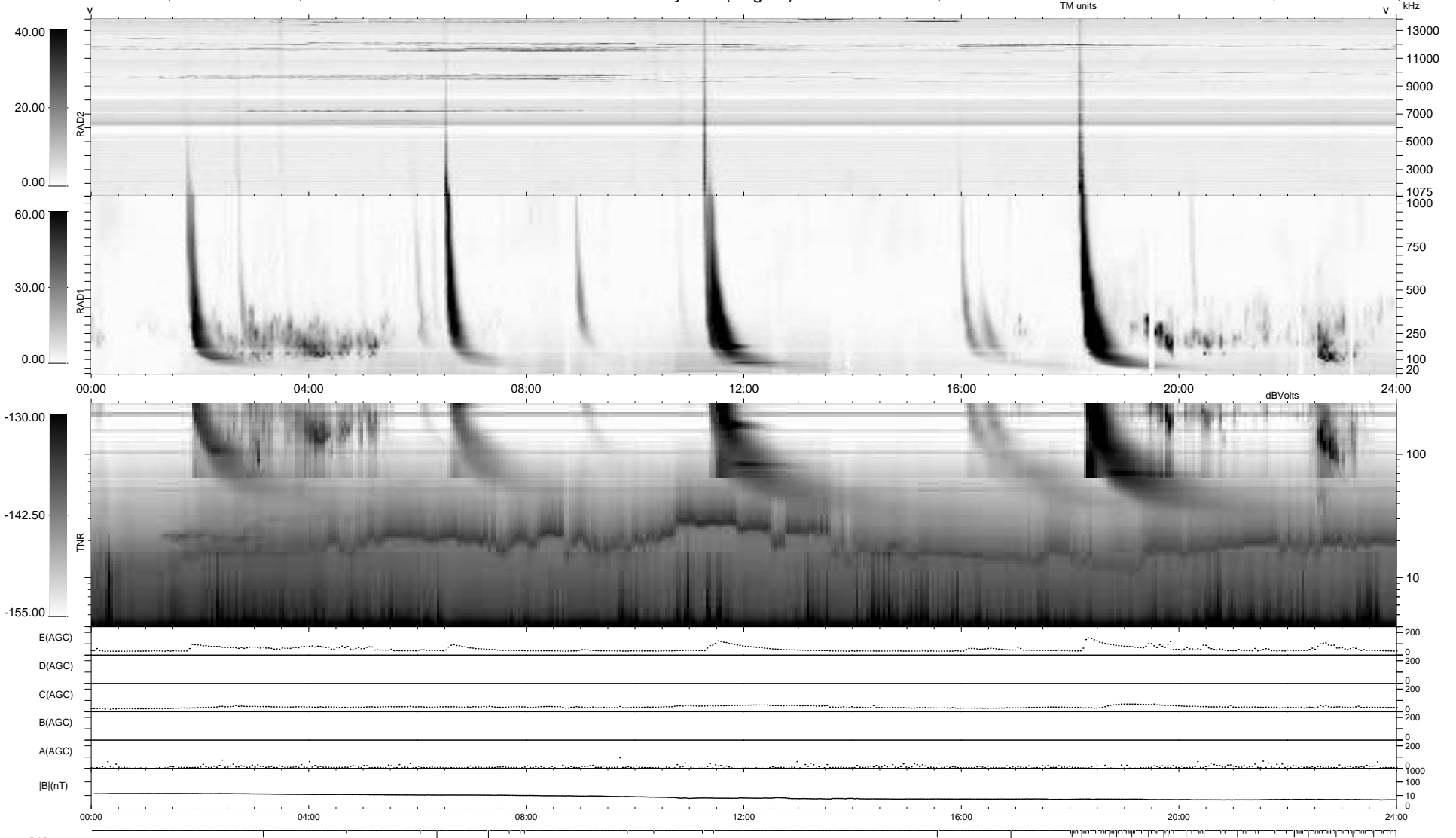
106 bad + 833 good MF/939MF projected (88%) - 0 missing MFs
 Avg interval = 180 secs
 Re = -204.79 (201.31, 36.22, -10.07 GSE)

windlib 2.0b

LZ version = v02

WIND/WAVES Summary Plot (Page 1) for 13-MAY-2021, DOY = 133

DAILY 2021-05-15 22:20:42
 Re = 205.61 (201.47, 39.87, -9.88 GSE)



RAD2
 Antenna Ey
 Mode LIN(1)
 SUM/SEP SEP
 Toggle OFF

RAD1
 Antenna Ex
 Mode LIS(2,4)
 SUM/SEP SUM
 Toggle OFF

TNR
 Antenna ExEy
 Mode A-32
 Sweep ACE