

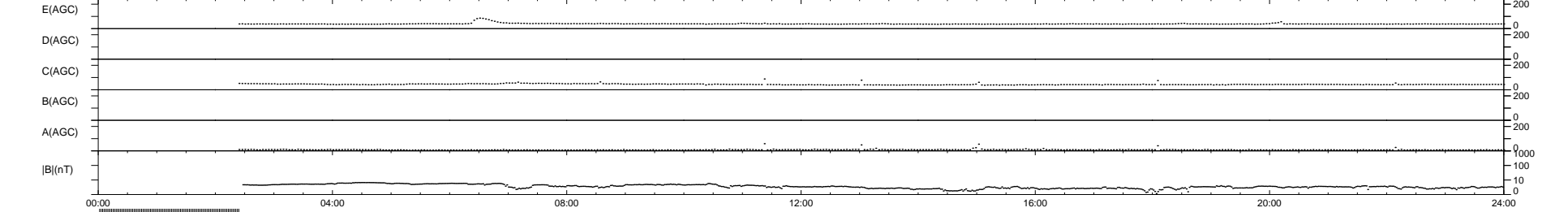
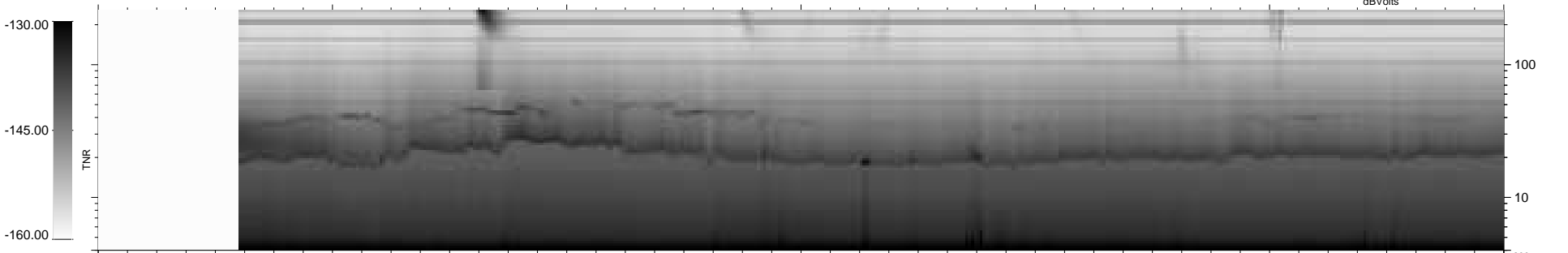
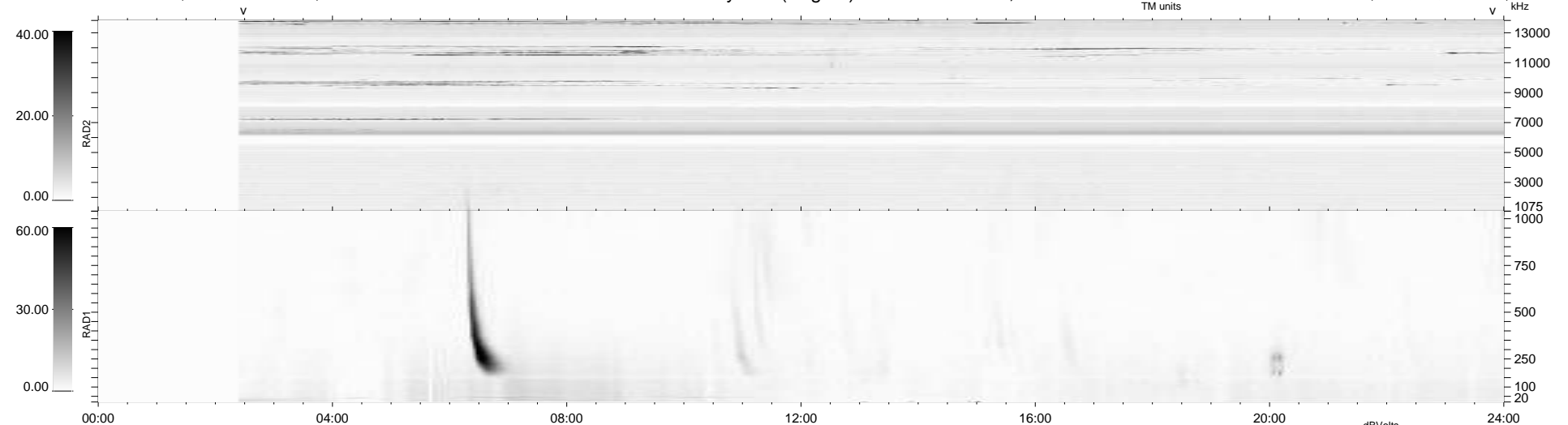
13 bad + 832 good MF/939MF projected (88%) - 94 missing MFs  
Avg interval = 180 secs  
Re = 199.75 (199.44, 2.08, -10.95 GSE)

windlib 2.0b

LZ version = v01

### WIND/WAVES Summary Plot (Page 1) for 04-MAY-2021, DOY = 124

DAILY 2021-05-05 13:20:05  
Re = 200.02 (199.64, 5.50, -10.94 GSE)



RAD2 Antenna Mode SUM/SEP Toggle  
RAD1 Antenna Mode SUM/SEP Toggle  
TNR Antenna Mode Sweep