

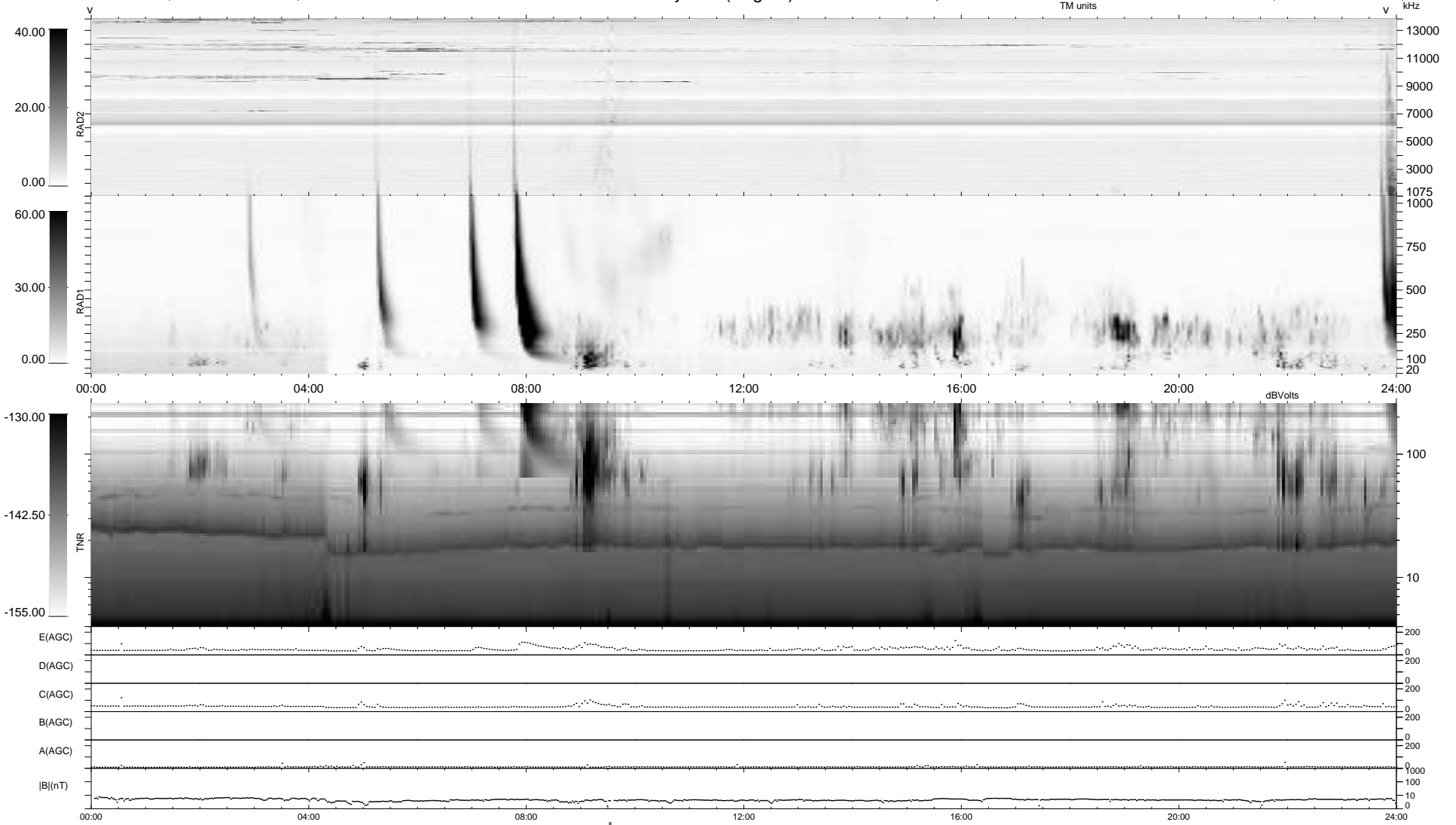
8 bad + 929 good MF/939MF projected (98%) - 2 missing MFs
 Avg interval = 180 secs
 Re = -207.05 (200.33, -51.55, -8.91 GSE)

windlib 2.0b

LZ version = v01

WIND/WAVES Summary Plot (Page 1) for 19-APR-2021, DOY = 109

DAILY 2021-04-20 17:20:05
 Re = 205.95 (200.00, -48.28, -9.15 GSE)



RAD2
 Antenna Ey
 Mode LIN(1)
 SUM/SEP SEP
 Toggle OFF
 RAD1
 Antenna Ex
 Mode LIS(2,4)
 SUM/SEP SUM
 Toggle OFF
 TNR
 Antenna ExEy
 Mode A-32
 Sweep ACE