

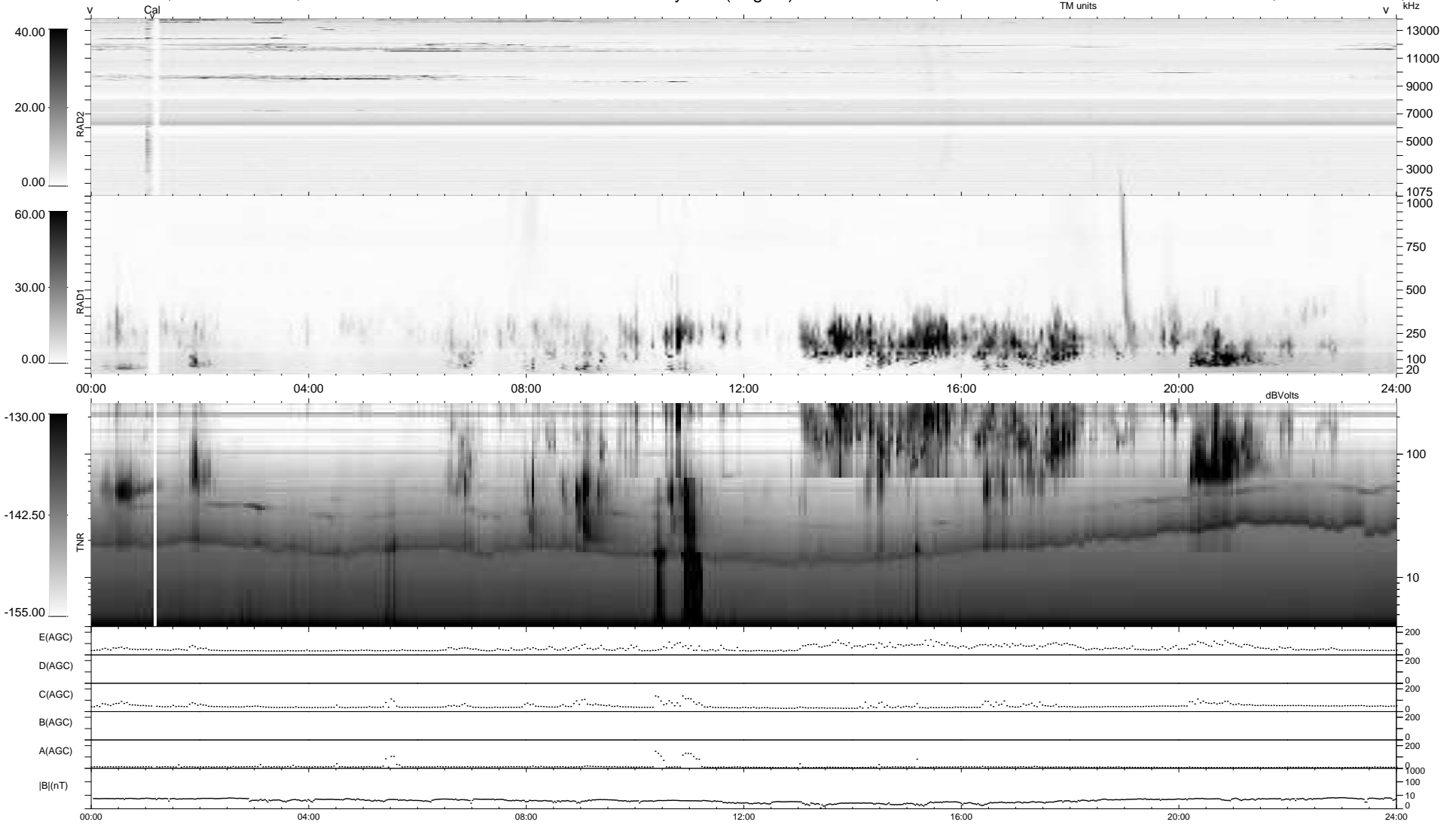
9 bad + 931 good MF/940MF projected (99%) - 0 missing MFs  
 Avg interval = 180 secs  
 Re = 208.22 (200.69, -54.81, -8.66 GSE)

windlib 2.0b

LZ version = v01

### WIND/WAVES Summary Plot (Page 1) for 18-APR-2021, DOY = 108

DAILY 2021-04-19 15:20:05  
 Re = 207.06 (200.34, -51.58, -8.91 GSE)



```

RAD2
Antenna Ey .....
Mode LIN(1) .....
SUM/SEP SEP .....
Toggle OFF .....

RAD1
Antenna Ex .....
Mode LIS(2,4) .....
SUM/SEP SUM .....
Toggle OFF .....

TNR
Antenna ExEy .....
Mode A-32 .....
Sweep ACE .....
  
```