

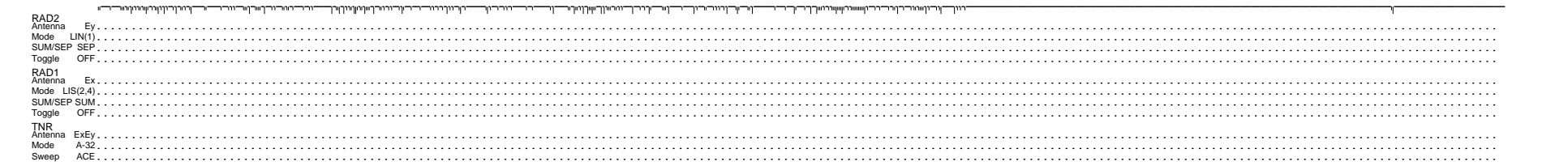
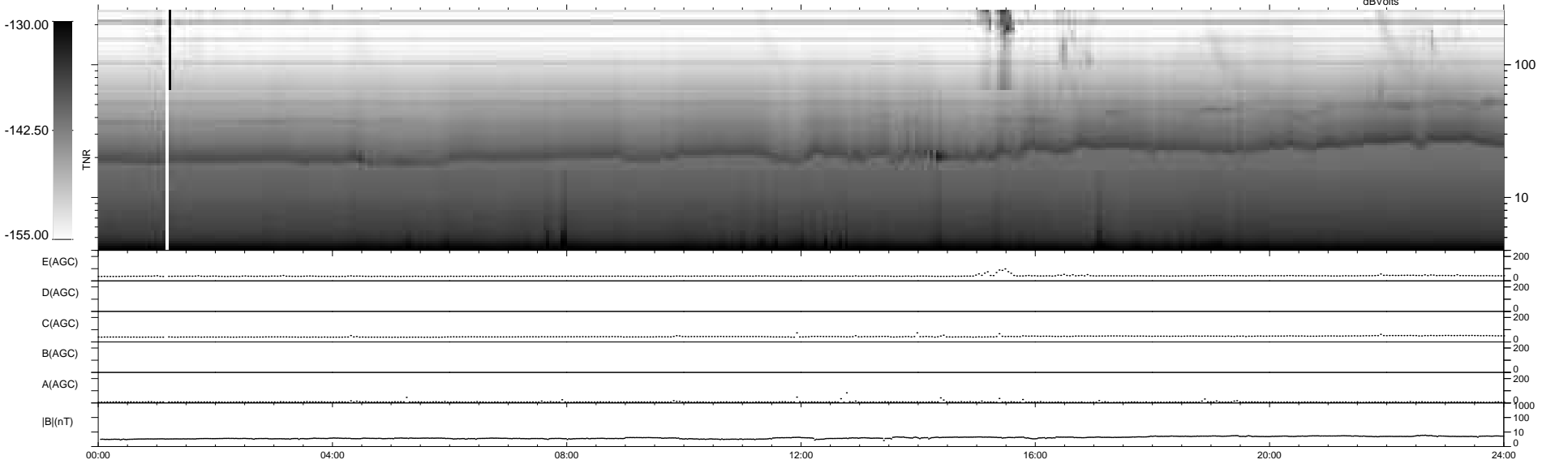
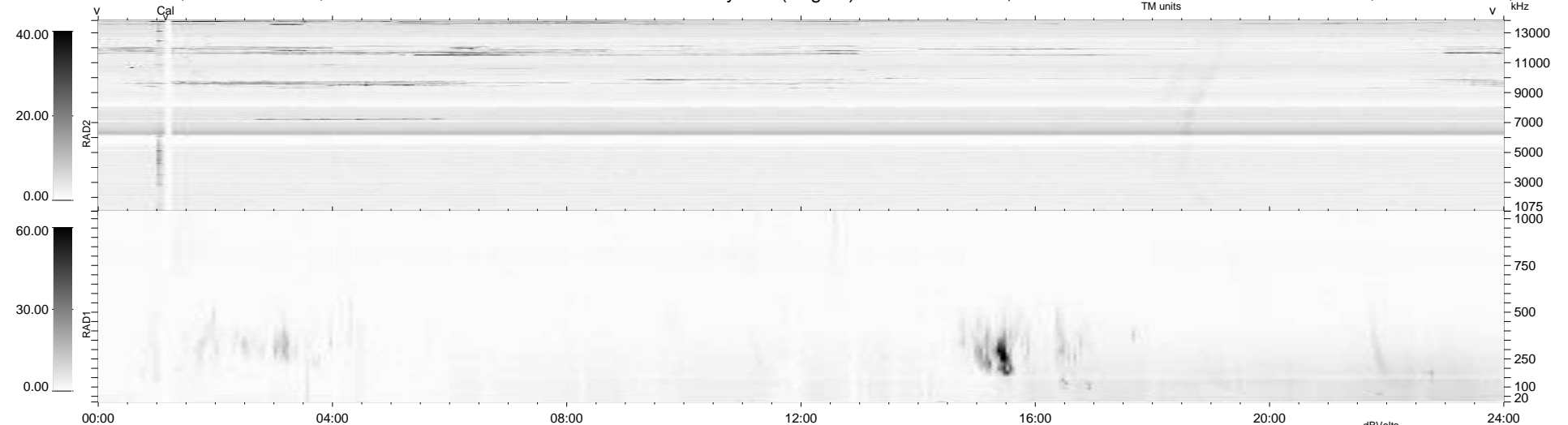
210 bad + 730 good MF/940MF projected (77%) - 0 missing MFs
 Avg interval = 180 secs
 Re = 218.41 (203.84, -78.21, -6.21 GSE)

windlib 2.0b

LZ version = v01

WIND/WAVES Summary Plot (Page 1) for 10-APR-2021, DOY = 100

DAILY 2021-04-11 21:20:04
 Re = 217.13 (203.43, -75.63, -6.56 GSE)



```

RAD2
Antenna Ey .....
Mode LIN(1) .....
SUM/SEP SEP .....
Toggle OFF .....

RAD1
Antenna Ex .....
Mode LIS(2,4) .....
SUM/SEP SUM .....
Toggle OFF .....

TNR
Antenna ExEy .....
Mode A-32 .....
Sweep ACE .....
  
```