

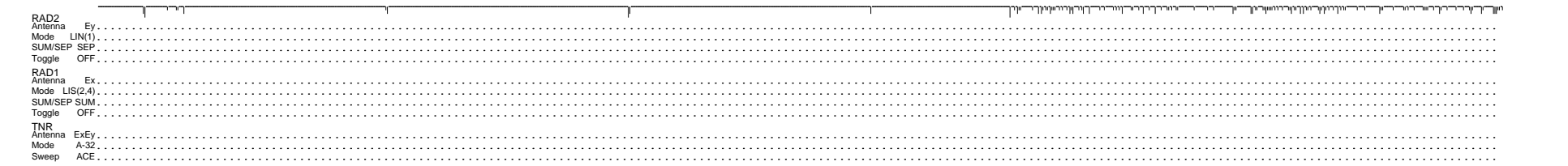
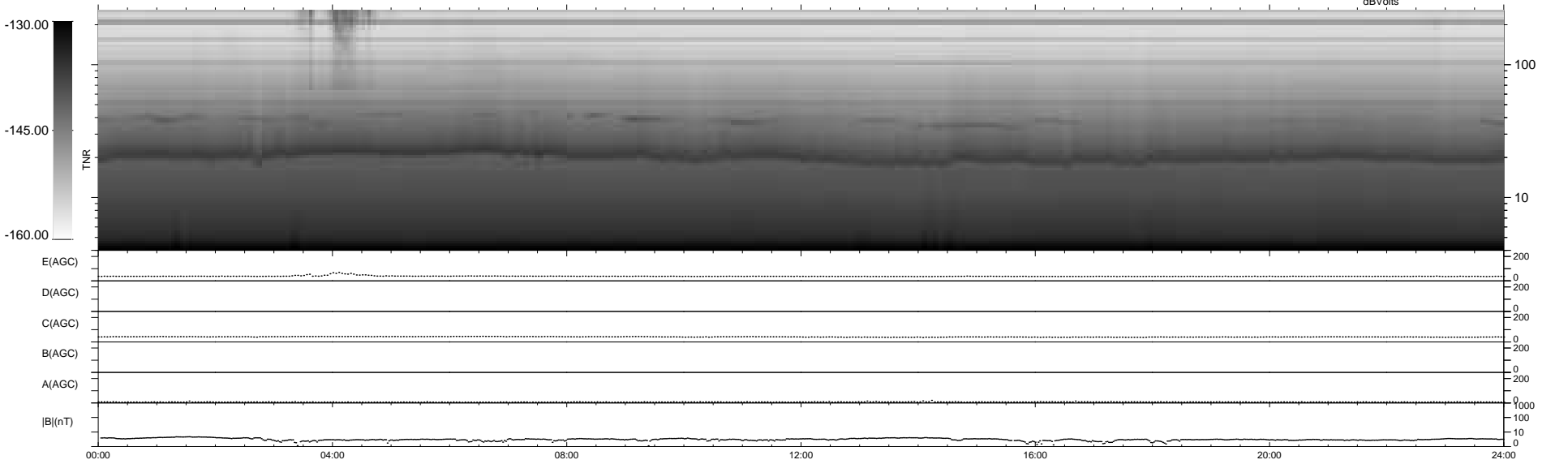
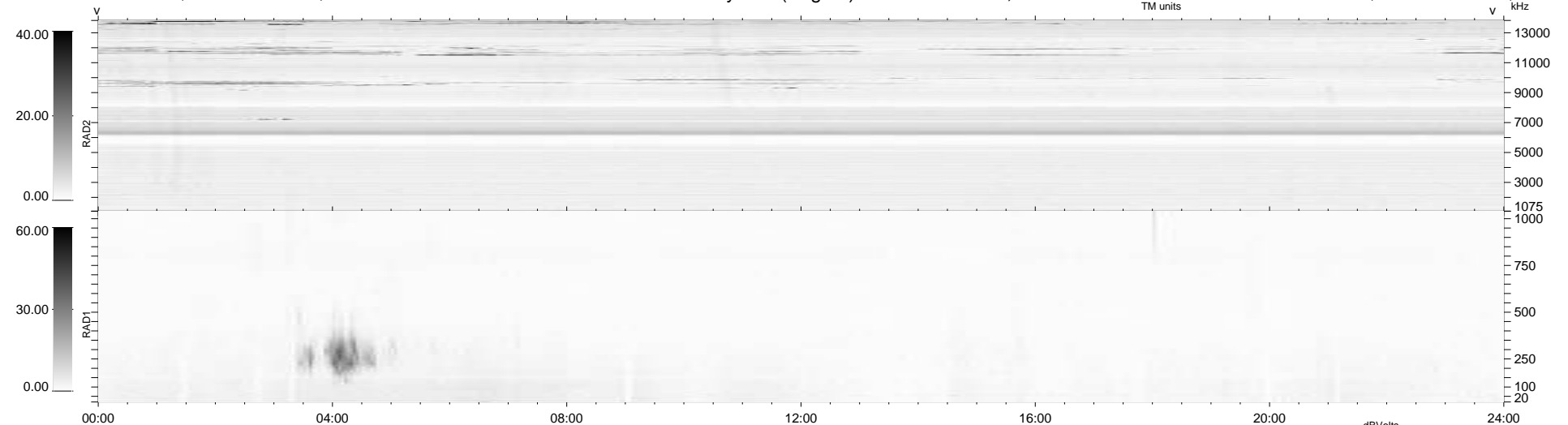
126 bad + 813 good MF/939MF projected (86%) - 0 missing MFs
 Avg interval = 180 secs
 Re = 219.69 (204.25, -80.68, -5.85 GSE)

windlib 2.0b

LZ version = v01

WIND/WAVES Summary Plot (Page 1) for 09-APR-2021, DOY = 99

DAILY 2021-04-10 23:20:42
 Re = 218.42 (203.84, -78.23, -6.21 GSE)



```

RAD2
Antenna Ey .....
Mode LIN(1) .....
SUM/SEP SEP .....
Toggle OFF .....

RAD1
Antenna Ex .....
Mode LIS(2,4) .....
SUM/SEP SUM .....
Toggle OFF .....

TNR
Antenna ExEy .....
Mode A-32 .....
Sweep ACE .....
  
```